



# LSC

NEWSLETTER

**LSC**



**AUSTRALIA'S MOST TRUSTED NAME IN COMMERCIAL PADLOCKS  
NEW SALCA UNOCODE F-SERIES MACHINERY PLATFORM**

February 2021 | Issue 451

**THIS MONTH:  
SMALL BUSINESS LOVES SALTO KS**



Security Tech Germany

LOVE IT?  
LOCK IT

PRECISION  
GERMAN  
ENGINEERING

# NEW LOCK FOR EXTREME SECURITY REQUIREMENTS



Special alloy hardened steel shackle with Nano-Protect™

Chrome plated hardened steel body

## ABUS Rekeyable Monoblock 93/100 93100KD

Australia's most trusted commercial padlock has a new addition to the range. Introducing the ABUS Rekeyable Monoblock 93/100 "A lock for extreme security requirements"

ABUS Monoblock padlocks offer high security with a heavy duty traditional block style profile. Secure high valued items, with a 15mm hardened shackle & hardened steel body. The latest addition from ABUS is a serious solid product, yet simple for everyday use. Designed for maximum security for commercial and industrial applications.

- Incorporates the popular 570 6 pin style barrel
- Compatible with most restricted keying systems
- Removable cylinder assembly for quick rekeying
- Key retaining
- 15 mm shackle diameter
- Drill and pull resistance
- Corrosion resistant internal components
- Hardened anti-drill plate protects the cylinder
- Keyed to differ
- Silca LW4 keyway
- Supplied boxed

*Talk to your Account Manger now!*



locking for life



## BACK TO WORK WITH BRAVA



**Entrance Leverset  
Metro Series**

EU6000SC70



**Double Cylinder Deadbolt  
Urban Series**

D362B



**Euro Double Cylinder  
Urban Series**

31705PHESCKD



**Cupboard Door Lock  
OL Series**

BR700LCASC



Visit the LSC website for the complete range of BRAVA Urban, Metro and OL series range.



## BACK TO BASICS

Whether you need Keypads only, Standard BORG locks, ECP, Gate locks, Knob, Levers, Key Override, Back to Back, Cam locks or adaptor plates, LSC has Australia's largest range of mechanical code locks & components to cover your requirements.



**Digital Lock  
2000 Series**

BL2000SC



**Digital Lock  
5051 Marine Pro Series**

BL5051MGPRO



**Digital Cam Lock  
1706 Series**

BL1706SCECPKD



**Digital Lock  
5701 Series**

BL5701SCECP



Visit the LSC website for the complete range of BORG Locks & accessories or talk to your Account Manager today.



## Small Business loves SALTO KS – just ask The Wool Mill Centre

Servicing the access control needs of your SME customers means minimizing risks, without the high costs associated with implementation, management or maintenance. They demand simplicity, ease of use, and internet-based management.

Enter SALTO KS. Easy to install, your customers can manage cloud-based access control from anywhere, on-the-go, simply by using the KS app or a web browser. They can send a mobile key to anyone with a smartphone, with no need to hand over tags or even do a remote opening (though you can do that too!). Issuing and receiving access has never been easier.

“

**Once we saw the product, we knew it was perfect for us. SALTO have a wireless lock option, which instantly did away with our cabling issue. The XS4 Mini locks are well designed, and are a great aesthetic fit with our internal building style**

- John Kallitsas  
Managing Director  
The Wool Mill Centre

”

Being cloud-based, there’s no need to purchase software licenses, install and manage complicated and expensive IT equipment, or worry about ongoing maintenance and back-ups. Instead, customers unlock the functionality of their account with a one year KS subscription - so you earn while you sleep each time they renew.

And customers, such as The Wool Mill Centre, love it. Formerly a working mill, John Kallitsas, Managing Director, refurbished it into a state of the art co-working space.

“Once we saw the product, we knew it was perfect for us,” says John. “SALTO have a wireless lock option, which instantly did away with our cabling issue. The XS4 Mini locks are well designed, and are a great aesthetic fit with our internal building style.”

Tenants access the building and their dedicated offices with a key card or using their mobile phone as a credential. For visitors, the front main entry door has an intercom connected to individual rooms, and tenants can let their guests in using the SALTO KS app on their phone.

The installation was managed smoothly by SALTO partner JTW Security. James West, Director, agrees that SALTO was the perfect fit for this project: “With a refurbishment of an old building like this, a wireless solution is essential”, he said. “Running cables would have been almost impossible, not to mention expensive.”

### SALTO AND LSC

To get started with SALTO KS, LSC can help you with pre-sales support to system implementation – just ask.



# PRODUCT SPOTLIGHT

## NETWORK 4 DOOR CONTROLLER



The CS EVO4 Network 4 door controller can connect back via RS485 or TCP/Ethernet to CS Technologies powerful management software, Evolution. This user-friendly system management tool is available for FREE and supports a wide host of advanced features such as door, lift and alarm control (with 4 state monitored expansion boards).

- Expansion boards available to expand input and relay capacity.
- Free Evolution Management software
- Remote web interface, floor plans and CCTV integration.
- Dual path back to base alarm signal support with optional TCD adapter



CSEVO4



## NEW AIR4 V64 - SELF-CLONING REMOTE



LSC are now stocking the latest revision to Silca's popular and easy to use self-cloning remote: The Air4 V64.

This fifth revision to the range increases transmission distance, simplifies the copying process and supports AM/FM, multi-frequency fixed code or rolling code remote emulation for hundreds of original remotes.

Available in a range of 5 fashionable colours, each of the four buttons can be individually configured, allowing you to consolidate and personalise a range of remotes.



## 3950 HORIZON DIGITAL CAM LOCK



Introducing Horizon by Lock Focus. A slimline, small footprint lock with capacitive touch keypad and an ultra-modern look and feel. Designed for use on lockers, cabinets, delivery boxes and general enclosures, it is easy to install and simple to operate. The lock has an impressive range of advanced features including: remote management of lock codes, audit trail and a cloud based configuration portal.

LF3950HORBLK



*Lock Focus catalogue out now!*



**FREE DELIVERY!\*** for all orders over \$150 \*Exclusions apply.



# GET TO know US

VIC Sales Team



## BRAD



- 23 years in the industry.
- First job in security industry was store person with LSC SA back in 1997.
- Favourite products are Silca electronic key machinery and Salto product range.
- Passionate about the growth of Electronic Security within the industry.
- On the weekend you'll find me spending time with my family. My two boys (5 & 2 years old) keep me pretty busy these days

## PAUL



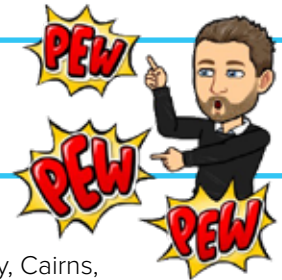
- 20 years in the industry.
- First job in the security industry was apprentice for Integrity Locksmiths in Sydney.
- Favourite product range is Salto and Salto KS.
- Passionate about seeing customers take on new product ranges and challenges.
- On the weekend you'll find me cooking up a storm on my smoker or chasing after my two lunatic girls at the park.

## ANDREW



- 30 years in the industry.
- First job in the hardware industry was for a business called Chas French and Son - Wangaratta.
- Favourite product range is the Silca key cutting equipment from mechanical to electronic. The quality and innovation is world leading and lasts a generation.
- Passionate about seeing customers be willing to embrace new products or progress into new segments such as electronic security.
- On the weekend you'll find me either at Bunnings, daughters netball, camping, a winery around the magnificent North East, Melbourne with friends or family, or on a flight.

## JOSH



- 8 years in the industry.
- First job was at TCL Security, Cairns, Far North Queensland in the commercial division.
- Favourite product range is ABUS.
- Passionate about continual adaptation and innovation within the industry. Constant evolution of products.
- On the weekend you'll find me up late watching EPL or out exploring the great state of VIC, usually with my dog.

## KARL



- 7 years in the industry.
- First job was working weekends at a local Home Hardware & Timber in Wodonga during high school.
- Favourite product range is CCTV.
- Passionate about coming up with the right solution the first time.
- On the weekend you'll find me brewing beer, or camping / 4x4ing.

## PETA



- 33 years in the industry.
- First job was a locksmith apprenticeship in Victoria.
- Favourite product range is Silca; top quality, reliable machines and wide range of key blanks.
- Passionate about staying up to date with the latest products needed in the locksmith industry.
- On the weekend you'll find me cruising or working on my 1970 Ford Capri.

# VIC TEAM

**NEW** NEW ADDITIONS TO OEM AND AFTERMARKET OFFERING



**Silca Shell 3B KIA8**  
SKIA8BRS8

3 button flip key shell  
Suit various Hyundai & Kia  
KIA8 blade included



**Silca Shell 3B Smart**  
SKIA8ARS8

3 button smart key shell  
Emergency blade included  
Suit various Kia models



**Silca Shell 2B HU136**  
SHU136RS2

2 button key shell  
Suit various Renault  
HU136 blade included



**Silca Shell 3B HU136**  
SHU136RS8

3 button key shell  
Suit various Renault  
HU136 blade included

*supplied in  
original  
manufacturing  
packaging*



**Suzuki OEM 2B Remote Key**  
SZ3714562R11

Frequency 433  
49-IC transponder  
Suit Swift 2018+ and Ignis 2014+  
HU133R profile  
Programmable with Smart Pro or similar



*Mode 80  
Bit*



**BDS Subaru 3B Proximity Key**  
5341177257

Frequency 433  
Transponder TMS37126  
Suit various Subaru  
Configuration F1  
Emergency blade included  
No logo

## TRAINING SURVEY REMINDER

We're always striving to provide great automotive training through our TechEd courses. With the introduction of online delivery, and more courses planned for 2021, some customers have been asked to participate in a survey to help us optimise our offering.

**This very brief survey will only take about 5 minutes to complete. By sharing your thoughts with us you could win a \$250 VISA gift card!**

*get a chance to win a \$250 VISA gift card!*



# NEW SILCA UNOCODE F-SERIES



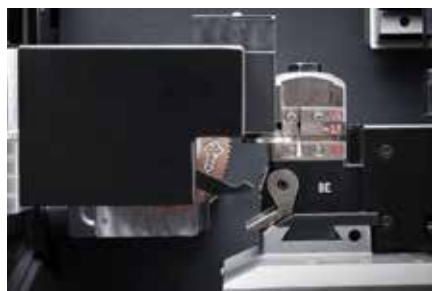
**When Silca launched the first quality electronic code machine in 1988, it revolutionised the industry. The Unocode quickly became the machine of choice and was recognised as the industry standard for performance, reliability and ease of use.**

**Revised and updated in 1999, 2002, 2008 and most recently in 2016, now it's time for a completely new Unocode: F-Series.**

New from the ground up, no single component escaped revision and upgrading. A dedicated team of 50 engineers invested more than 30,000 hours in the new machine. Hundreds of new drawings were made, parts designed, tested, revised and tested again over four years - and the result has arrived: Unocode F-Series. Available in a variety of models, the machine is designed to perform to the very highest standards and appeal to the most professional locksmiths. Automate, speed and simplify your operation in one hit.



Camera decoder



Robot loader



Feeder



# SILCA MACHINERY PLATFORM

The machine includes on board software and codes for completely stand-alone use, and advanced functions can be achieved by pairing it with a PC via Ethernet or Wifi. New and innovative features include optional rotary engraving on both sides of the key, an optional electromechanical automatic feeder and FIFO sorter, and an optional high-resolution camera for fast decoding. Cutters, clamps, carriages, electronics, the

chassis and shield are all upgraded and feature the latest technology to reduce noise and vibration while improving speed and performance.

All functions are controlled from an integrated industrial touch-screen (the same one found on the SmartPro).

**A range of models is available to suit every business:**

Description	Camera Decoder	Engraving	Feeder
Silca Key Machine Unocode F-Series F100	No	No	No
Silca Key Machine Unocode F-Series F400	Yes	No	Optional
Silca Key Machine Unocode F-Series F600	Yes	Yes	Optional
Silca Key Machine Unocode F-Series F800	No	Yes	Yes
Silca Key Machine Unocode F-Series F900	Yes	Yes	Yes

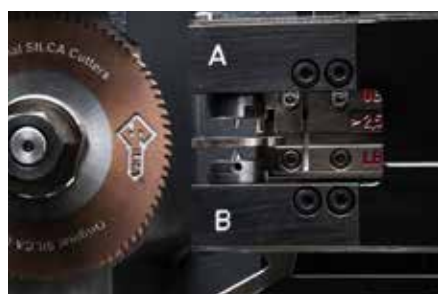
The F100 replaces the Unocode 299, and is the entry-level machine for cutting inline automotive, residential and restricted keys to code.

The F400 adds the digital camera for decoding, and can be considered an upgraded version of the Unocode 399. This machine can have the Feeder & FIFO sorter added later if required.

The F600 adds automatic rotary engraving on both sides of the key, the Feeder & FIFO sorter can be added later if required.

The F800 includes engraving and the automatic feeder and FIFO sorter, but removes the digital camera for decoding – this is the machine to use if you want to automate and streamline your MK production. You can load up keys for cutting and engraving, and walk away while the machine does the complete job, fully automatically, and the keys will be neatly stacked – cut AND engraved at the end of the job.

The F900 is the top model and included all available features.



Double sided engraving



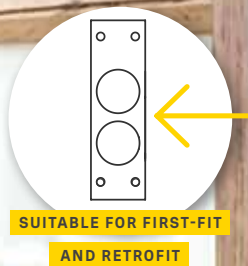
Industrial Touchscreen



Automatic shield



**FREE DELIVERY!\*** for all orders over \$150 \*Exclusions apply.

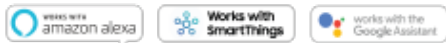


Build a smart home with a smart lock

**NEW**

The Yale Unity Entrance Lock can now be controlled through the use of the Yale Access App, providing total control over the lock anywhere, anytime\*. Lock and unlock the door, grant access to others and keep track of visitor access all via a mobile device.

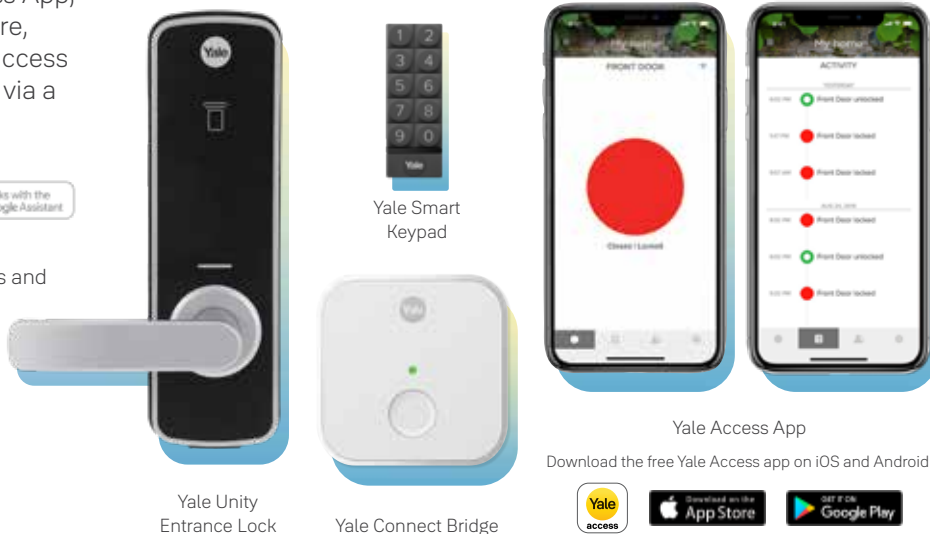
**Works with**



\*The Yale Connect Bridge is required for remote access and voice assistant compatibility.

**Part codes:**

- YURDEL1SIL** Yale Unity Entrance Lock Silver
- YURDELBDSIL** Yale Unity Entrance Lock Silver with Connect Bridge
- YURDELKPSIL** Yale Unity Entrance Lock Silver with Smart Keypad
- YURDELKITSIL** Yale Unity Entrance Lock Silver with Connect Bridge and Keypad



Yale Unity Entrance Lock

Yale Connect Bridge

Yale Access App

Download the free Yale Access app on iOS and Android.



**Disclaimer:** Other products' brand names may be trademarks or registered trademarks of their respective owners and are mentioned for reference purposes only.

[yalehome.com.au](http://yalehome.com.au)

Part of ASSA ABLOY

**NEW**

## SILCA KEY BLANKS

With 1000's of Silca keys in our range, you'll find what you need. We're always adding to the range as well, and here are some new keys added in 2020. Log onto [www.lsc.com.au](http://www.lsc.com.au) to order.

**SDRC2R**

Silca key blank DRC 2R  
Suits Doric cylinders

**SELS1**

Silca key blank ELS 1  
Suits cash boxes, small cam locks

**SHON81FP**

Silca key blank HON 81FP  
Suits Honda motorbikes

**SHU162AT**

Silca key blade HU 162AT  
Suits various VW group vehicles

**SHU162ATE**

Silca key blank HU 162ATE  
trans empty L/chip  
Suits various VW group vehicles

**SHU162TE**

Silca key blank HU 162TE  
trans empty L/chip  
Suits various VW group vehicles

**SKIA10TE**

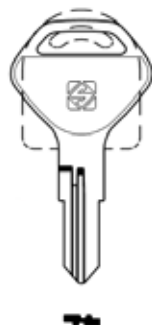
Silca key blank KIA 10 TE  
trans empty L/chip  
Suits Hyundai Kona and others

**SKW18RDP**

Silca key blank KW 18RDP  
Suits Kawasaki motorbikes

**SMER43R**

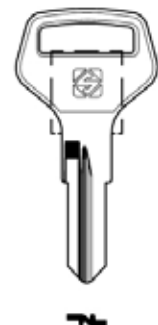
Silca key blank MER 43R  
Suits Meroni cam locks

**SMER44R**

Silca key blank MER 44R  
Suits Meroni cam locks

**SSSF1R**

Silca key blank SSF 1R  
Suits sentry safes

**SWTA1R**

Silca key blank WTA 1R  
Suits WT cam locks



Visit [lsc.com.au](http://lsc.com.au) for our comprehensive range of Silca keys.



**CLICK&COLLECT** Free pick-up from our branches



# KNOCKING AT THE DOOR OF AI ERA

Seeing and Understanding



COMING SOON

## AI POWERED INTELLIGENT MONITORING

Step into the AI era with the new Milesight AI Camera Series. Powered by an integrated AI chip, these cameras are capable of recognising a vast array of attributes to help identify and distinguish humans, vehicles, and objects. Precise detection and classification of objects in a surveillance footage helps to reduce the chance of false alarm.

### NEW GENERATION VIDEO ANALYTICS

Milesight's new generation video analytics features higher accuracy thanks to pre-trained deep learning AI and continuously refining algorithms.

### VCA EVENT

Intelligently filter objects to focus on human and vehicle detection in multiple events such as Region Entrance, Region Exiting and Loitering, Advanced Motion Detection and more.

### PEOPLE COUNTING

Real-time people counting powered by AI for high accuracy.

### FACIAL RECOGNITION

Detect human faces and captures snapshots to enhance monitoring efficiency.



DKM5BLEMB [Black finish]

dormakaba



2 HOUR  
FIRE RATED

BLUETOOTH

TOUCH  
KEYPAD

BATTERY  
POWERED



## A NEW ERA IN SMART, MODERN SECURITY

Change the way you think about home security and upgrade to a dormakaba digital door lock with the new M Series BLE smart locks. Allowing you to unlock your door with a PIN, an RFID Card/Fob, a key or a Smart phone via Bluetooth.

Designed with elegance, matched with the convenience of the smart features and functions whilst not compromising on security, reliability and performance. Give your customers the ultimate control of their home security.

Also Available:

DKM5BLENIB  
[Nickel Black Finish (Silver Trim)]

**NEW**

## LATEST FROM CS TECHNOLOGIES

The CS9001 5AMP Power Supply with Relay Alarm module is the latest product from CS Technologies. The power supply provides 2 onboard outputs for AC failure and low battery voltage monitoring. These outputs can be wired directly into the Power Alarm inputs on the CSEVO2 and CSEVO4 Access Control panels giving alarm reporting through the Evolution Software.

It is supplied in a lockable metal enclosure with room to house a 12V 7AH battery to provide backup when required.

*Inside of  
power supply*



Part code: CS9001



**Neptune**  
Security Products

**NEW**

## NEW NEPTUNE MODULES TO SUIT NEPSDC5A01B



### NEPSM4OUT

The Neptune 4 Output Module has 4 x 1A individually fused terminals. The module is used with the NEPSDC5A01B power supply and is easily fitted to the threaded holes on the main power supply casing using the supplied standoffs and screws. The module comes with a 2-year warranty.



### NEPSM8OUT

The Neptune 8 Output Module has 8 x 500mA individually fused terminals. The module is used with the NEPSDC5A01B power supply and is easily fitted to the threaded holes on the main power supply casing using the supplied standoffs and screws. The module comes with a 2-year warranty.



### NEPSMAC

The Neptune Access Control Module is designed to use as a simple access control setup. It features a REX input, Switch Signal Trigger, NO/NC 12V Output, 12V Output, 0-10 sec Time Delay setting. The module is used with the NEPSDC5A01B power supply and is easily fitted to the threaded holes on the main power supply casing using the supplied standoffs and screws. The module comes with a 2-year warranty.



**FREE DELIVERY!\*** for all orders over \$150 \*Exclusions apply.

**LSC** 13



Security Tech Germany



locking for life



ASSA ABLOY



AVAILABLE NOW

## DESIGNED AND ENGINEERED FOR OPTIMAL PERFORMANCE



**DKSB2212SSS**  
Primary Narrow Stile Lock 23mm SSS



**DKSB2312SSS**  
Primary Narrow Stile Lock 30mm SSS

## SB2200 & SB2300 Series Narrow Stile Mortice Locks

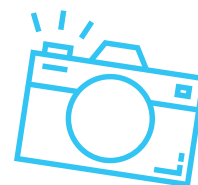
These premium performance locksets and latchsets are built with a zinc die cast chassis and stainless steel face plate. With a wide variety of lock functions, the dormakaba SB2200 and SB2300 series narrow stile mortice locks will have the right function to meet your hardware specification requirements.

**Recommended applications:**

- Retail Complexes
- Offices
- Shop Front Entrances
- Municipal Buildings
- Residential
- School
- Hospitals
- Hotels



# HAPPY CUSTOMERS



## NORTH WEST LOCKSMITHS (NSW)



Steve, owner of North West Locksmiths proudly posing with his new Silca Triax Pro.

## BURLEIGH MULTI SERVICES (QLD)



John Coom from Burleigh Multi Services with his new Silca Bravo Professional.

## PENINSULA LOCK & KEY (QLD)



Rhys from Peninsula Lock & Key with their new Advanced Diagnostics SMART Pro.

## LOCKTEC LOCKSMITHS (VIC)



Jay of Locktec locksmiths with his new Silca Futura Pro.

## GLOBAL INTERGRATED SECURITY (QLD)



Murray Jones from Global Intergrated security with some of the best equipment available – Silca Futura Pro, Bravo Pro 2 and RW4Plus.

## ORB LOCK COMPANY (VIC)



Duncan from Orb Lock Company is all smiles after receiving his BRAVA cooler & new dash cam.



# Coronavirus

## Offer your customers a range of reduced touch products

Stay vigilant on Covid | **safeguard touch points in your business**

**CORONAVIRUS**

**PROTECT YOURSELF & OTHERS**



Food distribution centres



Warehouses



Convenience stores



Service stations



Aged care facilities



Schools



Hospitals



**Purehold**



**SALTO**  
inspiredaccess



**neptune**  
Security Products



**StepNpull**  
Australia



**BDS**



**LSCA**



**verroo**

### TERMS & CONDITIONS

Product features and pricing in this newsletter are subject to change without notice. Special promotional prices advertised here are for the month the newsletter has been published. However, some offers may commence on or extend beyond the promotional period. Most products have been photographed in-house and are identical to what you will receive. Information presented in this newsletter has been checked and is believed to be correct at the time of printing, however, errors and omissions may occur. LSC can not guarantee prices, specifications, or features of products that may change after printing.