

# LSC

NEWSLETTER



# LSC



December 2020 | Issue 449

**THIS MONTH:  
LOX ARE HERE - ELECTROMECHANICAL SOLUTIONS  
AUTOMOTIVE YEAR IN REVIEW  
2020 PRODUCT HIGHLIGHTS**





Security Tech Germany

LOVE IT?  
LOCK IT

PRECISION  
GERMAN  
ENGINEERING

# ABUS 83AL45 SERIES PADLOCKS

Titalium™ is a special alloy which gives incredible strength. This lightweight and durable material offers superior toughness, corrosion resistance and value compared to many alternatives.

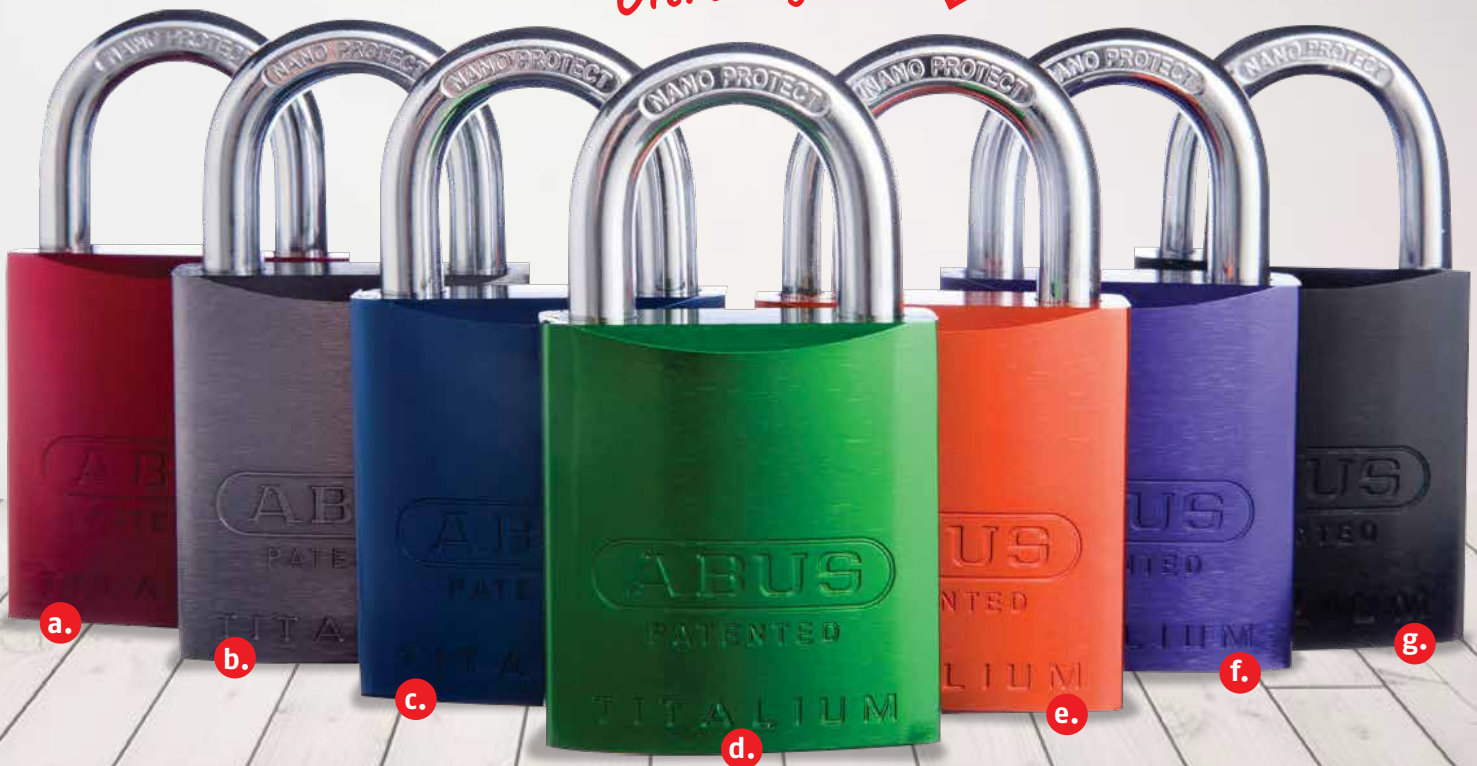
These tough, corrosion resistant padlocks are available in a range of instantly recognisable colours to suit your customers' job requirements.

- Colour anodised aluminium alloy
- 6 pin cylinder assembly
- Hardened alloy steel shackle with Nano-Protect™ plating
- Standard shackle 25 mm
- Large range of replacement shackles
- Standard keyway (LW5)
- Uses standard 570 6 pin barrel
- Compatible with most restricted inline systems

**Also available in embossed to suit your corporate colours or your customers.**

Talk to your Account Manager today.

*Ultra-light!* ↘



- a. 83AL45NREDKD    b. 83AL45NTITANKD    c. 83AL45NBLUKD    d. 83AL45NGRNKD  
e. 83AL45NORGKD    f. 83AL45NPURKD    g. 83AL45NBLKGD



locking for life



## URBAN LE SERIES LEVERSETS

BRAVA LE Series Leversets feature a modern sophisticated lever shape, just the thing to upgrade your customers' tired old hardware at an economic price.

- Modern straight lever design
- Standard finishes satin stainless steel, chrome polish and matt black
- Entrance function Silca LW4 profile (Rekeyable to 6 pin LW5)
- Entrance function construction keyable on all chambers (Using BRUCKBALL)
- Tiebolt concealed fixing
- Available in satin stainless steel, chrome plate & Matt Black



Urban Leverset Entrance Boxed

LEX900B



Urban Leverset Entrance Boxed

LE600B



*available functions entrance,  
passage, privacy and dummy*



Digital Lock Latch 28mm suit  
BL2000 LH SC

BLS272000LH



Digital Lock Latch 28mm suit  
BL5000 RH SC

BLS275000RH



## 28MM B/SET MORTISE LATCHES

*Did you know!*

LSC stock BORG 28mm B/Set Mortise Latches to suit the BL2000 & BL5000 Series locks.

- Supplied in Left or Right (field changeable)
- Suitable for most aluminium shop front doors
- Supplied with strike, dust box & mounting bracket
- Supplied with mounting tabs, shims & fixing bolts

*Great for aluminium doors and  
will also fit colourbond gates with  
50mm x 50mm posts*





# 2020 FINALISTS

## WHAT DOES WINNING THE AWARD OF AUSTRALIA'S BEST YOUNG LOCKSMITH MEAN TO YOU?



**Joel Gurney**

JG Lock Safe & Security | NSW

“

I believe I should be considered as Australia's best young locksmith because of my achievements over to past few years & my continued drive to improve myself, my company & this industry.

”



**Maxwell Dicks**

A.S.A.P Locksmiths | VIC

“

I don't know exactly what makes Australia's Best Young Locksmith, but I have been known to 'speak good' on occasion and that is certainly an important skill when representing any industry. I am also a fearless advocate for what I believe in and always willing to do what I feel is right.

”



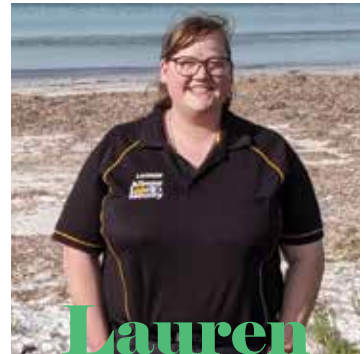
**Jesse Shepherd**

Valley Locksmiths | SA

“

I would be honoured to even be considered. Even if I don't get selected to become Australia's best young locksmith I will always continue to keep learning as I have a genuine passion for this amazing industry and the rewarding career I have established.

”



**Lauren Eaves**

Albany Lock Service | WA

“

This award is a way to say thank you to all those who supported me and to show all the others out there that, yes I am a female, no I don't do the books, yes I can help you, and no, the guy standing next to me isn't the tradie, I am.

”

## CALENDAR

### FINAL JUDGING

Wednesday 9th December 2020

### WINNER ANNOUNCEMENT

Monday 11th January 2021

## PRIZE

- ABYL TROPHY
- \$2500 WORTH OF TOOLS AND PRODUCTS
- \$2000 TECHED VOUCHER
- \$1000 TRAVEL AND ACCOMMODATION
- APPLE IPAD PRO

Sponsored by:





# PRODUCT SPOTLIGHT

## SALTO XS4 ONE ESCUTCHEON



The SALTO XS4 One escutcheon is a revolutionary stand-alone electronic lock thanks largely to the level of technology packed inside that brings together the convenience of an offline point - easy installation and no wires - with virtually the same kind of power and performance of an online point.

The SALTO XS4 One is the evolution of the Original model with a built-in, totally new reader available in two colours. It includes the latest electronic components in order to warranty a future proof feature compatibility The XS4 One version is specially designed to fit most Euro profile doors, even narrow profile framed doors.



**SALTO**  
inspiredaccess



EB750Z00NEBB6

## CREONE KEYWIN6



## LOGIC, CONTROL, AND IMPROVED ADMINISTRATION

KeyWin6 is Creone's latest Web Hosted service of the administrative tool for securely managing keys and valuables. It offers the industry's highest level of IT security, along with seamless and intuitive functionality.

One or more administrators can manage key cabinets and valuables with the highest possible precision, from anywhere in the world. It is easy for you to give access to individual users or groups and to connect these with the relevant keys or valuables. With its automatic registration, you can always keep track of who is using what. The expanded search and filtering function simplify your daily use, offering a higher level of precision.

## GIVE YOUR CUSTOMERS WHAT THEY ARE LOOKING FOR OR EASY UPSELL



### Key Ring Opener Tool

- Use this handy tool to open doors without having to touch them
- Includes a key ring so you can carry it with you wherever you go
- Avoid touching contaminated unclean surfaces with your hands
- Multiple uses. Easy add on sale when cutting keys POS
- The natural brass models have inherent anti-bacterial properties
- Used to pull doors open or lever handle furniture & pressing elevator/pedestrian/ATM buttons



Visit [lsc.com.au](http://lsc.com.au) to view the complete range!



**FREE DELIVERY!\*** for all orders over \$150 \*Exclusions apply.

**LSC**



**NEW**

# OEM LOOKALIKE REMOTE KEYS FROM SILCA

Silca lookalike OEM keys are packaged individually in a plastic clamshell for easy identification and hook display. They are programmable with Smart Pro or similar.

*Silca for quality and long term reliability.*



*Suit VW*

### SHU66R17

- 3 button flip blade remote key
- HU66 blade
- Transponder ID88

*Suit Suzuki*



### SHU133RR18

- 2 button fixed blade remote key
- HU133R blade
- Transponder ID46

*Suit Peugeot Citroen*



### VAR16

- 3 button flip blade remote key
- VA2 blade
- Transponder ID46

*Suit Renault*



### VA2P26

- 4 button proximity key
- VA2 emergency blade insert
- Transponder ID49

*Suit Renault*



### SVA150S21

- 2 button slot key
- VA150 emergency blade insert
- Transponder ID46



# AUTOMOTIVE YEAR IN REVIEW

Despite the global impact of COVID19 Smart Pro software development continued unimpeded. The team at Advanced Diagnostics, including those based here in Australia, were responsible for several developments to include but not limited to World Firsts and coverage of previously hard to do, untouchable and current model vehicles.

New software developments and enhancements to existing software in 2020:

- SD753939AD ADS2292 VAG 2019
- SD753916AD ADS2287 Renault
- SD753916AD ADS2287 Renault 2019
- SD753712AD ADS2269 Ford
- SD754908AD ADS2321 Hyundai/Kia 2020
- SD754587AD ADS2297 Nissan 2020
- SD754548AD ADS2295 Fiat-Alfa Romeo-Jeep 2019



For a more model specific list please refer Smart Pro Developments in CarLab, <https://www.lsc.com.au/page/TechEd/Vehicles/>



## TECHED is now Online 24/7

We are pleased to now offer our renowned TechEd Training by way of online delivery. Commencing with AEE101 Basic EEPROM, customers can now complete the course at their own pace and in their own time from the workplace or home.

This course is ideal for those wanting a refresher training or those wanting to get involved in basic EEPROM for the first time. This course is also a precursor for those wishing to get involved in Advanced EEPROM which will also be offered online in the near future.

## Major New Software Release for VAG

Advanced Diagnostics have released a major software development for Volkswagen Audi Group (VAG). Applicable to Smart Pro only the software covers key programming for vehicles utilising the MQB platform. The update also covers Volkswagen Amarok, Caddy & Transporter bladed keys, and Audi A1 & Q3 bladed keys.

Please refer to LSC website, CarLab, MYKEYSPRO and the Smart Pro Menus for more detailed applications information.





dormakaba released the **M Series BLE smart lock**, a new digital door lock that allows you to unlock your door with a PIN, an RFID Card/Fob, a key or a Smart phone via Bluetooth.



Neptune Security Products continue to grow with the addition of new **touchless REX buttons**, **resettable call points** and **power supplies** to the extended range.



The New Creone **ValueBox Control** enables staff and organisations to simplify administration and improve security for sensitive or expensive equipment and personal belongings.



Showcasing Australian ingenuity at its best, RMD Innovations released the revolutionary Verroo **Smart Range** of battery powered locking devices designed with security, flexibility and convenience in mind.



SALTO released the compact **Neo Cylinder**. This electronic cylinder lock delivers an easy-to-use electronic locking platform that integrates all of the physical security needs through smart, wireless, and battery-operated smart cylinders.



The HID **Signo** signature line of readers represent the most advanced and secure reader in the industry. The range provides a simple and effective approach to secure access control for almost any scenario.



The NEW version v4.0 boards arrived from CS Technologies. The Evolution Access Control series comprises of two full function network access controllers; the **EVO4 4-Door** and **EVO2 2-Door**.



Dahua Technology continued to push the boundaries with the release of their **AI WizSense range**. Performance and price are both achieved with this 6MP eyeball camera.



# 2020

## YEAR IN REVIEW



The ABUS **Touch** is the first padlock from security specialist ABUS that can be unlocked using an individual fingerprint instead of a key.



ADI Security products released the **5004 lock bolt** security shield that protects the bolt and the cylinder from external attack.



Building on the huge popularity of the original Silca Chipolo Bluetooth Key finder, the new **Chipolo One** stands out as a high quality, reliable version that is easy to use.



Borg Locks **'Easicode Pro' Series** is designed with the end user in mind, because the code can now literally be changed in seconds.



Lock Focus released the **Horizon digital lock** which can be made to unlock and/or deny entry for a specified period each day. Designed for use on lockers and personal storage applications.



Whether your door is in a high-risk or low-risk area, push or pull, Purehold offer a range of unique, innovative **hygienic door handle solutions** that reduces cross-contamination between users.



**Promaster 8 went mobile**, allowing a highly secured encrypted data communication sending key cuts & pinning information to a mobile device.



StepNpull® is a **foot operated door opener** that works on any latch-less commercial wood or metal door.



**FREE DELIVERY!\*** for all orders over \$150 \*Exclusions apply.

# BE KEY SAFE THIS CHRISTMAS WITH LUCKY LINE

Being locked out or losing a key can be very frustrating. Lucky Line products have a range of solutions from key hidiers that will allow your customers to hide a spare key or Secure-a-key clips.

Their variety of different key hidiers, ranging from fake rocks to fake sprinklers to the small key safes are ideal solutions for this upcoming holiday season.



*will not rust!*

**Extra Large Magnetic Key Hider**

LUL91201



**10 Extra Large Magnetic Key Hiders on Display Card**

LUL91210

*hide that spare key so you are never locked out*



**Rock Key Hider**

LUL90601

*weather resistant*

*easily clips to belts*



**Keyclip Secure-A-Key**

LUL40412



**10 Keyclip Secure-A-Key on Display Card**

LUL40512

*always have your keys at hand with luckyline key slip on and key clip key rings.*



## COMING SOON...



# GET TO know US

TSU Team



LSC is proud to support our customers across our industry leading portfolio of security products with technical support from real people - typically from the industry, highly qualified and passionate.

We believe our customers deserve to be backed up by a real person, not a YouTube clip, or an application guide lifted from another market.

This month we focus on our TSU team, who are here to look after you when you're using a key machine, locksmithing software, or automotive key programming device. Next time you call us, these are the people who are here to help you:

## CRAIG



- 26 years in the industry.
- First locksmith job was at Austen locks, my families 4th generation Locksmith in Springs, South Africa.
- Favourite product is Silca ProTech.
- Loves working on Silca products, machines and software. From creating cards to fine tuning machines.
- On the weekend you'll find me camping or 4 wheel driving, and exploring country Victoria.

## JUSTIN



- 10 years in the industry.
- First locksmith job was in far north Queensland to be specific (country boy).
- Favourite product is Orange 5 with a side of Tango.
- Loves working on Auto EEPROM solutions.
- On the weekend you'll find me enjoying the Melbourne café and pub scene, exploring the countryside, designing and programming mostly pointless programs and electronics projects, exploring dungeons in roleplaying games – both virtual and pen and paper.

## RICHARD



- 20 years in the industry.
- First locksmith job was in Auckland.
- SmartPro for sure is my favourite product. Vagtacho and Tango are the runner ups.
- Love working on challenging auto problems. I like to make sure the SMART Pro menu layout is up-to-date and as accurate as possible. Building Training rigs is good fun too.
- On the weekend you'll find me renovating the house, being a Space Nerd, and spending time with the kids.

## AARON



- 3 years in the industry.
- First locksmith job was in Victoria.
- Favourite product is the Silca Futura (all versions) has to be my current favourite.
- Loves working on machinery general. Being elbows deep in machine trying to work out what it is meant to be doing and why it isn't is always interesting and fun!
- On the weekend you'll find me playing video games or working on my own DnD world (everything from writing up details on the towns and people to building miniatures of the buildings and landscape).

## SARAH



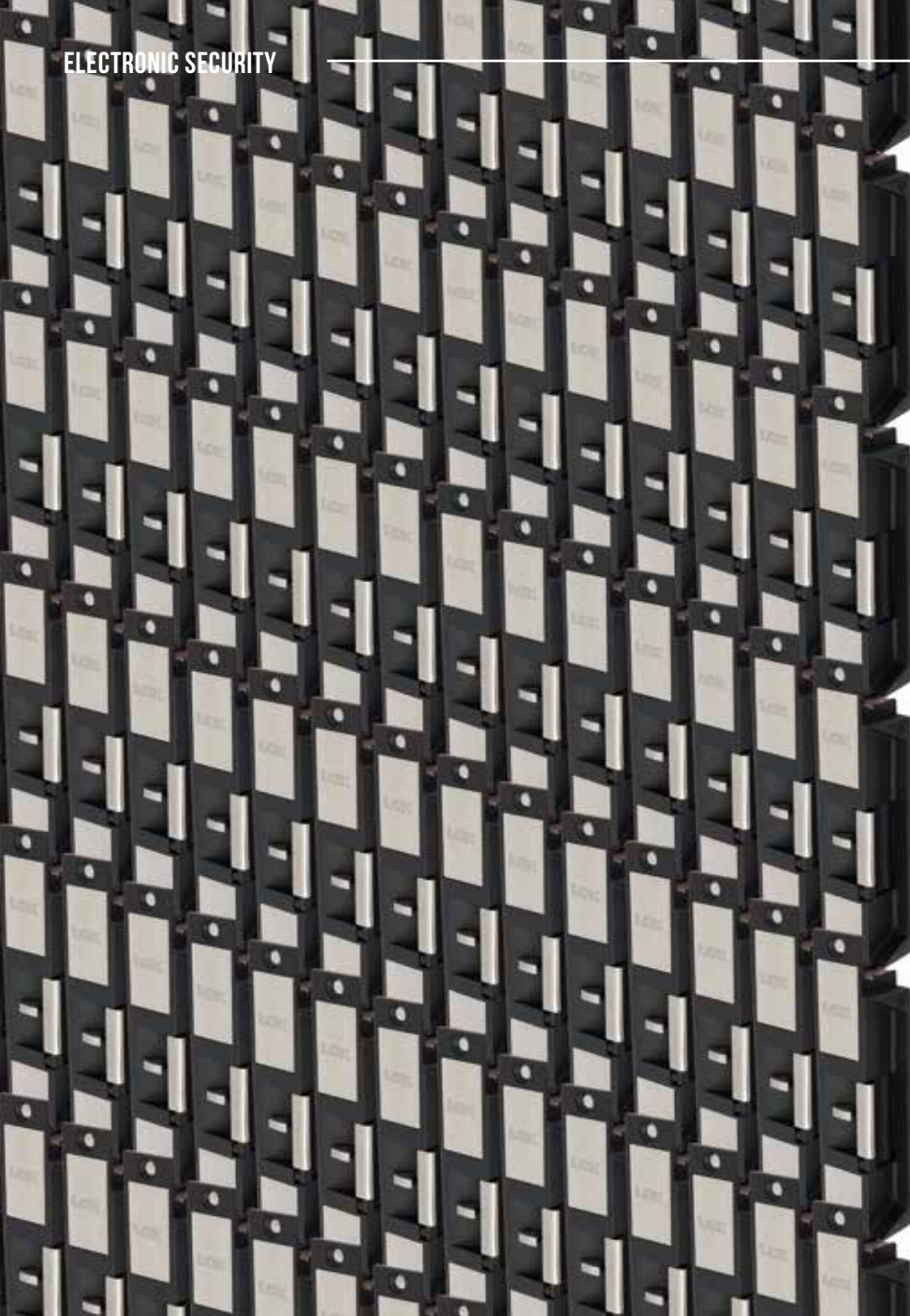
- 12 years in the industry.
- First locksmith job was in Victoria.
- Favourite product is WHS PM8 and Silca Protech.
- Loves working on software related problems.
- On the weekend you'll find me seeking nature, bushwalking, and getting out of the city.

# TSU TEAM



**CLICK&COLLECT** Free pick-up from our branches

**LSC** 11



# LOX ARE HERE.

THE PRODUCTS  
THE DISTRIBUTION  
THE PEOPLE  
ARE THE SAME

**NEW**

LSC is proud to distribute a wide range of electromechanical locking solutions from LOX Locking. The new range will consist of electric strikes, electromagnetic locks and electromechanical drop bolts.



Part no:  
LES10



Part no:  
LES20



Part no:  
LES20M



ELECTROMECHANICAL LOCKING EXPERTS





# THE ART OF SURVEILLANCE

## Milesight H.265+ Network Surveillance Solution

Better Inside, More in Sight



LSC is proud to announce we have been appointed a Milesight Technology Distributor in Australia and New Zealand.

Milesight's philosophy since inception has been to manufacture best-in-class video surveillance products that are feature rich and of the highest quality.

Choosing to focus on design and product quality their range of IP cameras and NVR's target middle to high end security with smart features such as VCA embedded as standard on every camera and convenience such as online firmware upgrades for NVR's.



Region  
Entrance



Region  
Exiting



Advance  
Motion  
Detection



Tamper  
Detection



People  
Counting



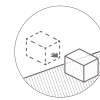
Line  
Crossing



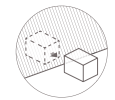
Loitering



Human  
Detection



Object  
Left



Object  
Removed

### MINI SERIES

The Milesight Mini Camera Series features ultra-mini size, stylish design and easy installation. The mini security series not only aspire to protect your property with top notch megapixel video quality, but also combine sleek designs to cater for discerning buyers.

### PRO SERIES

The Milesight Pro Camera Series is the professional-level network camera designed for those who are seeking the utmost in quality, integration, design and reliability for their demanding surveillance needs.

### PTZ SERIES

The Milesight PTZ Camera Series provides pan, tilt and zoom functions enabling wide area coverage and all-round monitoring. In combination with high resolution and HEVC compression, the cameras provide zoom in views in great detail.

### LPR SERIES

The Milesight LPR/ANPR Camera Series is embedded with an LPR algorithm. It can automatically detect and capture licence plates in real time and compares against a predefined Black and White list, then takes appropriate action such as generating an alert.

### PANORAMIC SERIES

The Milesight Panoramic Camera Series features advanced technology, bringing a panoramic viewing experience with high resolution and detailed images that provide an enjoyable user-experience.

### NVR SERIES

The Milesight 4K H.265 NVR Series offers a robust system for diverse applications and empowers users to set up and manage advanced IP surveillance systems with ease.



Visit [lsc.com.au](http://lsc.com.au) for the complete range of Milesight products.



**FREE DELIVERY!\*** for all orders over \$150 \*Exclusions apply.



locking for life



ASSA ABLOY



ADVANCED DIAGNOSTICS



# Merry Christmas

Wow, what a year it's been. It's hard to know where to start, other than to acknowledge that I'm sure we're all looking forward to 2021! I know everyone at LSC can't wait to see the back of 2020.

Having said that, I'm proud of our company and industry resilience. Despite lockdowns in April and May we launched a suite of Reduced-Touch products in record time, allowing you to engage with your clients and offer security and safety solutions relevant to the times.

Our team adapted overnight; we leveraged our ongoing investment in digital tools including our Website, Cloud-based ERP, VOIP phone systems and mobile computing to deliver uninterrupted services across the country. If you'd told me we'd have to do that I'd doubt it – but necessity is the mother of invention.

I want to thank the warehouse team who came into work every day, our account managers who worked the phones and visited customers where they could, to the lesser seen IT, Accounts, Tech Support, Production and Product Management people. Everyone adapted to keep you supplied with products, support, advice and the full LSC service.

Our PM team have been busy too, I'm excited about Milesight, CS-Technologies, Salto, and big news from Silca coming in the new year. ABUS also have a big announcement for later in 2021 - stay tuned as we continue to share the best security offerings.

I remain optimistic for the year ahead. Despite the uncertainties around the economy, Security remains essential. Government support for business investment is on the table, and our team can help you with any opportunity.

Lastly, I want to thank you our customers for working with us and maintaining your support during this difficult year. I hope we were able to be of service and I promise, 2021 will be better than ever with LSC.

I wish all our customers and staff a very Merry Christmas and Happy New Year.

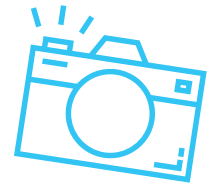
*- Mark Johnson*

## HOLIDAY TRADING HOURS

THU	24 DEC	OPEN	WED	30 DEC	OPEN
FRI	25 DEC	CLOSED	THU	31 DEC	OPEN
MON	28 DEC	CLOSED	FRI	01 JAN	CLOSED
TUE	29 DEC	OPEN	MON	04 JAN	OPEN



# HAPPY CUSTOMERS



VIC edition

## MGB LOCKSMITHS



Marcus from MGB Locksmiths with his brand spankin Silca Futura Pro.

FINALLY 🍩 OUT 🍩  
LOCKDOWN!  
*we're happy to once again visit our  
Victorian customers*

## PRECISION LOCKSMITHS



Connor and Liam from Precision Locksmiths posing with their Silca Unocode Pro.

## LOCKWORX AUSTRALIA



Peter Barton and Zac Houghton from Lockworx Australia with their Advanced Diagnostics SMART Pro.

## INTEGRA LOCKSMITH SERVICES



Dino from Integra with his new Advanced Diagnostics SMART Pro.

## P & J LOCKSMITHS



Peter Peers from P & J Locksmiths with his Silca Futura Pro.



# Coronavirus

## Let us help you - ask us how to reduce your touch points

Australian scientist have proven that **Covid-19 can live on some surfaces for 28 days.**

**CORONAVIRUS**  
**PROTECT YOURSELF & OTHERS**



Food distribution centres



Warehouses



Convenience stores



Service stations



Aged care facilities



Schools



Hospitals



Purehold



SALTO  
inspiredaccess



Neptune  
Security Products



StepNpull  
Australia



BDS



LSCA



verroo

### TERMS & CONDITIONS

Product features and pricing in this newsletter are subject to change without notice. Special promotional prices advertised here are for the month the newsletter has been published. However, some offers may commence on or extend beyond the promotional period. Most products have been photographed in-house and are identical to what you will receive. Information presented in this newsletter has been checked and is believed to be correct at the time of printing, however, errors and omissions may occur. LSC can not guarantee prices, specifications, or features of products that may change after printing.