



NEWSLETTER

This Month

NEW Silca Quattrocode D-Series

NEW BRAVA Catalogue

ASRC Success Story with Salto

ABUS Security Chains

ABUS Security Chains, made of special hardened steel are corrosion resistant. Available in convenient set lengths with a protective fabric sleeve to prevent damage. Excellent security for a wide range of applications.

1924
2024
YEARS
ABUS
FAMILY



LOVE IT?
LOCK IT

PRECISION
GERMAN
ENGINEERING

5 mm x 110 cm	5805C110BLK
6 mm x 110 cm	6KS110BLK
8 mm x 110 cm	8KS110BLK
8 mm x 40 cm	8KS40BLK
9 mm x 110 cm	WCH909KS110
9 mm x 110 cm	WCH909KS110L00PTWIN

9 mm x 130 cm	WCH909KS130
10 mm x 110 cm	10KS110BLK
10 mm x 170 cm	10KS170BLK
10 mm x 200 cm	10KS200BLK
12 mm x 120 cm	12KS120BLK
12 mm x 250 cm	12KS250BLK

ABUS **100** YEARS 1924-2024



LSC staff were excited to be in Germany recently to celebrate the ABUS 100 year anniversary and attend the Essen Security show.



Designed to make access easier.



We're **excited to welcome** McGrath Locks to our product lineup at LSC!

McGrath Locks offer a trade grade range of innovative and stylish locking solutions, designed for both residential and light commercial use.

Known for their advanced technology, McGrath Locks provide smart access solutions that eliminate the need for physical keys, providing a sleek and secure way to manage entry.

Designed for Australian conditions with a range of options available such as oval cylinder key override, DDA compliant handles, fire rating and Aussie mortice lock compatibility they are the perfect choice for the home or place of business.

Their range offer great flexibility and supports a variety of access methods, such as PIN codes, Fingerprint, RFID credentials and Bluetooth with mechanical key override. Additionally, they feature weather-resistant designs, ensuring there are suitable options available for both indoor and outdoor applications.



Discover McGrath Locks' range today and elevate your security offering. Visit the LSC website to learn more.



NEW
fingerprint
access

HAMILTON

DDA compliant
digital bluetooth lock

-  Matt black or satin nickel
-  260mm (H) x 45mm (W)
-  200,000 Cycles
-  Timber door, aluminium door
-  18 months*
-  Oval cylinder for key override
-  IP66 rating on external housing
-  Fire rated for 2 hours on Firecore and E-Core doors
-  DDA compliant lever design to satisfy BCA AS1428.1 -2009

MLHAMSNNL
MLHAMBKNL



Download and Install the APP

Enable your smart phone to scan QR code to download the APP. Also you can search "TT Lock" on APP store or Google play to download the APP.



2024 | 3rd Finalist



Josh Caruana

Bond Security Group | Blackburn, VIC

Please provide a short personal biography about yourself:

My name is Josh and I work at Bond Security Group in Blackburn VIC. I went through the bulk of my schooling with no firm idea of what I wanted to do for a career. It was when I was in Year 10 I started to develop an interest in working in the security industry.

At the time I was looking into cyber security and I attended University to study this. However, in my second year of study Covid hit and I dropped out because I found the learning difficult without being in the physical classroom environment. After that I started casual employment while I figured out what I wanted to do.

After a few years I developed an interest in physical security. It was a family friend who was working as a locksmith that shared his experiences which inspired me to become the locksmith I am today.

What are some of the skills and abilities necessary for someone to succeed as a locksmith?

I think there are three main skills/categories of skills that are required for a good locksmith; Hand skills: Whether it be cutting keys by hand, installing locks or making tools for various jobs, the ability to physically execute on a given job is vitally important to any locksmith.

Flexible thinking: In this job we are constantly being presented new and novel problems, whether it be an imported lock that needs repairing, a strange configuration on a door that makes fitting new hardware difficult or a new product, the capacity for flexible thinking is a requirement for being a good locksmith.

Interpersonal skills: Whether it be talking with customers or coworkers, strong communication skills are vital for effective working in this trade. You can know or do everything so being able to ask for help or advise customers on next steps is an indispensable skill.

What key issues do you think will affect the locksmith industry in the next decade, and how should these be approached?

The increasing variation and complexity of the work required/expected. Most people will come to a locksmith if they have a problem with any key or lock regardless of whether it is for a vehicle, residential or commercial job. Whether it is new or old, whether it is antique or digital. This means there is an increasing requirement for every locksmith to be a fairly skilled in all aspects of locksmithing. While not a bad, this puts a lot of pressure on newcomers to the field as well as requiring existing locksmiths to put almost as much time learning the new things as working with the existing products.

One way to alleviate this pressure is to incentivize creating "T shaped people". This means the everyone knows and can do at least the basics of everything and then has at least one element that they specialise in, whether it be automotive or fitting or digital etc. This makes both entry into the trade easier as well as better enabling us to adapt to further changes.

Tell us why you should be Australia's best young locksmith?

Becoming Australia's best young locksmith would be an honour. If you ask anyone around my workshop they will tell you that I am passionate and committed to my work, constantly interested in learning and developing new skills. I am always willing to help support the rest of my coworkers when needed.

Sponsored by



salto

sutton

ROSS

PRODUCT SPOTLIGHT

visit lsc.com.au to see
Silca range!

HOUSE FOR HOUSE KEYS

Get the house key for the house!

Consumers are always looking for different ways to identify their popular keys. Silca offer keys in different materials, colours, styles, shapes and designs – and the newest one is fun, and instantly recognisable.

House For House keys are available in LW4 and LW5 profile, and feature a large, easily recognisable head that looks like a house.

Made from premium special-brass alloy, the same as you're used to, these keys can be stamped or marked as they've got a large square area – or let the head-shape do the talking.

SLW4BB SLW5BB



NEW BDS CATALOGUE

The new version of the BDS catalogue lists in excess of 350 products including new additions. Featuring an extensive range of product inclusive of but not limited to:

- Dress plates
- Blocker plates
- Door wraps
- Installation aids

The new catalogue is a must have reference resource for the van or shop. BDS proudly Australian made.



AUSTRAL SLIDING SLIDING SECURITY DOOR LOCKS

- Mortice deadlock for sliding security doors
- Unlatched by levers from either side
- Snib lockable from inside
- Key lockable from both sides
- Cylinder not included
- Interlocking pin resists the door from being lifted or forced
- Self latching
- Upgradable to triple lock
- Finishes in black, brown, primrose and white



Austral Lock
BY GAINSBOROUGH



ALSD7BLK ALSD7BRN ALSD7PRM ALSD7WHI

ADVANCED DIAGNOSTICS KEY PROGRAMMING

ADVANCED DIAGNOSTICS



Advanced Diagnostics have developed a range of solutions to facilitate key programming when all keys lost on select vehicles. The range of cables also allow for key programming where vehicle manufacturer security does not allow for conventional OBD programming. These solutions provide for a safe and secure approach negating the need to remove components or spike wiring looms.

Maximise your coverage!



**SMART Pro Chrysler Group 2018 Star
Connector Cable ADC2011**

SD753084AD



**SMART Pro Chrysler Group 2018 Star
Connector Cable ADC2012**

SD753920AD



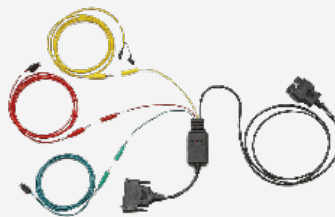
**SMART Pro Gateway Bypass Cable for Fiat
and Jeep ADC2019**

SD756296AD



**SMART Pro Bypass Cable for Renault
ADC2017**

SD755649AD



**SMART Pro Toyota 'H' Bladed All Keys
Lost Cable ADC2016**

SD755976AD



**SMART Pro Emulator for Toyota (DST)
When All Keys Lost ADC2015**

SD755650AD



**SMART Pro Emulator for Ford and Toyota
When All Keys Lost ADC2020**

SD756922AD



**SMART Pro Bypass Cable for Toyota
ADC2021**

SD756924AD



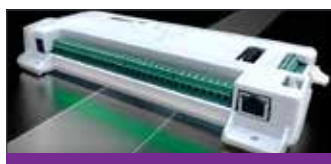
**SMART Pro Bypass Cable for Toyota
ADC2018**

SD756295AD

UPCOMING COURSES

TECHED

Upskill yourself and your team to grow your businesses capabilities



RISCO LIGHTSYS PLUS
ESI502 | LVL 1 | (8hrs) lunch inc.

QLD Thursday, 7 Nov
VIC Thursday, 21 Nov
NSW Wednesday, 4 Dec



MILESIGHT CCTV FUNDAMENTALS
ESC601 | LVL 1 | (6hrs) lunch inc.

NSW Thursday, 14 Nov
VIC Thursday, 28 Nov



TRANSPONDERS & DIAGNOSTIC
ADP202 | (7hrs) lunch inc.

VIC Thursday, 5 Dec



VOLKSWAGEN GROUP KEY
ADP213 | (7hrs) lunch inc.

VIC Friday, 6 Dec



CS TECHNOLOGIES EVOLUTION
ESA401 | LVL 1 | (6hrs) lunch inc.

QLD Tuesday, 19 Nov
NSW Wednesday, 27 Nov
VIC Tuesday, 10 Dec



DAHUA CCTV CERTIFICATION
ESC801 | LVL 1 | (5hrs) lunch inc.

Get in touch for future dates

Explore a sleek, user-friendly design with a vast video library, updated FAQs, enhanced support, and redesigned course pages for seamless learning and access.

Scan here to find out more



visit www.lsc.com.au/teched-training

STREAMLINE SENDING JOBS

ProMaster8 to Silca Unocode

TECH TIP



Over the past few months, Silca and WHS have been collaborating to enhance the user experience and functionality when sending jobs from ProMaster8 to the Unocode F-Series machines.

What's about to be released will be a way to enable direct communication from PM8 to the Unocode F-Series machines.

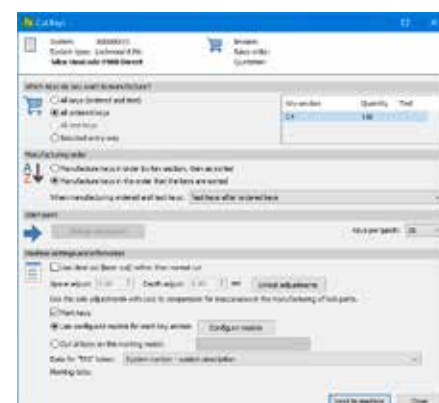
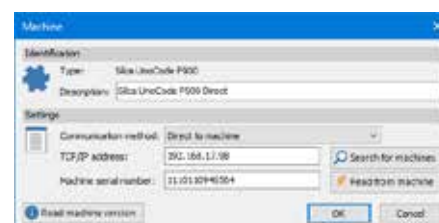
What this means is PM8 sends direct to the machine, and sending data is about 7 times faster – very noticeable on large systems.

ProMaster8 will also be able to read the current 'queue' from the UCF machine and view it in PM8 with the option to remove jobs from the queue.

Even better is the ability to associate marking and engraving models from the UCF with key profiles in PM8 so the correct engraving model is used automatically when sending a job to the UCF. This works the same as it does for the Marker 2000.

You'll also be able to search your local network to find your UCF machine.

Talk to your account manager or our Tech Support to check what versions of machine SW and ProMaster8 are required.





NEW FROM SILCA: QUATTROCODE D-SERIES

Building on the worldwide smash success of the Unocode F-Series machines, attention has now turned to dimple & track keys.

Silca are replacing the Triax family of machines with the new “Quattrocode D-Series”, which is built using the same modular architecture as the Unocode F-Series.

New and innovative features will save time and streamline the process of cutting dimple and track keys, the most noteworthy of which are integrated engraving, and a new robot ‘arm’ which can automatically position the key into the clamp on all sides, saving you the need to turn the key over.

Cutting is faster than before, with the main cutter motor spinning up to 25,000rpm to ensure smooth and fast cutting. To ensure the cutting area remains clean, an integrated air compressor blows air into the cutting area between sides, ensuring the key is seated correctly by the robot arm and swarf doesn’t prevent a perfectly aligned lock into the clamp.



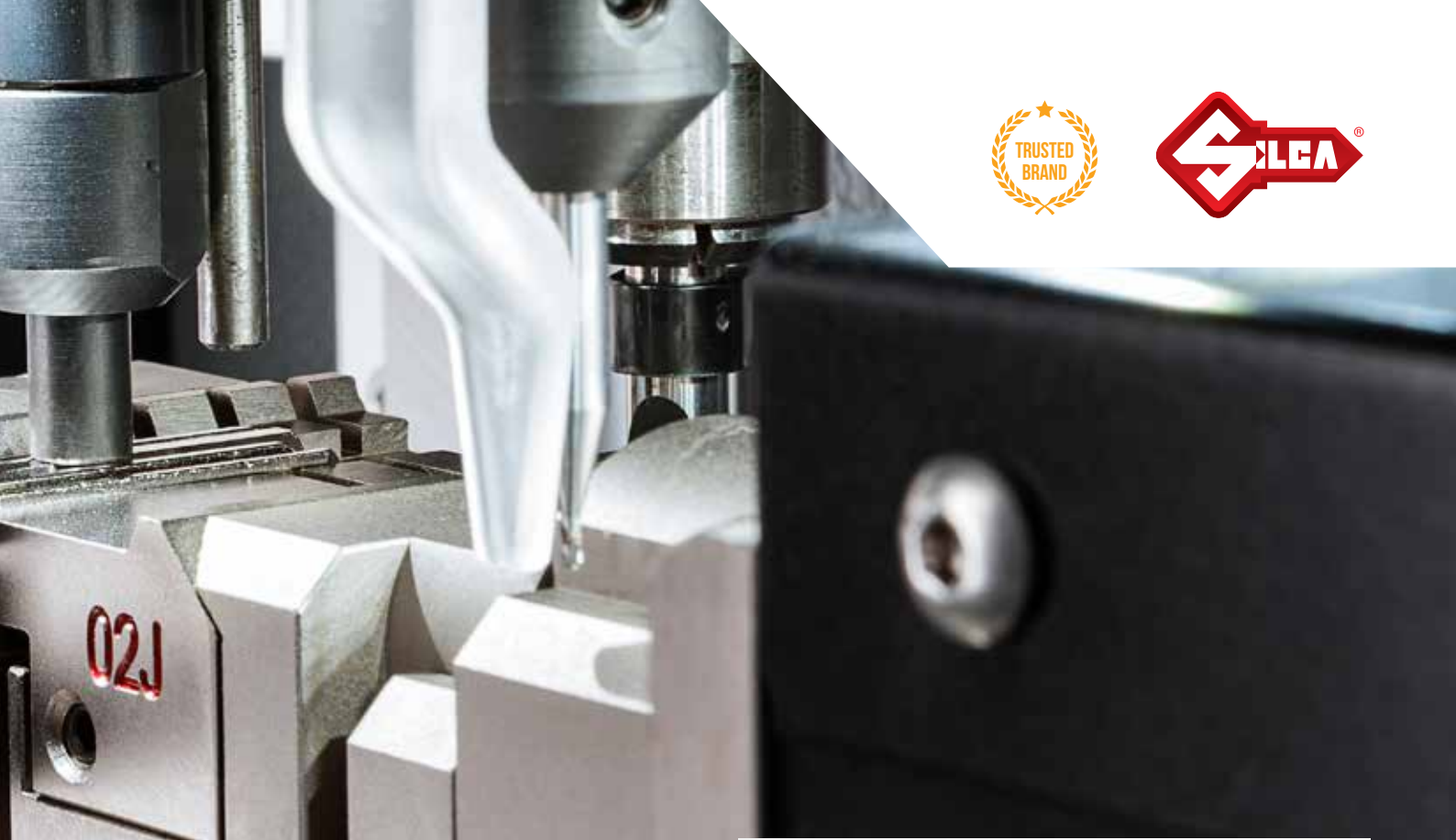
SD8A7049ZB

Keys are cut & engraved in one process – there’s no need to change the clamp, or to move the key to a separate engraving station.

New RFID enabled cutters ensure the correct cutter is installed – if an incorrect one is inserted, the machine will stop – avoiding damaged keys due to incorrect cutter geometry. Cutter cycle counts and wear can also be monitored, and alerts can be set when it’s time to replace the cutter.

As with the Unocode F-Series, the machine is fitted with an industrial touch-screen controller, Wifi and Ethernet connectivity, integrated safety, and an automatic shield.

With the popularity of dimple keys growing in Australia, ask your LSC Account Manager for more information about the Quattrocode D-Series.





locking for life



DISCOVER THE NEW BRAVA CATALOGUE

We're excited to announce the release of the brand-new BRAVA catalogue! Packed with 96 pages of our domestic and commercial door hardware, mortice locks, cylinders, and accessories, this comprehensive guide is designed to help you find the perfect solutions for your customers security needs. Don't miss out on exploring the best in door hardware with BRAVA – Locking for Life.

ADI SL5 LOCKING BOLT

The **ADI SL5 narrow style heavy duty locking bolt** is the industry standard. Suitable for securing shop fronts, warehouses, hotels, community recreation areas, storage facilities and garages. Ideal solution for narrow style doors or gates.

Aussie made = Aussie Jobs

ADI
lockwise



ADI LOCK BOLT SL5 SLIMLINE SC
44143000



ADI LOCK BOLT SL5 SLIMLINE SC less CYLINDER 44143005



ADI LOCK BOLT SL5 SLIMLINE with 100mm TRAVEL SSS ADISL5100THROW

JAAOTY VISIT



LSC along with our partner brands Silca and ABUS sponsor the MLAA's John Andrew Apprentice of the Year Award. Every year the MLAA across Australia and New Zealand run a competition to select the best final year apprentice, the competition is tightly fought, and is quite prestigious. The test covers picking, impressioning, lock-fitting, master keying, automotive, and general knowledge. The prize for each winner and their mentor is an all-expenses paid trip to Silca's factory in Veneto, Italy and ABUS' HQ and factory in Wetter, Germany.

In late September, the winner from 2024 who is Sam Ellison made the trip to Europe. Joined by Mentor John Hassler, the first leg of the trip was a visit to ABUS, focusing on their headquarters, then on to the traditional Diskus production plant, followed by a visit to ABUS Security World.

ABUS Security World is the ultimate security experience where you can immerse yourself in the entire world of security in one place! Each winner enjoyed a guided tour through the mobile and home security environments, and the ABUS museum which showcases the history of ABUS since its foundation in 1924.

With ABUS celebrating 100 years, the hospitality was dialled up to the MAX. The visitors received some extra special exclusive ABUS 100-year merchandise and gifts.

The next part of the journey for the group was to head to Italy to visit the team from Silca. The factory tour started with a look at factory one where 1 million key blanks are produced each day! The group were amazed at all the steps used to create a key blank from the raw materials to the nickel plating and quality assurance testing.

From Factory one we made our way across to Factory two, to see the engineering and design hub for Silca machinery. Here they produce 1000's of machines per year, all hand finished by Italian artisans. We got to see everything from Bravo duplicators, Futura Pro code machines to Unocode F-Series, the new Quattrocode D-Series, and the mighty Protech being assembled, quality tested, calibrated, packed and made ready to ship out.

The group were spoilt on the final day of the tour with a trip to Venice and experienced a number of Italian delights including coffee, pizza, pasta and prosciutto.

We thank both Silca and ABUS for their hospitality, generosity and time.





ASRC Success Story with Salto



salto 
INSPIRED ACCESS

Background

The Asylum Seeker Resource Centre (ASRC) is a not-for-profit providing essential support to asylum seekers and refugees in Australia. Founded in 2001, it operates a large facility in Footscray, Melbourne, offering over 40 services, including a Foodbank, health clinic, vocational programs, and legal aid. The ASRC supports around 7,000 people annually with the help of dedicated staff and volunteers.

Solution

LSC introduced ASRC to Sentry Locksmiths, a Salto Certified Partner. Shane from Sentry Locksmiths explained their recommendation: "After understanding what ASRC needed from an access solution, we felt that Salto would be the best fit. We recommended the Salto Space solution and walked the ASRC team through how it could meet their needs."

The Salto Space system was installed at nine key access points, covering external entry doors, reception, and internal staff-only areas. The external access points prevent unauthorised public entry, while reception uses release buttons to control site access. Secure staff areas were created at the rear of the building to ensure safety and privacy, providing separation from the public.

A previously unused rear automatic door was integrated into the system with a Design XS Reader and Wireless BlueNET single door controller. This allows ASRC staff an alternate entry point in case the main entrance becomes compromised.

The Salto software offers advanced features like timed access modes, audit trails, and automatic staff/volunteer database syncing, reducing administrative tasks and providing greater accountability by tracking access to various areas.

Challenge

The ASRC needed to enhance security while ensuring a welcoming space for staff, volunteers, clients, and the public. Managing a large number of staff working different shifts, the solution had to improve safety without compromising accessibility. Budget constraints were also a key factor.

Conclusion

The collaboration between Salto, LSC, and Sentry Locksmiths resulted in a secure, efficient, and easy-to-manage access system for ASRC. It ensures a balance between safety, privacy, and accessibility, allowing the organisation to continue its vital work with peace of mind.



Scan to read more



HID SIGNO READER FAMILY EXPANDS

HID has expanded its range of Signo readers by adding the White and Tactile Keypad reader.



NEW

HID Signo White Reader

The HID Signo White Readers offer a modern, clean, and sleek design, providing an aesthetic alternative to the standard black models. It is well-suited for environments where design and architectural appearance matter, such as modern office buildings or retail spaces.

Just like other Signo readers, the White reader supports multiple credential technologies, including mobile access via Bluetooth and NFC, providing high flexibility for access control systems.

The Signo White Readers are available in the 20, 20K, 40 and 40K series across the Signo range.



NEW

HID Signo Mechanical Keypad Reader

The HID Signo Mechanical Keypad Reader 40T provides a high-performance, reliable option for harsh environments and a broader choice of Signo reader technology, especially when there is a preference or specification for a traditional mechanical device. Offering robust, positive user feedback, the Signo Mechanical Reader is ideal for use cases where cold and wet weather conditions require gloved hands or when users may have low visibility.

A perfect fit for door applications requiring a wall switch mount, the mobile-ready Signo Keypad Reader 40T supports an unparalleled range of different credential technologies in a variety of form factors including cards, fobs and mobile devices.

These new models reflect HID's focus on expanding the range of access control solutions while ensuring compatibility with modern security demands.

For more information on the new Signo readers, visit the LSC website lsc.com.au/access-control/readers/hid-readers, or speak to your local LSC representative or branch.



IAN BOYD 50 YEAR MILESTONE

If you're not from Victoria you might not realise that in Melbourne we have our own dedicated truck driver - or as he likes to be known; director of transport. Ian Boyd started with us as an 18 year old and has faithfully and consistently run our suburban deliveries for 50 years!

Those 50 years take us back to 1974, and things were very different in so many ways. "Boydie" was employed when he responded to an ad for a truck driver in the local paper - he walked around the corner from home in Peel St North Melbourne to LSC.

The first person he comes across is my Grandfather who was at the packing bench. When he asks for Mr Johnson, my elderly Grandfather, Aubrey, says "yes that's me". Boydie says "good, I'm here about the driver job". My Grandfather says: "only one question, do you have a license?". Boydie nods and says yes, and Aubrey says "well, start tomorrow!" That was it. No aptitude, IQ or drug tests then, and nobody asked to see or recorded a copy of the drivers license (he does have one).

Boydie shows up the next day, my father Stuart sees him and asks who he is and the rest is history.

To put Boydie's incredible contribution into perspective, LSC was founded in 1926 and is now 98 years old - Ian Boyd has worked here for over

half that period. There are only two people with longer tenures, Aubrey Johnson, the founder 1926-1983 (57 years), and Stuart Johnson 1948-2004 (56 years)!

In 1974 LSC had 30 staff working out of one branch in Queensberry St Nth Melbourne. Today we're over 200 staff, 6 branches and a DC. Through the last 50 years there have been many changes and incredibly important additions to our product range such as ABUS and Silca and now everything electronic security, but, there has been one constant: Ian Boyd.

I thank Ian most sincerely for all the millions and millions of kilometres he has driven for LSC and all the customers he has helped. He is well known to all the Melbournian Locksmiths and infamous for his repartee, all 'PC' of course.

I am very proud that LSC is a family company and the Boyd family typify that culture as over the years his daughter Naomi, son Jarrod, nephew Danny and many other family members have had stints at LSC.

There is a saying, 'That NO-ONE is IRREPLACEABLE' but, whoever coined that hadn't met Ian Boyd! Thanks Boydie

Mark Johnson



NRL GRAND FINAL WINNERS

LOX
LOCKING

<FSH>
BY SCHLAGE

LOCKWOOD
ASSA ABLOY

During September NSW customers purchasing any electrical locking item went into the draw to win NRL Grand final tickets, as well as some other great prizes. Stay tuned for more competitions in the future and check out this months dormakaba competition!



Lachie and Pete from Mosman Locksmiths enjoying the NRL GF

HAPPY CUSTOMERS

Complete
SECURITY
SOLUTIONS

Australian Owned

Celebrating 100 years of ABUS



Check out our fantastic collection of photos featuring customers proudly wearing their ABUS beanies as we celebrate 100 years of ABUS!



FOLLOW US ON LINKEDIN | [linkedin.com/company/lsc-security-solutions](https://www.linkedin.com/company/lsc-security-solutions)



8
million
MagnaLatch® installed!



Join us as we
celebrate the
lives saved!

WIN
\$15k holiday!

With the amazing milestone of **8 million MagnaLatch® installed** worldwide, we wanted to share the celebration with you.

Over the last 35 years, with your help, MagnaLatch® has raised the bar on gate safety, saving countless lives and keeping our loved ones safe!



Simply **purchase** any D&D product during September to December 2024. **Visit** our competition page, **upload** or retain your proof of purchase, and **enter for your chance to WIN.**

SCAN ME

For full competition
terms and conditions



D D&D Technologies®

TERMS & CONDITIONS

Product features and pricing in this newsletter are subject to change without notice. Special promotional prices advertised here are for the month the newsletter has been published. However, some offers may commence on or extend beyond the promotional period. Most products have been photographed in-house and are identical to what you will receive. Information presented in this newsletter has been checked and is believed to be correct at the time of printing, however, errors and omissions may occur. LSC can not guarantee prices, specifications, or features of products that may change after printing.