

# LSC

NEWSLETTER



THIS MONTH:  
AUSTRALIA'S BEST YOUNG LOCKSMITH | 2ND FINALIST  
NEW DORMAKABA DIGITAL DOOR LOCK  
SMART PRO MERCEDES SOLUTION

**LSC** 

September 2021 | Issue 458



Security Tech Germany



# AUSTRALIA'S MOST TRUSTED COMMERCIAL PADLOCK

## Industry Proven for Reliability | Years of Service | Australian Standard TESTED

With the largest range of options & accessories available, custom etching or embossing & Australian Standard Certified it's no wonder the ABUS 83/45 & 83/50 are the locksmiths' padlock of choice. The standard applies to padlocks used in conjunction with padlock fittings. Requirements that relate to;

- **PHYSICAL SECURITY** is classified under 10 levels, based on performance tests that simulate attack. The security rating is based on the lowest test result achieved.
- **CORROSION RESISTANCE** is classified under 5 levels, based on standard accelerated corrosion tests.



**ABUS 83/45**

**Physical Security Rating SP6**

**Corrosion Resistance Rating C4**

**ABUS 83/50**

**Physical Security Rating SP6**

**Corrosion Resistance Rating C4**



Your customers can rest easy knowing their ABUS 83/45 and 83/50 padlocks are Australian Standard Certified, as requested by many commercial insurers & Government Depts. *Just another reason why ABUS is the locksmiths' padlock of choice.*

**AUSTRALIAN STANDARD CERTIFIED AS 4145.4 2002 - Part 4: PADLOCKS**



locking for life



## BRAVA OL SERIES LOCKS

The most comprehensive cabinet and joinery locking solutions for the Locksmith Professional. Locking cupboards, cabinets, drawers, hatches and showcases? BRAVA OL Series Locks has a product for you.

- All locks use an 8221 (PD) cylinder
- Supplied less cylinder
- Available satin chrome and polished brass
- Largest range of spare parts and accessories
- Compatible with most restricted keying systems



Cupboard Lock

SC BR700LCASC  
PB BR700LCAPB



Latching Cupboard Lock

SC BRL78VLCASC  
PB BRL78VLCAPB



Cam Lock

SC BR820LCSC  
PB BR820LCPB



Cupboard Lock

SC BR800LCASC  
PB BR800LCAPB

✓ SUPERIOR MATERIALS USED ✓ THE EASIEST TO REKEY CUPBOARD LOCK ON THE MARKET ✓ LONGEST BOLT THROW (25MM) ON THE MARKET FOR CUPBOARDS



## BORG INCREASES YOUR OPTIONS

When trying to meet customer demands, it's good to know that BORG increases your installation options. BORG has an extensive range of BL5000 series keypad only and adaptor plate options. No need to order a complete BORG lock just order the outside keypad and adaptor plate to suit. Perfect for retrofitting a BORG digital keypad to an existing mortice lock.



Digital Lock 5401 ECP  
\*Keypad Only

BL5401KSSDDAEC



Digital Adaptor Kit 3572  
suit 5000 Series

BL50013572K



Digital Adaptor Kit 3572  
suit 5000 Series BTB

BL50013572KBTB



Digital Lock 5000 SC  
\*Keypad Only

BL5000KSC



For the full range of BORG keypads and adaptor plates visit [www.lsc.com.au](http://www.lsc.com.au)



2021 | 2ND FINALIST

# JARED MIDDLETON

NORTHWEST LOCKSMITHS (WA)



## Please provide a short personal biography about yourself.

Hi my name is Jared. I enjoy Spearfishing, barbecues on the beach and a good Hawaiian shirt. I remember when I was about 10 I was going on a fishing trip with my grandparents when the night before I found a combination padlock in their kitchen drawer and my pop suggested I bring it to keep me occupied for the 2 hour drive the next day.

Unfortunately, he hadn't changed the combination from four 0's and I had it open before we had backed out of the driveway.

Fast forward a few years I finish my apprenticeship and after working as a Locksmith for 8 ½ years in Perth I needed a change of scenery. After getting an opportunity to move to Broome for work in 2019 my days now consist of sun, sand, sea and locksmithing.

## What do you most enjoy about your work as a locksmith?

What I enjoy most about my work as a locksmith is the experiences it has granted me and the places it has taken me.

When you work in the Kimberley getting to every job is not as simple as driving there in a work van. It can be whole day trips to remote indigenous communities battling unpredictable road conditions and no phone signal.

Getting tendered out to a cruise ship stuck at sea to remove and re-cut a broken key so they can get the show on the road. Or, finding out the morning of I'll be getting a chartered flight up the peninsula to open a drug safe.

It's with this uniqueness that being a locksmith brings that I've had the privilege of seeing some amazing

parts of this country that most people would only dream of.

## What key issues do you think will affect the locksmith industry in the coming decade and how do you think these should be approached?

Advancements in technology whether it be general, automotive or even 3D printing will make providing security to clients in the coming decade look very different. If you're not willing to adapt to the world changing you are going to be left behind quickly.

As an industry we need to protect our trade by bringing in tighter laws to stop "handyman" companies doing lock work. More often than not a real locksmith will have to go and clean up the mess which could of been a simple job if we were called in the first place.

## Tell us why you should be Australia's best young locksmith.

This is definitely the hardest question to answer but I'd have to say because I don't think of it as just a job.

For me it's being part of the community and helping people. It's being ready for when the phone rings and you never know what's going to be on the other end. It's opening a car with a child locked inside and seeing the relief of the parents when they're out and safe.

It's making time for jobs at the local hospital when Covid first hit knowing the staff there had enough to worry about already. Or the moment when you feel the lever fall into the wheels of a safe you're opening that everyone thought would be impossible. You don't get moments like that with other jobs. That's why I love being a locksmith. It's what I do today, it's what I'll do tomorrow and I look forward to where it will take me in the future.

Sponsored by:



A family owned Australian business since 1926

# PRODUCT SPOTLIGHT

## DESIGNED FOR MAXIMUM PERFORMANCE

The ABUS SecLight LED torch range provides powerful illumination with long runtime and high light intensity. ABUS's unique cuboid design make these torches practical as it can be put down anywhere without rolling off the table, bonnet or other smooth surfaces because of its square shaft. Supplied with storage pouch, nylon loop and premium batteries. Finished in horizon grey.

### Part Codes:

TL517C: 450 lumens, ideal for on-the-go

TL525C: 500 lumens, ideal for travelling, car and toolbox

TL530C: 900 lumens, perfect for when powerful light intensity is required both near and far range



RVCM52W1400A

## NOW AVAILABLE VUPOINT 2MP WI-FI CAMERAS

The 2mp bullet camera is a quick and easy solution to add HD video verification to your RISCO alarm system.

It connects directly to the RISCO cloud using the Wi-Fi network, and using the intuitive iRISCO App, users can experience real-time viewing of the cameras and playback of video in the event of an alarm activation.

The VUpoint solution is a seamless integrated HD video solution and a must for any alarm installer.

## REDUCING THE SPREAD OF GERMS

Neptune touchless sensor mullion mount exit button with LED.

We proudly stock a wide range of Neptune exit buttons and switches with a variety of actuators to suit different applications, including dome, flat button and infrared touchless.

The perfect addition to any access control solution, regardless of size.



**FREE DELIVERY!\*** for all orders over \$150 \*Exclusions apply.





**NEW** SILCA LOOKALIKE KEYS



*suit Hyundai*

**Silca Remote Auto 3B Flip Blade**  
SKIA8R32

- ID46
- 433MHz
- KIA8 flip blade included



*suit Peugeot/  
Citroen*

**Silca Remote Auto 3B Flip Blade**  
SHU83R21

- ID46
- 433MHz
- HU83 flip blade included



*suit Kia*

**Silca Remote Auto 3B Flip Blade**  
SKIA8R28

- ID46
- 433MHz
- KIA8 flip blade included



*suit Alfa Romeo*

**Silca Remote Auto 3B Proximity Key**  
SGT21P27

- ID49-1E proximity key
- 433MHz
- GT21 emergency blade insert included



*suit Peugeot/  
Citroen*

**Silca Remote Auto 3B Proximity Key**  
SVAP25

- ID46 Proximity key
- 433MHz
- VA2 + HU83 emergency blade inserts included



*suit Fiat /  
Jeep*

*model 500x /  
Renegade*

**Silca Remote Auto 3B Proximity Key**  
SSIP22P36

- ID49-1E proximity key
- 433MHz
- SIP22 emergency blade insert included



*suit Jeep*

*model  
Compass*

**Silca Remote Auto 3B Proximity Key**  
SSIP22P40

- ID49-1E proximity key
- 433MHz
- SIP22 emergency blade insert included

**TECHED** **NOW ONLINE**  
**INTRO TO BASIC EEPROM**

- ✓ Convenient Self-paced learning
- ✓ Savings by way of not having to attend a specific venue or take time away from business
- ✓ High quality learning material compiled by recognised industry experts in this field
- ✓ A rich mix of theory, narrated demonstration videos and animations
- ✓ In built assessments to gauge learning and understanding of subject matter





## NOW AVAILABLE UNIVERSAL REMOTES



GET IT ON  
Google Play

The Silca universal automotive remotes are ideal for both all keys lost and spare key situations. This new universal remote provides the locksmith with a solution that is low cost and high profit margin without sacrificing quality and reliability.

### Why Silca Universal SRP remotes?

- Extensive vehicle coverage in local market
- Quality remote fob
- Silca made quality flip blade
- Tested locally
- Superior smart phone app with brand and model year association
- Product warranty
- Stock on hand



*The MySilca SRP free download from the Google Play Store!*

SD753938ZB



SIRFH13 / SIRFH13T



SIRFH14 / SIRFH14T



SIRFH15 / SIRFH15T



SIRFH16 / SIRFH16T



# ADVANCED DIAGNOSTICS SMART Pro MERCEDES\* SOLUTION

**NEW**

Introducing the new Mercedes key programming solution from Advanced Diagnostics and Silca. This new addition to Smart Pro is a fast, reliable and safe method of adding keys to many Mercedes models, 1996 – 2014.



The start-up kit comprises of a new Smart Programmer (ADC260) and 3 high quality Silca IR keys. The programming procedure is as easy connecting the ADC260 to the Smart Pro and vehicle, then following the Smart Pro on screen prompts.



## SD755333ZB ADA SMART PRO MERCEDES KIT (Including Smart Programmer and 3 keys)

- Working key required
- Internet connection required
- **No token required**
- FREE password calculation
- Programming licence auto activates on Smart Pro when Smart Programmer connected





### SHU106S23 SILCA IR SLOT KEY

- Similar design to original
- 3 buttons, lock, unlock & boot
- Emergency blade HU106 included
- Technology allows automatic open and close of windows just like original keys
- Keys can be reset to virgin status and reprogrammed
- Remote frequency can be programmed to either 433 (default) or 315MHz
- Hook display packaging



### ADC260 SMART PROGRAMMER

The ADC260 Smart Programmer is a light weight easy to use device required for programming keys to select Mercedes® vehicles.

The IR key emulator is compatible with Mercedes® ignitions and simulates the original key for the purpose of reading immobiliser data from the vehicle.

The base station allows for read / write operations. The ADC260 device connects to the Smart Pro by way of USB.

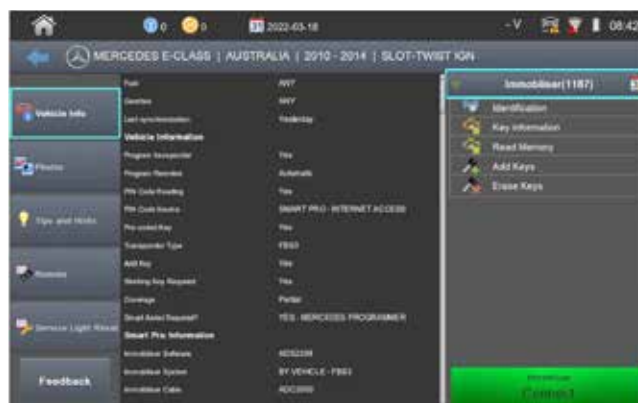


### SOFTWARE ADS2298 FOR MERCEDES®

Clear and concise application list includes model, date range and chassis code.

Reading of IR keys in standalone mode. Self-Test function of the ADC260 programmer.

Detailed vehicle information, exact functionality permitted together with images, tips and hints.



For video tutorial refer to LSC product webpage



**FREE DELIVERY!\*** for all orders over \$150 \*Exclusions apply.

- ✓ Tough
- ✓ Reliable
- ✓ Easy to fit
- ✓ Rekeyable



## YOU LOCK WISE WHEN YOU CHOOSE ADI

- 45 x 155mm body size
- 13mm diameter bolt with 50mm throw
- Hardened strike plate



**5004 Satin Chrome Lock Bolt 44142000**

- Supplied with mounting template and all fixing componentry



**5004 Satin Chrome Less Cylinder Lock Bolt 44142005**

- Supplied less cylinder, with cam, making it ideal to add to an existing master key system



**5004 Satin Chrome Lock Bolt 44142009**

- Supplied sub-assembled and less barrel
- Ideal for use in your master key systems

*(Sub-Assembled)  
Less Barrel*



sargent & greenleaf

## S&G GOVERNMENT APPROVED LOCKS

### 2890-420MA and 2890-440MA

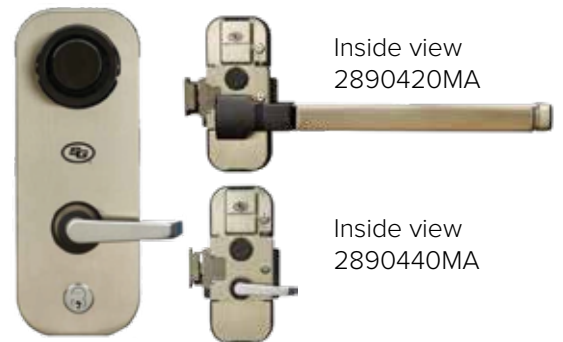
The S&G 2890B provides both secure entry and life safety in one integrated solution. It works in conjunction with both approved combination locks to provide the highest level of safety and security of SCIF's (Sensitive Compartmented information facility)

Available in centre locking module with lever and centre locking module with panic bar

### 2740-400 Maximum Security SCEC Approved Lockset

Sargent and Greenleaf safe locks have been protecting the assets of banks, businesses and governments for more than 150 years. The S&G 2740B lock represents the latest design advances to produce an electromechanical lock specifically engineered to secure SCEC approved containers.

- ✓ SCEC approved for Class A and Class B containers
- ✓ SCEC approval level SL4



Inside view 2890420MA

Inside view 2890440MA



# SECURE6



## SECURE6 B LONG LIFE - 2029

*From a single door, to a multi storey building, Secure6 has you covered.*

Secure6 is a restricted key system developed by LSC specifically for the Australian locksmith market. It is a 6-pin inline system that is high quality and great value. It offers locksmiths a very competitive product in the market with long protection.

- Designed and built in Australia with leading locksmiths
- Fully compatible with most commercial locks
- Unique profile guards against picking and other unauthorised entry
- Easy key ID with a choice of 10 different colour inserts
- Secure6 B, additional barrel profile which features legal protection against duplication until 2029



Custom cylinder etching available!



Secure6 catalogue out now! View online or ask your account manager for a copy.



## USING YOUR SILCA UNOCODE F-SERIES MACHINE WITH WHS PROMASTER8 JUST GOT EASIER!

- Silent mode integration means fewer clicks
- No need to open SKPPro to upload cutting or cutting and engraving data
- Easier to use than ever before
- Automates your workflow, saves time

WHS have released an upgrade to ProMaster8 which allows direct communication to the new Silca Unocode F-Series machines via 'silent mode' operation of the SKPPro. This means you can click and transmit key cutting, or key cutting and engraving data to your Unocode F100, F800 or F900 with just a couple of clicks, making it simpler and faster than ever before.



*This is a FREE Upgrade for customers who have a current Maintenance agreement in place.*



Talk to your AM or ask our Technical Support team for more information.



**CLICK&COLLECT** Free pick-up from our branches

*Leave your keys in your pocket!*



## ROSÉ BIOMETRIC DIGITAL DOOR LOCK

**NEW**

The Rosé biometric digital door lock is a smart and innovative door handle solution that provides fast and secure access. Open the door between the garage and the house with your fingerprint or PIN code. Also perfectly suited to student accommodation rooms, storerooms and studies.

The solution includes a highly reliable biometric reader complemented with an electronic keypad. The Rosé can be installed left or right-handed, depending on your door; no need to specify the handing of the door. The Rosé comes complete with a high quality dormakaba 60mm backset tubular deadlatch for maximum security and reliability.

### Features:

- Keyless entry
- Operated by fingerprint or PINcode
- Non-handed
- Suitable for new installation or retrofit any 54mm lock hole
- Finish: silver or black



DKROSESIL

Rosé biometric digital door lock, silver



DKROSEMB

Rosé biometric digital door lock, matt black

# SALTO

inspired **access**

## SALTO XS4 ONE

Flexible, secure, and easy to install, the SALTO XS4 One electronic handleset needs no hard wiring and provides a networked electronic locking solution with a great range of features. Compatible with SALTO KS cloud-based access control system, it delivers real-time security that's easy for customers to use, manage and control.

What's more, it now comes in the new Dark Bronze finish! Matching many of today's architectural trends, it complements perfectly both white and dark doors, as well as sophisticated timber design elements.

**Available for ordering now.**



## RISCO WIRELESS PICCOLO 2-WAY PIR PET DETECTOR

The Piccolo PIR is a small and stylish motion detector for residential use. The innovative and clean design is ideal for end users, looking for a contemporary look and feel in their premises. The detector is compatible with both 1-way and 2-way wireless systems and is easy to install.

### Features:

- Coverage: 8m, 90°
- Pet immunity of up to 36 kg
- Dual element PIR
- Intelligent digital signal processing
- True temperature compensation
- Easy battery replacement by the end user
- Compatible with Agility as of version 5.17, and LightSYS as of version 5.80



*3 years  
battery life*



RWX96P43300A

## CREONE RELEASES KEYWIN6 IOT SOLUTION **CREONE**



To better enhance the performance of the Creone Key management solutions and streamline the setup process, Creone have moved their Keywin6 cloud-based solution to the Microsoft Azure IoT Platform.

By using this proven and secure platform, setup of a cabinet is now a plug-n-play solution utilising a unique pairing code. No software needs to be installed on site.

Key management has never been simpler with the new Creone IoT solution.



**FREE DELIVERY!\*** for all orders over \$150 \*Exclusions apply.



locking for life



ASSA ABLOY



## NEWS & EVENTS



# POSTPONED UNTIL 2022

MLAA 2021  
National Co  
& Trade Exp

21-23 October 2021  
JW Marriott Gold Coast Resort & Spa

KEY TO  
RECOVERY

SECURITY IN A POST-CORONA/PBS-WORLD



contact [marketing@lsc.com.au](mailto:marketing@lsc.com.au)  
to upload you logo if it does not appear

## GENERATE A BROCHURE WITH YOUR BUSINESS DETAILS

Let us to introduce you to Flyer  
Creator! Now you have the tools to  
produce a simple product flyer directly  
from our website from your dashboard.

This can be used to advertise products  
or to compliment a quote. Content is  
generated in seconds and output to PDF  
format.

For a step-by-step guide don't forget to  
check out our website How-to videos  
that highlight some of the features on  
the new site, we encourage you to view  
these quick, short videos online today.

ABC LOCKSMITHS

CONTACT DETAILS

Phone: 01 2322 3222  
Website: [www.lsc.com.au](http://www.lsc.com.au)  
Email: [info@lsc.com.au](mailto:info@lsc.com.au)  
Address: 140-150 D'Urville Street, North Melbourne VIC 3051

insert your flyer name here i.e. Upgrade your door hardware today with BRAVA

**BRAVA METRO STOREROOM KNOB 3062 70MM SS**

SALES PRICE **\$51.09**

BRAVA Metro EA3000 series commercial grade storeroom knobset 70 mm backset.

Successfully tested up to 4 hours (depending on type of dooset) on fire door assemblies in accordance with Australian Standard AS 1905.1-2005, Part 1: Fire Resistant Doorsets.

**Storeroom function**

- Outside knob always rigid, key retracts the latch.
- Inside knob free at all times.

**Additional info**

- Cylindrical fixing.
- Silica LWS profile if pin cylinder.
- Incorporates the popular PD 8221 barrel.
- Compatible with most restricted keying systems.
- Boised and colour coded.
- 2 keys supplied.
- Fire rated.
- Finished in satin stainless steel.

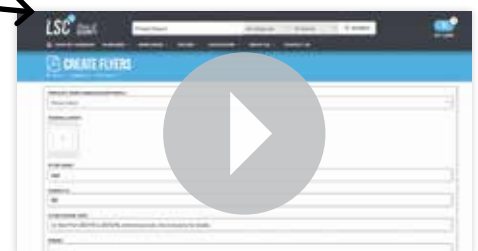
Door thickness	35-65mm
Backset	70mm
Max. Lever / knob projection (distances may not include thumb)	65.5mm
Stroke	16mm x 27mm x 1.2mm
Latch	70mm
Latch face plate	57mm x 25mm
Operator	140 profile
Door handing	Non-handed knob/levers
Rose	70mm

insert your footer text here i.e. Come to our showroom to see our full range of door hardware products

Sample Flyer

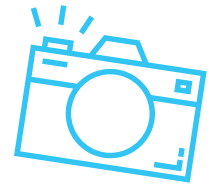


You can find the videos under  
Resources



Video  
Flyer Creator

# HAPPY CUSTOMERS



## SPL SECURITY (QLD)



Here we see Vince Ransom and Brett Golden with their new Silca Unocode F800.

## GEELONG LOCKSMITHS (VIC)



This happy snap was taken with Tom & Jon from Geelong locksmiths with a new Silca Futura Auto.

## INTEGRA LOCKSMITHS (VIC)



Dino from Integra Locksmiths in Shepparton has a new addition to his van – a Silca Futura Pro.

## WARRNAMBOOL LOCKSMITHS (VIC)



Ben from Warrnambool locksmiths is all smiles as he received 3 x Weber Family Q BBQ's by redeeming his points earned from our recent Rewards Program.

## DATA & VOICE SECURITY (SA)



Nathan Harrison from Data & Voice Security is pictured with Matt Ellis receiving his Weber Q from the recent Rewards Program. He's looking forward to cooking his team a BBQ when restrictions allow it.

## EASTERN SUBURBS LOCKSMITHS (VIC)



Jarrod from Eastern Suburbs Locksmiths is happy with their new additions - a Silca Bravo and Silca Futura Pro.

# Look for opportunities with these reduced touch products

*Help the community stop the spread*

-  Food distribution centres
-  Hospitals
-  Warehouses
-  Convenience stores
-  Service stations
-  Fast food
-  Manufacturing



Visit [lsc.com.au](http://lsc.com.au) for our comprehensive range of reduced touch products



**TERMS & CONDITIONS**

Product features and pricing in this newsletter are subject to change without notice. Special promotional prices advertised here are for the month the newsletter has been published. However, some offers may commence on or extend beyond the promotional period. Most products have been photographed in-house and are identical to what you will receive. Information presented in this newsletter has been checked and is believed to be correct at the time of printing, however, errors and omissions may occur. LSC can not guarantee prices, specifications, or features of products that may change after printing.