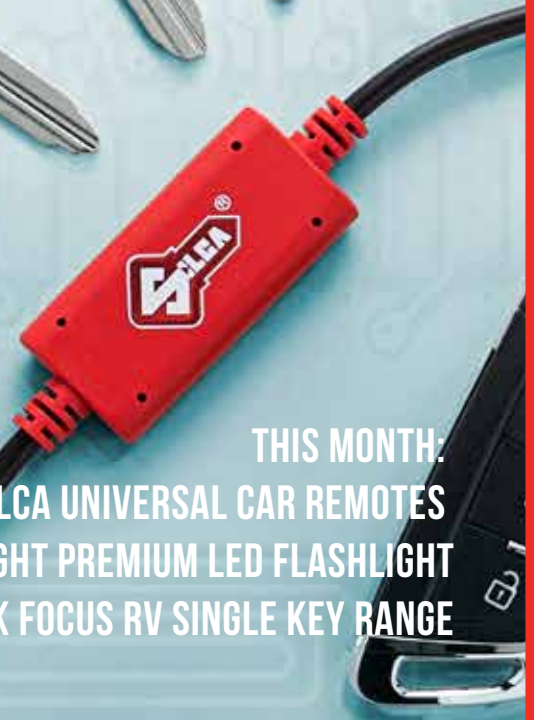


LSC

NEWSLETTER



LSC



August 2021 | Issue 457

THIS MONTH:
SILCA UNIVERSAL CAR REMOTES
NEW SECLIGHT PREMIUM LED FLASHLIGHT
LOCK FOCUS RV SINGLE KEY RANGE



Security Tech Germany

LOVE IT?
LOCK IT

PRECISION
GERMAN
ENGINEERING

NEW SECLIGHT PREMIUM LED FLASHLIGHT

New from ABUS is a premium range of Seclight LED torches, they are just the thing you need to find your way in the dark.

High-quality Cree white LED's provide powerful illumination with long runtime and high light intensity. ABUS's unique cuboid design make these torches practical as it can be put down anywhere without rolling off the table, bonnet or other smooth surfaces because of its square shaft.

ABUS Seclight LED torches feature adjustable power and zoom functions, strobe mode, and a red light function for night vision (TL517C & TL525C models). These torches are perfect for indoor and outdoor activities.

Supplied with storage pouch, nylon loop and premium batteries. Finished in horizon grey.



TL517C

- Lumen: 450
- Compact & lightweight, ideal for on-the-go.
- Suitable for the toolbox, bag or glove box.
- With red light great for night vision

TL525C

- Lumen: 500
- Compact & lightweight, ideal for travelling, car, toolbox.
- With red light great for night vision

TL530C

- Lumen: 900
- The heavyweight in terms of LED light performance.
- Perfect for when powerful light intensity is required both near & far range.

HIGH SECURITY PADLOCKS

- Chrome plated hardened steel lock body
- Silca LW5 keyway
- Double ball locking
- 83/55 & 83/60 SCEC approved for SL3 (must have approved keying system installed & be key retained)
- 83/80 SCEC approved for SL4 (must have approved keying system installed & be key retained)



83/55 SERIES



83/60 SERIES



83/80 SERIES



locking for life



BRAVA MATT BLACK RANGE



Urban Deadbolt
D3X92B

- LW4, (Rekeyable to 6 pin LW5)
- Adjustable 60/70mm backset



Urban Entrance Leverset
LEX900B

- LW4
- Adjustable 60/70mm backset



Urban Euro Cylinder
31705PHEBLK

- Fixed cam "emergency" cylinder
- LW4, 5 pin cylinder
- Keyed to differ



Rebate Kit
BREE034MB

- Suits BRAVA Urban and Metro range of locksets



BORG ECP LOCKS WITH KEY OVERRIDE

The BORG Easi-code Pro (ECP) Digital Lock Series can save you time and money, thanks to the innovative 'on-door' code change features, which requires no tools and can be completed in under 10 seconds. Enjoy the convenience of on door code change with the added benefit of key override. Give your customers the advantage today.



Digital Lock 2701 SC Knob

BL2701SCECP



Digital Lock 5701 MG Pro

BL5701MGPROECP



on door code change, no tools required!



Digital Lock 5701 SC

BL5701SCECP



2021 | 1ST FINALIST

PETER MONRO

SK LOCKSMITHS & SECURITY (QLD)



Please provide a short personal biography about yourself.

I was born in Brisbane and attended school here. As I got older I dropped out of high school as I was never a good student! I recall sitting on a friend's couch one day when I saw a newspaper article about a shortage of tradespeople in Brisbane, one of the trades mentioned was locksmithing.

I signed myself up for the prevocational locksmithing course. Once I attended the first couple of weeks I absolutely fell in love with the industry. I absorbed all the information the TAFE teachers imparted on me.

I struggled to find a company to take me on as an apprentice due to the Brisbane floods of 2011. So, I did what I considered to be the next best thing and got a job at Mister Minit being a Cobbler. I worked there for a couple of years while applying for apprenticeships.

I finished out my apprenticeship at a small business where I was the only locksmith. This had its advantages as I was thrown into the deep end. I feel that this has helped greatly in getting experience in a wide range of locksmithing skills. I worked there for about 5 years.

16 months ago I decided to start my own business as it's something I've always wanted to do. It has its challenges but I am proud to say that even during the Covid-19 pandemic I have been able to serve the public with close to 700 happy customers in that time.

What do you most enjoy about your work as a locksmith?

The constant learning. I don't think there has been a day in my career when I have not learned something new.

Day to day, my most enjoyable work is the puzzle aspect of locksmithing. I enjoy doing custom fits for customers where locks and hardware has to be modified in a unique way to solve a problem for a customer. Also, single pin picking, impressing and non-destructive entry of all kinds has always been a passion of mine.

I had the privilege this year of working with Ken Peterson from Peterson tools in the USA to produce a pick based on one of my designs to pick inline restricted profiles found in Australia. That was pretty cool!

What key issues do you think will affect the locksmith industry in the coming decade and how do you think these should be approached?

I think one of the issues we may face in the next decade is large hardware companies trying to swallow smaller trades and starting to provide installation services.

Some are providing cheap "lock installation services" and paying struggling young locksmiths a reduced fee to install a lock purchased at their hardware store. This is worrying to me as I think this country thrives on small business and healthy competition in order to keep the integrity of trades & industries.

Another issue is non-qualified locksmiths running a business and ripping customers off. Often they are preying on the vulnerability of someone being locked out at night to extort them out of a lot of money. I feel it damages the reputation of locksmiths in the eyes of these customers and the public that have been scammed.

How to approach both of these as an industry is a great question and one I do not know the answer to. However, I think locksmiths, suppliers and the industry as a whole coming together and regularly communicating with each other is the first step. Not much can be done by one person and coming together and communicating will not only help all of us by sharing information and knowledge but will also help our industry to galvanise & become more united.

Tell us why you should be Australia's best young locksmith.

I think I should be Australia's best young locksmith because I have dedicated a large portion of my life to this trade and have no plans on stopping anytime soon!

Next year I will be returning to TAFE to learn more about safes and trying to improve my skills as a locksmith. I have plans in the future to hire an apprentice and hope to share the knowledge that I received from mentors onto a new generation. I think it is our duty as qualified security professionals to provide the absolute best customer service to the public to ensure the safety of the community. This can only be done if we have dedicated professionals that never stop growing and I always strive to be one of those people.

Sponsored by:



A family owned Australian business since 1926

PRODUCT SPOTLIGHT

KEY-BAK SUPER 48 SERIES



When you just can't lose your keys. The Key-Bak Super 48 series is the self-retracting key reel for industrial use that many have tried to copy, but just can't match the original and best.

Described as 'the key retractor you should use when losing your keys might mean losing your job', the Key-Bak Super 48 comes with a Kevlar® cable, high impact polycarbonate case and a range of belt and attachment options.

Made in USA and backed by a lifetime service policy



Proven to last over 1 million cycles!

KBS48PLUS



Protection Rating: IP66



ATR2EHMFB

THIN AND MODERN READER PROFILE

The ATR2EHMFB ATLAS Reader is designed with a thin profile and modern appearance. It can read 125KHz EM & HID, and 13.56MHz Cards/Fobs. The reader is IP66 so can be installed either indoors or outdoors, has a read range of up to 7cm and can be operated with a voltage range of 9 – 24V DC.

Features:

- Card Type: 125KHz - EM & HID Cards/Fobs
- 13.56MHz - Mifare Card/Fob (ISO 14443A compatible)
- Read Range: Up to 7cm
- Dimension: (L) 120 x (W) 48 x (H) 20 mm

60MM DOOR FRAME REINFORCEMENT KIT



Properly securing double leaf aluminium 'shopfront' type doors can be tricky when egress is required. With factory break-ins on the rise, we've got an easy to install solution. The Striker Products door frame reinforcement kit features a special stainless steel bolt and plate set that engages the hook bolt, dramatically reducing the ease in which these doors are pried open, while maintaining the lever-egress function.

- Boosts security and strength on narrow stile aluminium doors prior to break-in
- Stainless Steel, Australian Made, 60mm and 120mm thickness version available

2761624100 Door frame reinforcement kit 60mm bolt

2761624200 Door frame reinforcement kit 120mm bolt



Replaces broken strikes and covers damage on narrow stile aluminium doors!



FREE DELIVERY!* for all orders over \$150 *Exclusions apply.





NEW SILCA SHELLS AND NEW LOOKALIKE

suit BMW



Silca Shell 3 Button HU92

SHU92ARS8

suit Ford



Silca Shell 3 Button HU101

SHU101DRS8

suit Land Rover



Silca Shell 5 Button HU188

SHU188RS11

suit Ford



Silca Rubber Pad 3 Button

SHURSF8

suit Kia



Silca Shell 3 Button KIA8

SKIA8CRS8

suit Kia/Hyundai



Silca Rubber Pad 3 Button

SKIARS8

suit Renault



Silca Shell 2 Button VA150

SVA150RS2

suit Renault



Silca Shell 4 Button VA150

SVA150RS7

5 blade profiles included

ID49-1E



Auto 3 Button Flip Blade Remote

SRNN01R11

TECHED

NOW ONLINE

AEE 101 INTRO TO BASIC EEPROM

- ✓ Convenient Self-paced learning
- ✓ Savings by way of not having to attend a specific venue or take time away from business
- ✓ High quality learning material compiled by recognised industry experts in this field
- ✓ A rich mix of theory, narrated demonstration videos and animations
- ✓ In built assessments to gauge learning and understanding of subject matter





AFTERMARKET KEYS

suit 2018+
Mazda



BDS Emergency Blade

5341177263

suit Ford Transit
2016+, ID49



BDS 3 Button Flip Key

5341177264

suit Subaru
ID62



BDS 3 Button Key

5341177265

suit VW MQB
ID88



BDS Transponder Only

5341177266



Console proximity antenna

VEHICLE: 2010 TOYOTA LANDCRUISER

Job: Program spare proximity key

Symptom: Vehicle would not accept new key. Only one ‘beep’ sound from car when new key was presented at the start button. Key was OEM and correct part for this particular model, new battery and unlocked. Suspected another issue.

Solution: Checked to see if console proximity antenna was disconnected, sure enough it had been during a service and never plugged back in. Once reconnected key programmed with no issue.

Explanation: Toyota Proximity keys contain two separate memory devices. One controls the physical DST80 (in this case) transponder and the other controls the RKE (Remote Keyless Entry) and Proximity functions. When programming keys, the Transponder functions are detected and programmed at the coil around the start button, not dissimilar to a standard keyed ignition. This is the first “Beep” that emits from the vehicle when it is detected. The RKE and Proximity functions are programmed via a particular keyless antenna in the front console, when detected this is the second “Beep” that can be heard from the vehicle. This was not happening, suggesting that the problem could be: Flat/no battery in remote, incorrect key, key locked to another vehicle or that the console antenna (located under the gear stick trim) was disconnected or faulty.

There are 3 or 4 interior Proximity antennas in the vehicle and providing that at least one is detecting the proximity key, the engine can start. However during key programming ONLY the front console antenna is used. This is why the owner would have never noticed this had been disconnected during a previous service, until a new key was to be added.

Upcoming new software on Smart Pro will actually detect and inform the user of these conditions and advise accordingly.

Richard Hoares TSU Team



CLICK&COLLECT Free pick-up from our branches



New Universal Remotes from Silca Now Available

The new Silca universal automotive remotes are ideal for both all keys lost and spare key situations. This new universal remote provides the locksmith with a solution that is low cost and high profit margin without sacrificing quality and reliability.

At this time, the range is available in 4 different aesthetically pleasing designs those being BMW, Hyundai / Kia, PSA & Volkswagen lookalike. The remotes can be supplied without transponder which allows for cloning and or diagnostic programming with a transponder of choice. Additionally, remotes may be purchased with an integrated HITAG transponder for situations where transponder and remote program at same time.

The remotes are preset by way of a remote programming cable connected to an android device. The MySilca SRP android app driving the preset process is a free download from the Google Play Store.

Why Silca Universal SRP remotes?

- Extensive vehicle coverage in local market
- Quality remote fob
- Quality flip blade
- Superior smart phone app with brand and model year association
- Product warranty
- Tested locally
- Stock on hand



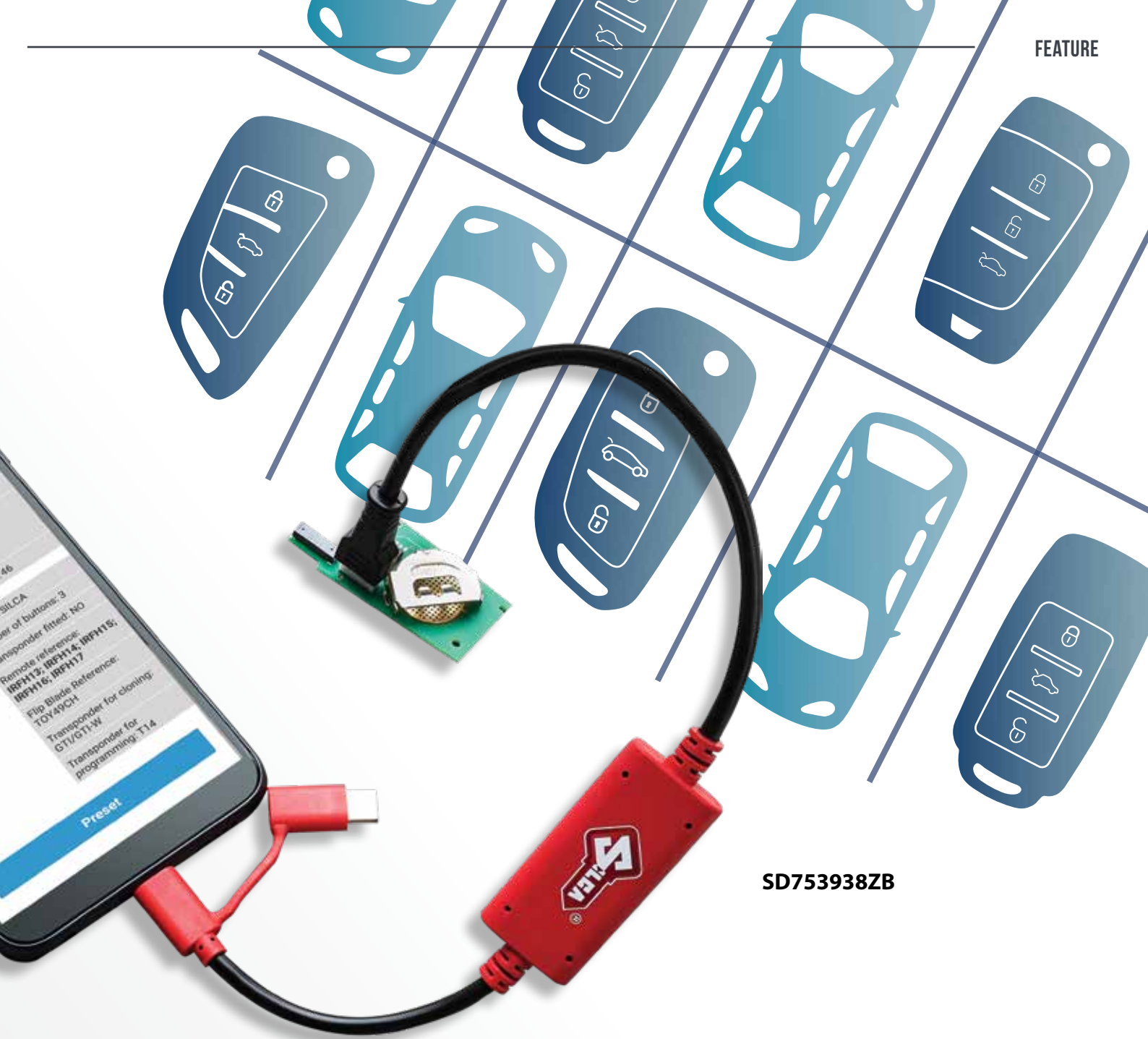
The MySilca SRP free download from the Google Play Store!



SIRFH13 / SIRFH13T



SIRFH14 /



SD753938ZB



SIRFH14T



SIRFH15 / SIRFH15T



SIRFH16 / SIRFH16T



Coronavirus

Offer your customers a range of reduced touch products

Stay vigilant on Covid | **safeguard touch points in your business**

CORONAVIRUS
PROTECT YOURSELF & OTHERS



 Purehold



 SALTO
inspired access



 Neptune
Security Products



 StepNpull
Australia



 BDS



 SILCA



 verroo



RV SINGLE KEY RANGE

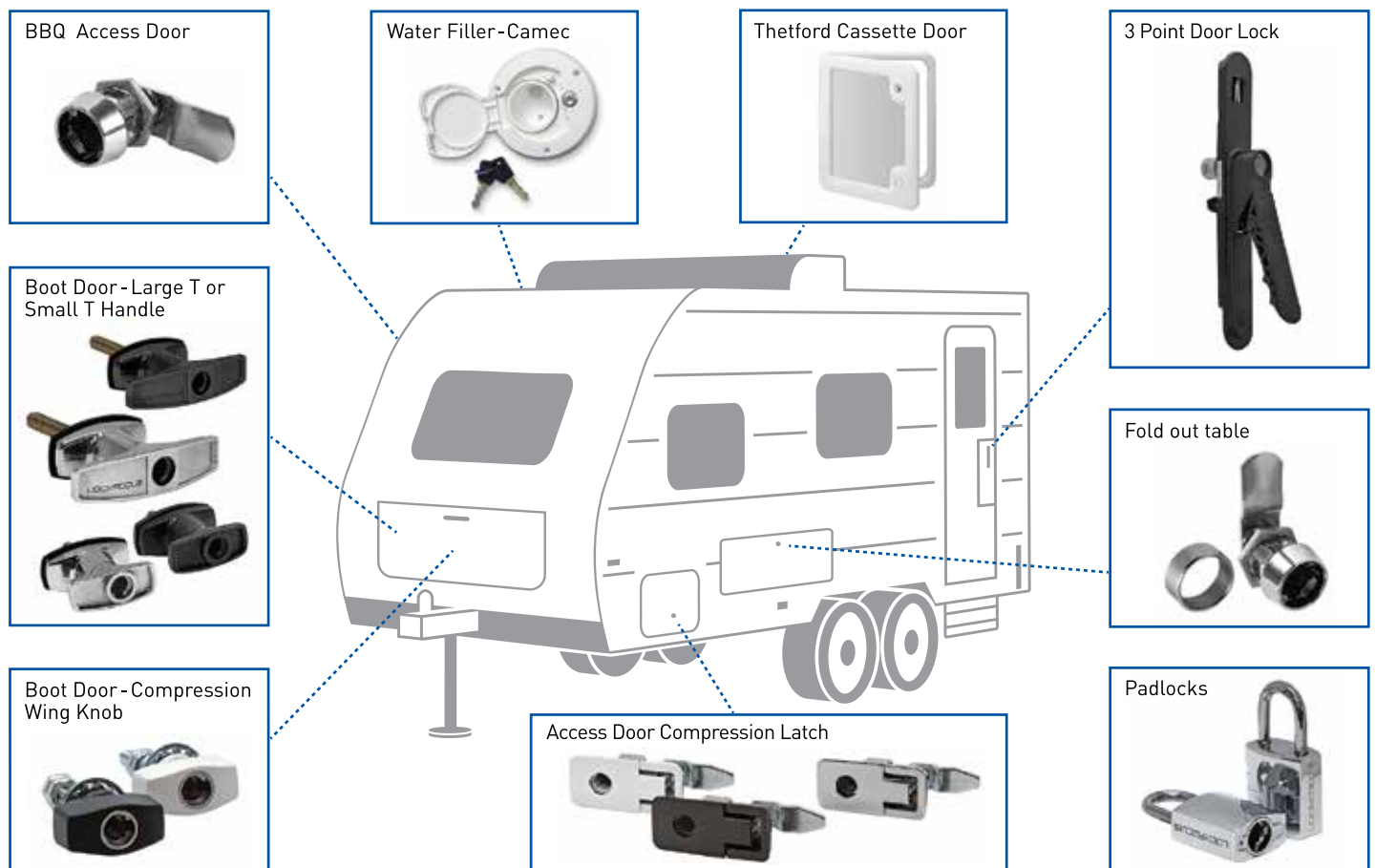
Caravan and RV vehicles have a variety of doors, hatches and outlets that are fitted with different locks and ultimately different keys. Lock focus provides a key solution that allows you to remove the need for multiple keys and operate all these locks with the one key.



**Lock Focus RV & Caravan
complete range display**
07358200

- Supplied less cylinder with cam, making it ideal to add to an existing master key system
- All keyed alike cylinder clamshell packs supplied within range
- A barrel service kit is required to key alike T handles to other barrels

* (Does not include board)



All locks in this range are also available individually – please ask your local Sales team for more information.



CLICK&COLLECT Free pick-up from our branches

dormakaba KES900

Pre-load Monitored Electric Strikes

The KES900 electric strike with pre-load feature is capable of releasing with up to 35kgs of pressure on the latch. Commonly caused by air pressurisation, doors that might have dropped or warped or the addition of door seals.

Choosing dormakaba pre-load strikes gives you peace of mind on your installations in reducing possible instances of call backs due to environmental changes.

KES900Z (zinc housing & keeper)

- Monitored
- 35kg preload capacity
- 680kg holding force
- 12v / 24v power
- Fail safe / fail secure field changeable
- Pre drilled for lip extensions

KES900S (stainless steel housing & keeper)

- Monitored
- 35kg preload capacity
- 1000kg holding force
- Fire rated
- 12v / 24v power
- Fail safe / fail secure field changeable
- Pre drilled for lip extensions



Lip extension accessories available



KESLP125
25mm extension



KESLP150
50mm extension

SMART 8" TOUCHSCREEN KEYPAD



RP432KPT000A

RisControl is a responsive, high resolution touchscreen keypad, offering an intuitive easy to use interface. With RisControl the user can control all alarm and cloud-based solutions from RISCO Group from one access point. With a clear overview of the system status, easy arm/disarm functionality and the option to view live video and recordings from the VUpoint Video Solution.

Features

- Convenient access of keypad functions for a smart user experience
- Customisable user interface, easy to use
- View live video and recordings by VUpoint Video Solution
- Detachable connector for easy wiring
- Automated Software updates via Wi-Fi
- Grade 3 certified



NOW AVAILABLE

NEW RISCO VUPOINT 2MP WI-FI CAMERAS

LSC Security Supplies have stock of 2 new models of RISCO VUpoint 2MP Wi-Fi cameras. The Wi-Fi cameras are a quick and easy solution to add HD video verification to your RISCO alarm system. They connect directly to the RISCO cloud using the Wi-Fi network, and using the intuitive iRISCO App, users can experience real-time viewing of the cameras and playback of video in the event of an alarm activation. The VUpoint solution is a seamless integrated HD video solution and a must for any alarm installer.

Installing video & alarm? RISCO's integrated solution is your best choice.



2MP Bullet Camera

RVCM52W1400A



2MP Dome Camera

RVCM32W1600A



FREE DELIVERY!* for all orders over \$150 *Exclusions apply.



locking for life



ASSA ABLOY



ADVANCED DIAGNOSTICS



NEWS & EVENTS



MLAA 2021 National Conference & Trade Expo

21-23 October 2021
JW Marriott Gold Coast Resort & Spa



KEY TO RECOVERY

SECURITY IN A POST-CORONAVIRUS WORLD



LSC's new e-commerce website enables Security professionals to view and order from over 18,800 products online. We continue to grow our range and expand our website functions to further streamline the shopping process for our customers. We've produced some How-to videos that highlight some of the features on the new site, we encourage you to view these quick, short videos online today.



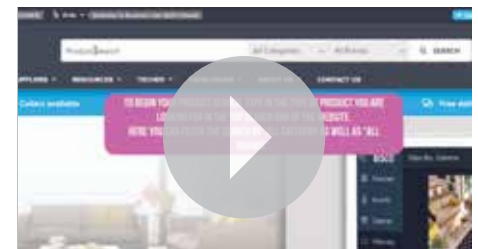
You can find the videos under
Resources



Video #1
Registration



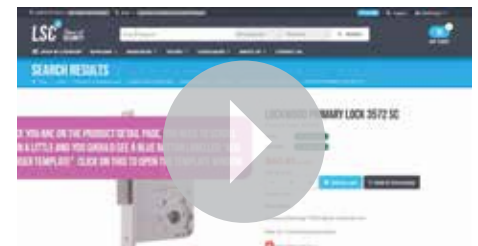
Video #2
Updating my preferences



Video #3
Product search and filtering

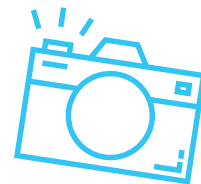


Video #4
Generate a price book



Video #5
Order templates

HAPPY CUSTOMERS



ABLE LOCKSMITHS (QLD)



Jordan from Able Locksmiths with their new addition of the Silca Triax Pro, incorporating the R13 auto rotating clamp for cutting Kaba Expert.

ACTIVE 24/7 LOCKSMITHS (NSW)



Sam from Active 247 Locksmiths is pictured with his new addition to his work van, the Silca Futura Pro.

ON THE SPOT LOCKSMITHS (SA)



Chris Lodge from On The Spot Locksmiths, pictured with their new Triax Pro - the latest addition to their already impressive suite of Silca Key Machines.

SALISBURY LOCKSMITHS (SA)



Adam from Salisbury Locksmiths standing by as their new Unocode F800 smashes out a large run of restricted keys – cut and engraved!

TCL SECURITY (QLD)



Simon Hubbard from TCL Security in Far North QLD is pictured with his new Silca Unocode Ff900.

THE SKELETON KEY TAMWORTH (NSW)



Matthew from The Skeleton Key, Tamworth was happy we could take a snap with him pictured beside his Futura Auto and Futura Edge machines.



ASSA ABLOY



0011K1MBKDP

NERO® COLLECTION

001 Double Cylinder Deadlatch

The Lockwood 001 double cylinder deadlatch in new matt black. The new matt black 001 is a part of the Nero Collection and can be used with other members of the collection.

Features:

- Cut-resistant stainless steel bolt
- 11 concealed anchorage points and a door frame strengthener that combine to offer high security protection
- Patented LockAlert® and SafetyRelease™ functions



005B1CP



005B1SC



005B1SSDP

THE PARADIGM®

005 Double Cylinder Deadbolt

The Paradigm® 005 Double Cylinder Deadbolt is the premium security solution with its innovative safety features. The contemporary styling can be combined with any lever or entrance handle to create an elegant security solution, ideal for residential and architectural applications.

Features:

- High security cut resistant stainless steel bolt
- Anti-Corrosion- Successfully tested in accordance with AS2332.3.1:2001
- Patented LockAlert®, SafetyRelease™ and Kinetic Defence® functions
- 2 keys included

TERMS & CONDITIONS

Product features and pricing in this newsletter are subject to change without notice. Special promotional prices advertised here are for the month the newsletter has been published. However, some offers may commence on or extend beyond the promotional period. Most products have been photographed in-house and are identical to what you will receive. Information presented in this newsletter has been checked and is believed to be correct at the time of printing, however, errors and omissions may occur. LSC can not guarantee prices, specifications, or features of products that may change after printing.