

LSC

NEWSLETTER



July 2020 | Issue 444

THIS MONTH:
WIDE RANGE OF REDUCED TOUCH PRODUCTS
REOPEN YOUR BUSINESS SAFELY WITH DAHUA
ABUS PADLOCK LOCKING SOLUTIONS



Security Tech Germany

PADLOCK LOCKING SOLUTIONS

ABUS has a very wide range of padlocks for home, business & industry. The ABUS 74 Safety Series and the ABUS 72 Versatile Series are two stand outs, with multiple colour, shackle and keying options available.

ABUS 74 Series Safety Padlocks

- Special keyway (WB25L) - 6 pin
- Supplied keyed to differ (KD)
- Key retaining - the key cannot be removed unless the shackle is closed
- Solid aluminium core
- Nano-Protect™ shackle for superior corrosion resistance
- Body and shackle insulated against electric shock
- Automatic locking - shackle can be snap shut
- Supplied with notification stickers
- Available colours: Blue, Red, Orange, Black, Brown, Green, Grey, Purple, White, Yellow.



7440BLUKD



7440REDKD



7440ORGKD

ABUS 72 Series Aluminium Padlocks

- Supplied keyed to differ
- High quality colour anodised 40 mm aluminium body
- Interchangeable with ALC 5 pin and 6 pin cylinder assemblies
- 27 mm hardened steel shackle with Nano-Protect™ plating 6.5 mm shackle diameter
- Both genuine Abus (7240KB) and Silca alternative (AB3) keyblanks available
- Available colours: Black, Blue, Green, Orange, Purple, Red, Yellow and Titanium



7240RED



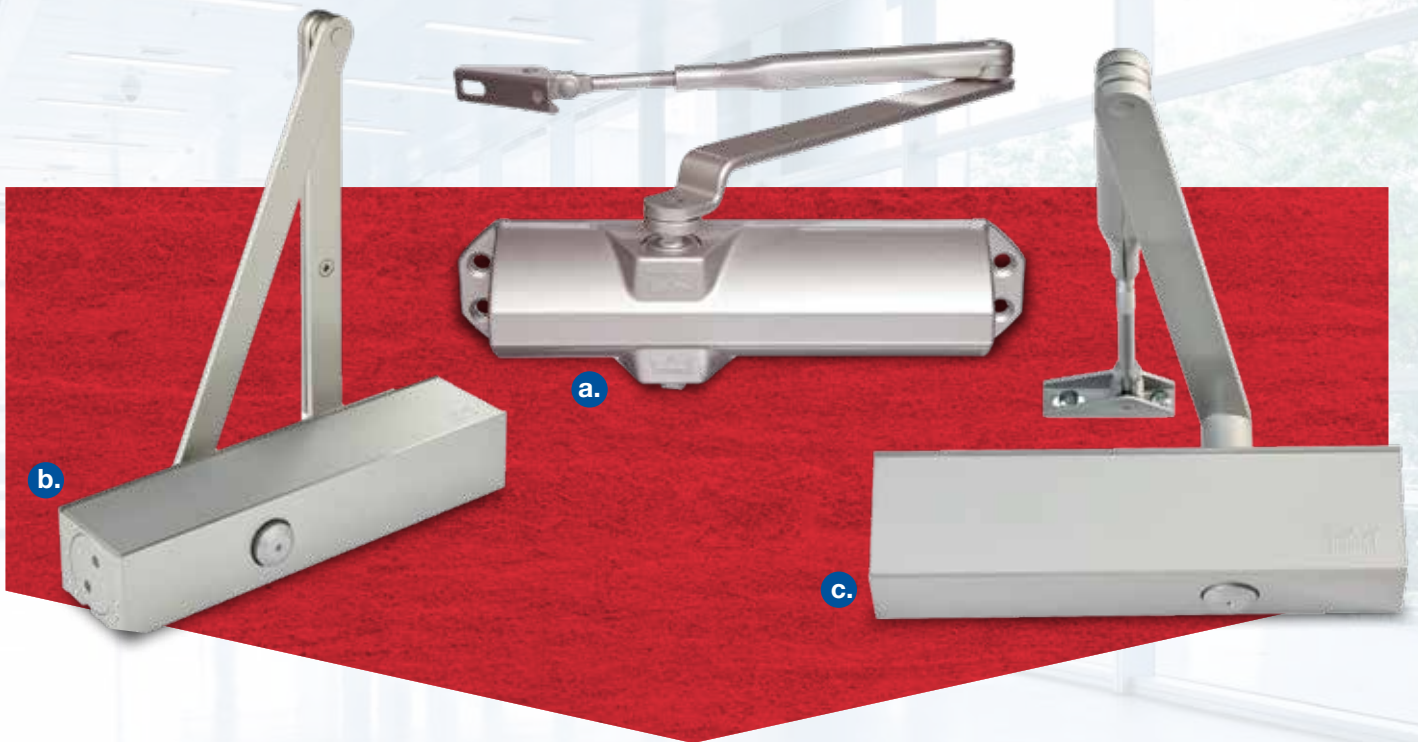
7240GRN

Rekeyable & Master keyable

Multiple shackle materials and sizes available



Ideal for office buildings or private homes!



a. TS68 EN2-4 Door Closer
DOTS6800SIL

b. TS83 EN3-6 Door Closer
DOTS8300SIL

c. TS73 EN 1-4 Door Closer
DOTS7300SIL



dormakaba Door Closers

Whether for private homes or contemporary office buildings, door closer systems from dormakaba are intelligent, integrated access solutions that combine consistency, convenience, design and premium quality. The wide-ranging product portfolio satisfies a broad spectrum of functional requirements and thus offers solutions for almost any individual door situation.



locking for life



QUALITY BRAVA EURO STYLE CYLINDERS DOMESTIC & COMMERCIAL

BRAVA Matt Black Euro Cylinder & Turn 5 pin 31705PHBLKCT

- Overall length 90 mm including turn
- Rekeyable via 2 mm allen key
- Supplied with 2 keys
- Finished in anodised matt black

Fixed cam LW4, 5 pin cylinder with turn KD



BRAVA has the most comprehensive range of Euro style cylinders for the professional Locksmith market. BRAVA Metro 90555 Series cylinders supplied KD 6pin LW5 & Less Plug for inline Restricted. BRAVA Urban Euro cylinders LW4 & LW5 available in SC. CP, PB & Matt Black. Also the BRAVA Urban Tr-Lock in LW5, All BRAVA Metro & Urban cylinders are easily rekeyable.

BRAVA Metro Euro Cylinders BRM905551CP

- Fixed cam
- 6 pin double euro cylinder.
- Supplied keyed to differ with 2 keys
- Removable cap for easy keying or rekeying
- LW5 profile
- Finished in chrome plate



Compatible to most inline restricted keying systems (using 95551 barrels)

Precision Tri-Lock Replacement Cylinders BRUTRILOCKLW5CP

- LW5 profile 6 pin cylinder
- Stainless steel grub screws
- Overall length 71 mm
- Supplied with silver cams
- Supplied KD with 2 keys
- Supplied boxed and bar-coded
- Finished in chrome plate

Suits Gainsborough Trilock 890



Just the Thing for Thicker Doors 31905PHESCKD

- Fixed cam "emergency" cylinder
- LW4, 5 pin cylinder. KD
- Overall length 90 mm
- Rekeyable via 2 mm allen key
- Supplied with 2 key
- Finished in satin chrome



PRODUCT SPOTLIGHT

ABUS DUAL LED TORCH

The ABUS dual LED pen torch with magnetic base and aircraft grade aluminium body.

- Main light positioned on the side of the torch with COB beam emitting 500 lumens – dimmable to 300 and 100 lumens
- Spotlight on the top of the torch with 200 lumens – dimmable to 80 lumens
- Strong neodymium magnet in torch base for attaching the torch to metallic objects
- 3 x AAA batteries required
- Maximum beam range 56 meters
- Supplied display packed

Running time of up to 10 hours!



TL500C



Purehold



PSPUSH2

PUREHOLD "ANTIBACTERIAL PUSH PLATE"

For use alongside the Purehold PRO and Purehold PULL, the Purehold PUSH is a self-cleaning antibacterial door push plate for use on the push side of the door.

Using silver technology, the coating combats pathogens deposited onto the surface by users and then works continuously, 24/7. Aimed at reducing cross-contamination from one user to the next, the Purehold PUSH plate is easily installed in under 30 seconds.

Pack Contains:

- 1 x Back Plate (fixes permanently to door).
- 1 x Front Panel (replace every 12 months)

AVOID TOUCHING UNCLEAN SURFACES

Use this handy tool to open doors without having to touch them. Includes a key ring so you can carry it with you wherever you go and as a bonus, includes a bottle opener.

- Avoid cross contamination of unclean surfaces
- Used for Pull doors open or lever handle furniture & pressing elevator/pedestrian/ATM buttons
- Bonus bottle opener built in
- 3 mm Stainless Steel
- Australian Made & designed



BDSO1



FREE DELIVERY!* for all orders over \$150 *Exclusions apply.

LSC

TAFE VISIT

Martin McGovern attended SkillsTech TAFE Queensland to discuss all matters automotive with 3rd year apprentices. Students had the opportunity to get hands on with diagnostic key programming utilising the Smart Pro. Students also completed basic EEPROM exercise utilising Orange5 and Tango.



ADVANCED DIAGNOSTICS



Renault Key Programming Enhancement

- Advanced Diagnostics have announced the enhancement of ADS2287 Renault key programming
- Covers both bladed and proximity configurations on select vehicles
- Bypasses PIN Code
- Smart Aerial required for precoding aftermarket keys
- Refer website for exact applications

World First in SECURELY programming keys in an all keys lost situation.

Renault Lookalike Remote Key SVA2R01

- Silca quality 3 button remote integrated flip key to suit various Renault models up to 2017
- Includes VA2 flip blade
- ID46 / 433
- Programmable with Smart Pro or similar



SMART Fortwo Lookalike Remote Key SVA2AR13

- Silca quality 3 button integrated fixed blade key to suit Smart Fortwo
- Includes VA2 blade
- ID46 / 433
- Programmable with Smart Pro or similar



END OF FINANCIAL YEAR DEALS EXTENDED!



ADVANCED DIAGNOSTICS



Purchase a new SMART
Pro + SMART Aerial and
receive a 25 Token Pack

SMART Aerial
ADC242 *Key not included

SMART Pro™ Programmer
SD846799AD



SD751863AD



SD751862AD



SD751762AD

TOKEN DEALS INCLUDE FREE BONUS TOKENS

Buy 50 Token Pack and **get extra 5 FREE Tokens**
Buy 100 Token Pack and **get extra 15 FREE Tokens**
Buy 250 Token Pack and **get extra 30 FREE Tokens**



SOFTWARE DEALS

Buy 3 Softwares and **receive 20% off**
Visit www.lsc.com.au to see complete range.

*Speak to your account manager or your local branch sales team for further information.



CLICK&COLLECT Free pick-up from our branches

LSC

REDUCED TO

must have

Help your customers create a Covid-19 safer world with our big range of Reduced Touch products.

Anyone owning or managing a commercial building now has an obligation to review their site and consider risks to themselves, their employees and their customers from touchpoints.



PSLEVERRTD

Lever Antibacterial Door Handle Cover

Using silver technology, the coating combats pathogens deposited onto the surface by users and then works continuously, 24/7. Aimed at reducing cross-contamination from one user to the next, the Purehold LEVER is easily installed onto door handles by simply "snapping" into place in under 30 seconds. Fits most common lever handles (please visit lsc.com.au to confirm compatibility)

- Proven in the lab to kill 99.9% of bacteria, using silver technology embedded into handle surface (independently tested to ISO 22196)



PSHH001

Pro Gel Dispensing Hygiene Handle

Purehold PRO gel-dispensing hygiene handles use a virucidal gel (tested to EN14476) that has 80% alcohol content which has been proven against viruses similar to Covid-19.

- Strong stainless steel frame (compliant with BS 8424)
- Independent tests prove the Hygiene Handle to be 98.5% cleaner than a standard door handle



SNPBLK

Foot Pull Door Opener [Black]

StepNpull® is a foot operated door opener that works on any non-latching commercial wood or metal door. Available in silver and black finishes.

- Reduce the spread of germs & prevent cross-contamination as far as reasonably practicable
- Provide a safe workplace
- Provide a better customer experience
- Open the door when your hands are full
- Proven and trusted for over 13 years



NENA

Touchless A NC/C, LED E

Neptune touchless with IR sensor and

- Contact rating
- Power: 12-24V
- Output contact
- Mechanical tested
- Detection range

TOUCH RANGE

products!



Public and high-traffic sites may have an additional need to monitor body temperatures or count the number of people coming into a public space like a shop.

Doors are major touchpoints, so we've got a range of gear to help you automate the opening of it, reduce the need to touch it, or touch it in a Covid-19 safer way.



ptune
ity Products



dahua
TECHNOLOGY

verroo

CLBD

SAVZ1107

DHTHERMALKIT3

38000NBK03N

NSI, NO/ Exit button

ess exit button
and LED indicator.

ng: 3A/12-24V
4VDC
act: NO/NC/COM
life: 100,000

ange: 8cm

Air 4 Home Remote Controller

The Silca Air4 Home is a wireless, battery operated, Bluetooth enabled module that will bridge the gap between your smartphone and your existing garage door or gate.

The battery powered device is an emulator for the original remote. Then you pair to this device from the Silca Air4 Home app on your smartphone and can share accesses via SMS, Email, Whatsapp and so on.

- No wires, no internet, no wifi, no power needed
- Administrator can give up to 21 accesses

Temperature Monitoring Terminal Kit

Designed to help manage access through contactless access control Facial Recognition (FR) technology with the added feature of accurately monitoring human body temperature using thermal camera.

The Dahua Temperature Solution measures the body temperature using a non-contact precision thermal camera with a measurement rate of up to 3 people per second, the system can handle high flow rates of people through your access controlled areas.

Smart Mortice Strike, 30 Users

The Verroo smart range of locking devices has been designed with security, flexibility and convenience in mind. Utilising Bluetooth technology with AES128 encryption you can be sure when communicating and sharing access to your Verroo, you are doing so securely and with zero web presence. Administrator can give up to 21 accesses

- Controlled by the Verroo App
- 3 Access levels, Owner, Admin and Normal
- Up to 30 users
- Timed access eKeys



FREE DELIVERY!* for all orders over \$150 *Exclusions apply.

LSC



ADI LOCKING BARS

ADI locking bars are suitable for use in industrial and commercial buildings, institutions, clubs, schools, hospitals, hotels and similar buildings. These high security multi-point locking devices can be mounted horizontally to any solid core door.



ADI Bar Locking with Internal Lever Only

ADILB702LH (Left Hand Locking)

ADILB702RH (Right Hand Locking)

- Heavy duty bolt through fixings.
- Indicating window turns red when unlocked.
- Suitable for timber and metal frame applications.
- Available in 3 sizes.



ADI Bar Locking with Internal/External Lever & Cylinder

ADILB7021LH (Left Hand Locking)

ADILB7021RH (Right Hand Locking)

- Opens with single action lever handle inside.
- Cylinder locks & unlocks outside lever.
- Suits 201 cylinder (not included).
- Available in 3 sizes.

SecuRAM

SECURAM BASIC AND RELIABLE

Securam SafeLogic and ScanLogic basic safe lock range. Ideal for home or office simple and easy to use with long battery life.



SafeLogic Basic 0601 & SwingBolt

SECEL0601SLSW

- 5 minute penalty lockout upon entry of 4 incorrect codes.
- Reset button to set the lock back to factory default



ScanLogic Basic 0601 & SwingBolt (Biometric)

SECSANBSW

- Enrol up to 15 fingerprints.
- Audible and visual indicators make programming easy.



SafeLogic Basic D-Drive & D-Drive Deadbolt

SECDL1701SLDD

- Unique no-twist cable design.
- Enable and disable user codes.



RECEIVE IMPORTANT PROMASTER8 UPDATE INFORMATION AUTOMATICALLY

Make sure you stay up to date with all of the new features and functionality that's being released in ProMaster8 by subscribing to the automated update notification service WH-Software run.

Customers are often unaware of new, useful, interesting and highly beneficial functionality enhancements that are regularly made to ProMaster8.

You can subscribe to a free, non-Spam notification service by sending an email to notify@whsoftware.com – in the subject line just write SUBSCRIBE PM8.

The update notifications are limited in quantity, and will advise of important updates that add or enhance features only, or address critical functionality improvements. We promise there will be no spam!



MECHANICAL DIGITAL CAM LOCK ECP

The BORG Digital Cam Lock with ECP (On door code change) has proven to be a very handy solution for locking cabinets, lockers, cupboards and even drawers. Featuring a smaller footprint keypad with Easi-Code Pro code changing, making it an easy install on new or existing cabinets or cupboards. Install onto lockers, cabinets, key cabinets, cupboards or joinery. Simple and easy to use, give your customers a keyless option.

Digital Lock Cam Lock

BL1006SCECP

- Fully mechanical digital cam lock
- Non handed (suits left & right doors)
- Easy to install
- ECP (on door code change)
- For timber or metal doors (suits door thickness up to 25mm thick)
- Supplied with two cams & mounting hardware
- Suitable for internal use
- Finished in satin chrome

New Key override model coming soon!



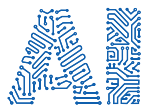
CLICK & COLLECT Free pick-up from our branches



Reopen Your Business Safely

Business Solutions from Dahua Technology

Dahua Retail Flow Control Solution - single entrance kit



Offer your customers accurate, real-time occupancy monitoring with the Dahua Retail Flow Control system. Powered by a custom configured Dahua AI camera, the system automatically counts people entering and leaving a single entrance. An alert or alarm can be set to trigger if a person attempts to enter the space once the individually configured maximum threshold has been reached.

The screen overlay on the monitor provides an easy-to-read live status of the current in / out counts. A siren or strobe can also be configured through the alarm output on the camera to provide an alert should the threshold count be exceeded.

This system alleviates the need to have a staff member stationed at an entrance for counting purposes, making it an attractive solution for a wide range of businesses that need to restrict the flow of visitors for distancing purposes.

Part code: DHFLOWCTRLKIT1



Reduce staff required for people counting

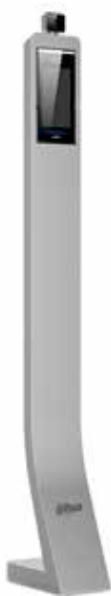


Trigger alarm when maximum capacity is exceeded



Single entrance solution

Dahua Temperature Monitoring and face recognition stand alone terminal kit



Designed to help manage access through contactless access control Facial Recognition (FR) technology with the added feature of accurately monitoring human body temperature using a thermal camera.

The Dahua Temperature Solution measures the body temperature using a non-contact precision thermal camera with a measurement rate of up to 3 people per second, the system can handle high flow rates of people through your access controlled areas.

Compared to the traditional methods of on-site body temperature measurement, using a Dahua Thermal Solution can significantly improve speed and accuracy, and at the same time, help reduce cross-infection by using non-contact technologies.

Part code: DHTHERMALKIT3



Supports mask detection



Trigger alarm when anomaly temperature is detected



Facial recognition distance 0.3 m–2.0 m

NEW

CREONE VALUEBOX CONTROL

The New Creone ValueBox Control enables staff and organisations to simplify administration and improve security for sensitive or expensive equipment and personal belongings. Its updated design is customisable and now makes it possible to store bags, laptops, projectors, cameras, and other large items within the one ValueBox solution.

The ValueBox Control is managed through the new KeyWin 6 Web Hosted service allowing control of your key management and valuable management through one simple to use platform and means it can also be accessed from any PC, Mac, and Tablet worldwide.

Part code: CR141370 (Main cabinet only)



Speak to your LSC representative to discuss your customised ValueBox solution



NEW

LATCHING "DURESS" RED MUSHROOM BUTTON



Thanks to market feedback, Neptune Security Products has added the Latching "DURESS" Red Mushroom Button to their already extensive range of exit buttons. The plate is made from 304 grade stainless steel and the latching mechanism has been extensively tested.

Features:

- Contact rating: 5A/125-250VAC
- Mushroom diameter: 37 mm
- Output contact: NO/NC/COM
- Mechanical life: 100,000 tested
- Operating temp: -20°C~+55°C
- Operating humidity: 0-95%(relative humidity)
- Installation diameter: 37 x 37 mm
- Fixing centres: 83 mm
- Dimensions: 115 (L) x 70 (W) x 38 mm (D)
- Weight: 0.2kg

NEDLANCBMR



FREE DELIVERY!* for all orders over \$150 *Exclusions apply.



Security Tech Germany

SALTO
inspired access



locking for life

dormakaba



ASSA ABLOY



Neptune
Security Products

**ADVANCED
DIAGNOSTICS**

ADI
lockwise



A MESSAGE TO OUR CUSTOMERS

As I've been talking to customers and our team about the last few months, a few things come up again and again that I think are worth reflecting on and sharing.

Covid-19 has forced nearly every business and industry to adapt and change, and we're included. The lockdowns that were forced upon us (and thankfully seem to have had the desired effect, despite the economic damage) made us accelerate our use of technology. And wow, did we have the pedal to the metal. LSC, like many companies, had dabbled with video conferencing, but it wasn't the norm. Overnight, we had to do it – and we've (mostly) got used to it. Our team are using a big variety of platforms to stay in touch with each other, with suppliers, and with customers. We've learnt to Skype, Zoom, Team, Meet and more. If there's one thing we've done more than ever before is communicate electronically – and I see it as a good thing.

Having said that, we are and always will be, a face to face, relationship company. I know our Account Managers can't wait to get out and visit and support our customers and discuss new opportunities with you.

On the product front, I don't think I've ever seen so many new products being trialled and tested in such a short time. There really is something for everyone, but I'd say there are more opportunities than ever to adapt, change and embrace Electronic Security. We're offering thermal camera solutions (big and small) and cameras that count customers in and out of any space. There's thermal everything on the cards coming soon. Touchless solutions involving readers, door automation, sensors and so on are changing the way everyone works. The entire reduced touch sector is an opportunity that's very relevant now, and is an exciting and an easy up-sell for you to add to your business.

The MLAA's recent membership survey showed more than half of all locksmith customers saw Covid-19 as an opportunity to diversify their businesses and learn new things - be it Electronic Security, automotive, or business related. LSC offered all kinds of training during this period, and we're planning many more in the near future.

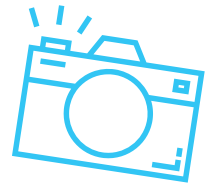
All of this makes me feel positive about our industry in the year ahead. Yes it's likely the economic damage will be fairly widespread, and some areas will suffer. Businesses that are adaptable and flexible can prosper through technology, training, new product lines and leveraging their expertise in new ways. Customers still need service, and those who invest are likely to come out stronger than ever.

I thank you for your support during this period, and look forward to us supporting you in your business like never before.

Regards,

- Mark Johnson

HAPPY CUSTOMERS



WEBSTERS MASTER LOCKSMITHS (NSW)



Oliver Wilmette & Bud Burns from Websters Master Locksmiths have added the Unocode 299 and Triax Pro to their growing Silca family.

GIPPSLAND LOCKSMITHS (VIC)



Owner Anthony Dunne on the left happily holding his Advanced Diagnostics SMART Pro with Mick next to their Silca Futura Pro.

LOCK & KEY SERVICE (NSW)



Colin Field, Rod Carter, Chris Lia and Luke Barber from Lock & Key Service with their Unocode 299!

FRANKSECURE (QLD)



Shane Ho from FrankSecure with his new Silca Futura Auto.

dormakaba
CONGRATULATIONS

AROHA FROM MACKAY
WHITSUNDAY LOCKSMITHS (QLD)



TODD FROM TOOWOOMBA
LOCKSMITHS (QLD)



SECURE6

Expand your existing Secure6 restricted key systems with the new S6M and S6B profiles.

- ✓ Designed and built in Australia with leading locksmiths
- ✓ Fully compatible with most commercial locks
- ✓ Unique profile guards against picking and other unauthorised entry
- ✓ Easy key ID with a choice of 10 different colour inserts



TERMS & CONDITIONS

Product features and pricing in this newsletter are subject to change without notice. Special promotional prices advertised here are for the month the newsletter has been published. However, some offers may commence on or extend beyond the promotional period. Most products have been photographed in-house and are identical to what you will receive. Information presented in this newsletter has been checked and is believed to be correct at the time of printing, however, errors and omissions may occur. LSC can not guarantee prices, specifications, or features of products that may change after printing.