

# EvoX

# NEWSLETTER

1926 - 2026

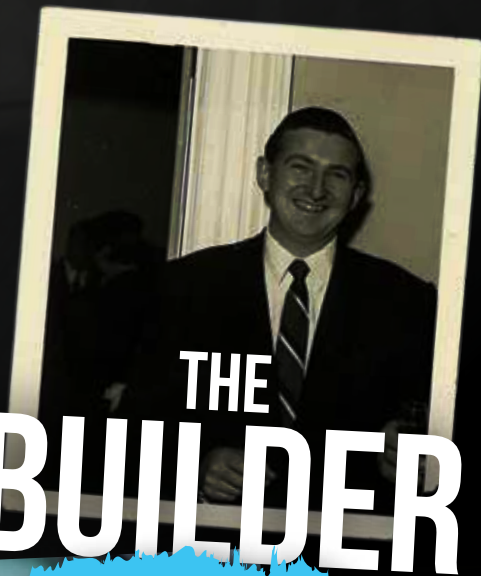
LSC<sup>100</sup> YEARS OF COMMITMENT

*This Month*

New McGrath Smart Locks: GRANGE

Precision Cutting with Silca EvoX

Help Us Improve Our Website



# THE BUILDER

Stuart's Era



*Locksmith's Supply Co*



*Stuart's values:*

- 1) Go help the customer*
- 2) Product knowledge is all-important*
- 3) Do what you said you were going to*

*J. Johnson*

*Building Momentum:*

# *The Years of Expansion*

Last month I wrote about LSC's rapid development through the 1950s and early 1960s, and how Stuart Johnson spent that decade travelling across Australia, selling EzyCut, Mancuna, RST and many other well-known locksmithing products to what was then an awakening industry.

By 1963, the jet age had transformed international travel, allowing Stuart to meet American and European suppliers in person, even if each journey still meant months overseas.

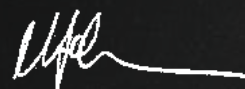
From that first overseas journey, relationships were formed with companies such as HPC (USA), RST (UK) and Berthold Neiman (Germany), partnerships that would support the business for decades. Many of the companies from that era have since disappeared through closures or acquisitions, but those early connections helped shape LSC's international outlook.

Back home, the 1960s saw strong local manufacturing growth. Australia had several key blank producers including Nelson (SA), Martin (Melbourne), Dahlson and Clavis Industries with EzyCut. At the same time, major manufacturers such as Lockwood, Lane, Astra and Efco were expanding, and LSC played an important role wholesaling these products while continuing to import specialised tools, machines and key blanks.

By the early 1970s, Stuart's regular interstate travel gave way to the demands of managing a rapidly growing company. Additional sales staff were employed, always with a strong emphasis on product knowledge, a principle that remains central to LSC today.

Competition was intensifying. Dominion Lock (DL), distributed locally by the Mills family, offered an extensive range of over 2,000 key blank profiles. While both EzyCut and the emerging Edmonds range performed strongly across the fastest-moving 200 profiles, the breadth of the Dominion range made it increasingly competitive in a market that demanded variety.

The economics of producing profile after profile for a relatively small Australian market became increasingly difficult to justify. LSC could no longer rely on EzyCut alone - we needed a global manufacturing partner to compete effectively.



Mark Johnson

*To be continued next month..*



LOVE IT?  
LOCK IT

PRECISION  
GERMAN  
ENGINEERING

View new  
ABUS Rock  
range online

### The ABUS Rock Series just got better!

The new ABUS Rock Series has had a serious upgrade.

In doing this ABUS can achieve a higher security rating to previous ABUS Rock models.

ABUS have made the new models accept various cylinders, the 570 Oval, the ABUS fig 8 core & a half Euro cylinder (10/30), making this a truly worldwide product.

Higher security & multiple cylinder options make it a class above the competition.



Scan here  
to view online

New ABUS High Security  
catalogue available!



ABUS ROCK  
83/70  
8370570NLC



ABUS ROCK  
83CS/70  
83CS70570NLC



ABUS ROCK  
83/60  
8360570NLC



locking for life



*Be compliant!*

# BRAVA METRO DDA LEVERSETS

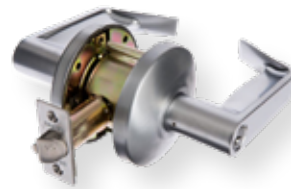


## Unlocking Accessibility with BRAVA DDA Compliant Levers

**BRAVA's range of DDA compliant levers combines accessibility, durability, and security to meet the highest industry standards.**

Designed for easy grip operation, these levers ensure effortless use for individuals with limited hand dexterity and mobility, complying with BCA AS1428.1-2009 for accessibility. Successfully tested for up to four hours on fire door assemblies in accordance with AS 1905.1-2005, our levers offer both peace of mind and long-lasting performance.

Beyond accessibility and fire safety, BRAVA levers incorporate a Silca LW5 profile 6-pin cylinder and feature the popular PD 8221 barrel, ensuring high-security functionality. Compatible with most restricted keying systems, these levers provide flexibility for commercial and residential applications requiring key control and system integration. Whether you're upgrading an existing space or securing a new project, BRAVA delivers accessibility, compliance, and security in one complete solution.



### EV Series Clutching

#### Entrance Lever EV Series

EV6000SCDDA

#### Institution Lever EV Series

EV6061SCDDA

#### Glass Door Lever EV Series

EV6011SCDDA

#### Classroom Lever EV Series

EV6012SCDDA

### Privacy Lever EV Series

EV6030SCDDA

### Storeroom Lever EV Series

EV6062SCDDA

### Passage Lever EV Series

EV6082SCDDA

### EU Series Non-Clutching

#### Entrance Lever EU Series

EU6000SCDDA

#### Institution Lever EU Series

EU6061SCDDA

#### Glass Door Lever EU Series

EU6011SCDDA

#### Classroom Lever EU Series

EU6012SCDDA

### Privacy Lever SC EU Series

EU6030SCDDA

### Storeroom Lever EU Series

EU6062SCDDA

### Comm/Set SC Keyed EU Series

EU6051SCDDA

### Comm/Set SC Plain EU Series

EU6052SCDDA

# PUTTING THE PRO IN PROTECT

Supporting the professionals who protect what matters most



At LSC, “pro” isn’t a buzzword we throw around. It refers to the hard-working security professionals that we have the privilege to support, each and every day.

As a maxim, ‘Putting the Pro in Protect’ reflects LSC’s dedication to empowering the professionalism, skill and responsibility demonstrated by these security specialists and our ongoing commitment to helping them keep our homes, businesses, and communities safe and secure.

## WHAT ‘PRO’ MEANS TO US

Being a pro isn’t just about having the right tools. It’s about experience earned on the job and going the extra mile when something doesn’t go to plan. It’s about the keeping homes, businesses and communities safe and secure with the utmost integrity and without shortcuts.

For LSC, professionalism means setting that standard, and being the example for customer support through our product selection, project advice and consistently being available to help – every single day

## SUPPORTING THE PEOPLE WHO KEEP US ALL PROTECTED

Our customers work in real-world conditions, often under pressure and against tight timelines. They rely on LSC not only for access to products, but for clarity, confidence and support – especially when the job is complex or the stakes are high. That trust is built over time and it’s reinforced every time we show up prepared, responsive and reliable.

## HOW LSC PUTS THE PRO IN PROTECT

‘Putting the Pro in Protect’ happens throughout the entire LSC business, including:

- branch teams who get to know their customers
- customer service teams who solve problems calmly
- warehouse teams who keep things moving
- BDMs who listen first and advise second
- training and Tech-Ed teams who help customers stay ahead

Many different roles. One shared purpose.

## PROUD TO PLAY OUR PART

When our customers choose to trust LSC, they’re looked after by a team of dedicated experts, many of whom have been in the LSC family for the long haul. These are people who understand the industry because they work in it every day. They answer questions, provide advice, and troubleshoot inevitable problems to make sure jobs get done.

## PRO IN ACTION

The ‘Putting the Pro in Protect’ brand mark is something you’ll often see independent from the LSC logo. This is because it isn’t just about us. Instead, it represents a shared commitment by us and the people we serve, to providing the best quality security products and service possible. By working together toward this goal, we promise we will continue to protect what truly matters.

# PRODUCT SPOTLIGHT

Explore more of the Neptune range today! [lsc.com.au](http://lsc.com.au)

NEW

## NEPTUNE CATALOGUE

Neptune offers the latest products to meet the ever changing demands for security and convenience in daily life.

Explore the updated range our industry experts have curated and sourced to answer your electronic security needs.



**Neptune**  
Security Products



## ADI 5004 HEAVY DUTY

The ADI 5004 heavy duty locking bolt is the industry standard

Suitable for securing shop fronts, warehouses, hotels, community recreation areas, storage facilities and garages.

Supplied in multiple versions to suit your needs.



**Lock Bolt 5004 SC less Cylinder**  
44142005



**Lock Bolt 5004, SC Less Barrel**  
44142009



**Lock Bolt 5004, SC**  
44142000



## ABUS FLEXIBLE SECURITY

Cobra loop cables are suitable for light to medium duty security needs. The high quality steel cable is wrapped in a vinyl cover with loops at each end. The synthetic coating prevents damage.

Available in varying lengths and diameters, great for U-shackles and padlocks.



**ABUS Cable Cobra 10/1000 Loop**  
COBRA101000



**ABUS Cable Cobra 10/200 Loop**  
COBRA10200



**ABUS Cable Cobra 10/500 Loop**  
COBRA10500



**ABUS Cable Cobra 12/180 Loop**  
COBRA12180



**ABUS Cable Cobra 8/200 Loop**  
COBRA8200



# BORG MARINE GRADE



The Borg Marine Grade Pro range includes multiple different model designs for a broad range of applications. With matt black finish and marine grade stainless steel internals the range is built tough for harsh conditions. The Marine Grade Pro range is guaranteed to resist corrosion for up to 1 year.

For the full range of Borg product please visit [www.lsc.com.au](http://www.lsc.com.au)



*Cam lock keyed alike*

**BL1706 Digital Cam Lock for Cabinet Door KD**  
KD BL1706MGPROECPKD



*Cam lock keyed to differ*

**BL1706 Digital Cam Lock for Cabinet Door KA**  
KA BL1706MGPROECPKA



*Key override*

**BL5771 Easicode Pro With Lever Back to Back**  
BL5771MGPROECP



*Single side keypad*

**BL5001 Easicode Digital Lock With Lever**  
BL5001MGPROECP



*optional holdback*

**BL2601 Easicode Pro Digital Lock**  
BL2601MGPROECP



*Rim mount deadbolt*

**BL2605 Digital Door Lock With Knob Holdback**  
BL2605MGPRO



*Sliding door hook bolt*

**BL2606 Sliding Door Hook Bolt**  
BL2606MGPROECP



*Anti climb case*

**BL3430 Easicode Pro With Anti Climb Case**  
BL3430MGPROECP



*Back to back keypads*

**BL4441 With Lever Back To Back**  
BL4441MGPROECP

# BDS BLOCKER PLATES & PACKER PLATES

Popular range of BDS blocker plates and packers available in black powder coat option. Supplied in trade packaging with fixings included.



## BLOCKER PLATES



With kink for electric strike

BP6860ELECBLK



Suit mortice locks

BP6860MBLK



Suit EV8000, EU6000 & EV6000 lever sets

BP6860E7BLK



No cutout

BP6860BBLK



Suit entrance set

BP6860EBLK

## PACKER PLATES



Suit EU and EV entrance set

BPPE700MB



Suit blank blocker plate

BPPBMB



Suit entrance set

BPPEMB



Suit mortice lock blocker plate

BPPMMB

## INVEST NOW AND SAVE! SMALL BUSINESS SUPPORT \$20,000 INSTANT ASSET WRITE-OFF

Temporary increase of the instant asset write-off limit from \$1,000 to \$20,000 for the 2025–26 income year.

On 4 April 2025, the government announced it will continue to provide support for small businesses by extending the \$20,000 instant asset write-off limit until 30 June 2026.

Under the measure small businesses with an aggregated turnover of less than \$10 million, can deduct the full cost of eligible depreciating assets costing less than \$20,000 that are first used or installed ready for use between 1 July 2025 and 30 June 2026.



The \$20,000 limit under the measures applies on a per asset basis, so small businesses can instantly write off multiple assets. Investing in a new key machine such as the Silca EvoX, Bravo Professional, Marker2000, Futura Edge or others could give you an instant write off.

This information is a general summary and not advice. Speak to your Accountant or Tax Professional before making a purchasing decision to ensure these rules apply to you and are suitable for your business and financial situation.

# EVOX

**Precision Key Cutting** for Every Security Need





## EXPERIENCE THE **NEXT GENERATION** OF PRECISION

### **New from Silca: EvoX - The compact electronic machine for automotive key cutting professionals**

The latest innovation from Silca, smaller than previous solutions and more portable. Designed to cut virtually any automotive key, including internal or external two and four track high security keys, as well as traditional double sided car keys, with a single 4-way universal clamp.

The machine comes with a built in, hard-wired, 7-inch industrial quality touch screen featuring Silca's unrivalled database of cards and codes.

Made in Italy for engineering quality and precision, the machine has a special 4-way rotating clamp, designed to hold all kinds of car keys either on their side or on their back – and a new key alignment system ensures perfect positioning to the shoulder or tip as required.

There is now a single, universal cutter compatible with the main key types. The tracer is fixed, no need to insert it or move it out of the way.

New software allows 'copy by original', designed for keys where a card hasn't been developed, or exotic keys not yet widely available – this feature turns the machine into a duplicator, saving space and optimising usage.

- Movements on 3 axis with special bushes
- 12100rpm main motor
- 281mm wide, 421mm deep, and 308mm high
- 13kg
- Updating by network connection (Wifi or Ethernet)
- 36v DC 5.5A 130W power supply included

**Compact, powerful, functional, innovative, portable.**

EvoX – it's the machine everyone will be using, have you got yours?



# HELP US IMPROVE OUR WEBSITE

## TELL US WHAT YOU THINK

Last month we shared some tips on making sure your website is doing its job for your business. Now we'd love to hear from you about our website.

We're currently working on some major improvements, and your feedback will help us make sure the changes focus on what matters most to our customers.

We've created a short survey to better understand how you use our website.

## YOUR FEEDBACK MATTERS

Your feedback is invaluable. It helps us understand how you use our website — from finding products and checking specifications to placing orders online — and guides us in creating a smoother, more useful experience for everyone.



## COMPLETE THE SURVEY

The survey takes **less than two minutes**, and every completed survey goes into the draw to **win one of 10 \$200 Visa Gift Cards!**

Complete the survey by either scanning the **QR code** below or by visiting [www.lsc.com.au/web-survey](http://www.lsc.com.au/web-survey) and answering all the questions.

# WIN 1 OF 10 \$200 VISA GIFT CARDS

Scan here to go to the survey



# CREDENTIAL PRODUCTION & PERSONALISATION

View the full range at [lsc.com.au](http://lsc.com.au)



## COMPLETE CREDENTIAL PRODUCTION, ALL IN-HOUSE

At LSC, we go beyond distribution — we deliver complete credential production in-house. Our state-of-the-art production facility is equipped for card printing, programming and laser engraving, allowing us to locally customise high volumes of credentials securely and quickly.

With an industry-leading turnaround time, we help installers and integrators keep projects on schedule without compromising on quality or security. From secure encoding and key management to corporate branding and design, our team ensures every credential meets the highest standards of precision and reliability. Whether you need small batches or large-scale deployments, LSC provides fast, consistent, and professional results — making us your most trusted credential production partner.



**Neptune ISO Card MIFARE Classic 1K S50 Colour 1 Side**  
NEMFISOC1



**HID Seos ISO Smart Card with 8k Memory**  
5006VGGNN



**HID Seos 8k Keyfob with Grey Insert**  
5266VNNN



**Neptune Overmoulded Pear Fob MIFARE Classic 1k S50**  
NEMFOPFY



**Neptune Aqua Keyfob MIFARE Classic 1K S50**  
ACAKS50G



**Neptune Urban Keyfob with Keychain**  
NEURBEMDBL



**Neptune Silicone Wristband iCLASS Large**  
NEICSWDBL



**Neptune Silicone Wristband iCLASS Xtra Large**  
NEICSWBLKXL

# GRANGE



## Elegant Pull-Handle Smart Lock

A unique fingerprint smart lock for contemporary homes.



MLGRANGESS  
MLGRANGEBK



### Accompanying parts also available

PART	DESCRIPTION
MLSPEXTPGRA100	Extended Tail Piece And Connector Bar For Grange Models, Suits Door Thickness 75mm - 100mm
MLSPEXTPGRA75	Extended Tail Piece For Grange Models, Suits Door Thickness 52mm - 75mm
MLGRANGEDUMMYSS	Grange Dummy Entrance Pull Handle in Satin Stainless Steel Finish
MLGRANGEDUMMYBK	Grange Dummy Entrance Pull Handle in Black Finish

Matt Black or Satin Stainless Steel  
**FINISH**

35mm - 55mm (can extend up to 100mm with additional tailbar)

**DOOR THICKNESS**

900mm (H) x 60mm (W) x 30mm (D)

**LOCK CASE DIMENSIONS**

SS304 adjustable 60-70mm anti-saw bolt, plus additional roller bolt

**LOCK TYPE**

IP65 on external lock housing  
Resists heavy rain

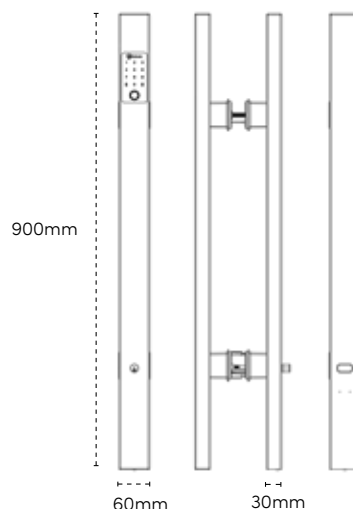
**WATER RESISTANCE RATING (IP CLASS)**

200,000

**CYCLE TESTED**

Patent No. 2021101919

**AUSTRALIAN DESIGNED**



**FINISH**

**BACKSET**

Matt black	60/70mm Adjustable anti-saw bolt, plus additional roller bolt
Satin Stainless Steel	60/70mm Adjustable anti-saw bolt, plus additional roller bolt



Fingerprint



Phone Access  
(Bluetooth)



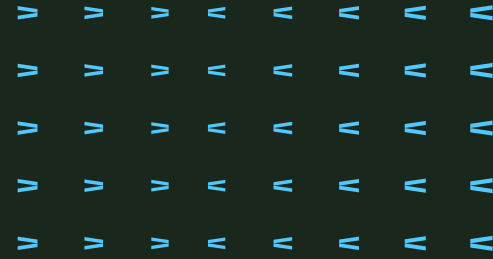
PIN Code



Fobs & Cards



Mechanical Key



# GO DARK. GO WIRELESS. GO SALTO.



Make a bold statement on your next project. SALTO wireless peripherals in striking black finish don't just perform — they stand out. Designed for modern environments where aesthetics matter just as much as security, this is access control with attitude.

Powered by SALTO's industry-leading BLUEnet wireless technology, you get secure, real-time control without the hassle of extensive wiring. Remote management, live monitoring,

seamless scalability — all delivered in a sleek black finish that elevates any installation.

Whether it's a corporate office, premium residential, education or commercial fit-out, these peripherals bring together performance, flexibility and design impact in one powerful solution.



## Gateway

The backbone of your wireless network. The SALTO Gateway links your PC to the system and is fully managed through ProAccess SPACE software, collecting and transmitting data from escutcheons via nodes for smooth, reliable communication.

GATEWAYB3CAUS

## BLUEnet Node

Extend your reach. The BLUEnet Node bridges gateways and escutcheons, expanding coverage across larger sites or higher door counts — ensuring strong, stable wireless performance throughout.

RFNODE3B

## IQ

Smart, flexible and cloud-ready. The IQ 2.0 connects via 2G, 3G, 4G, WiFi, PoE or Ethernet and communicates effortlessly with SALTO KS access points via ZigBee/Bluetooth — giving you total deployment flexibility.

IQ21B300KS | IQ21B7AUKS | IQ21B4AUKS | IQ21B8AUKS



# MELBOURNE TEAMS CORPORATE TRIATHLON

## LSC Joins Team Salto at the Melbourne Corporate Triathlon

On Sunday 15 March, LSC staff joined Team Salto to take part in the Melbourne Corporate Teams Triathlon held at Catani Gardens, St Kilda. The team-based event featured a 300m swim, a 10km ride and a 4km run along the beach path. This year also introduced a run relay option, giving more participants the chance to get involved in the day's activities.

With warm weather and great energy throughout the day, it was a fantastic event for everyone involved. Team Salto once again made the occasion memorable with a post-race BBQ and refreshments, giving participants a chance to relax and celebrate after crossing the finish line.

As proud Platinum Sponsors of Team Salto, we were delighted to compete alongside them and support a meaningful cause. The event helped raise funds for the Victorian men's and women's wheelchair basketball teams, the Victoria Wonders and Victoria Marvels, who compete in the National Wheelchair Basketball League.

Through the Salto Foundation, Salto continues to support initiatives that promote inclusion and empower athletes with disability through sport and community programs.

Well done to everyone who participated and supported the event, we were proud to take part for the second year running with Team Salto, contributing to such a fantastic cause.



# GOLDEN TICKET PROMOTION

Play the game with FSH to win **1 out of 5 Breville Barista Pro Coffee Machine with a set of glass coffee cups.**  
4x Golden and 100x Silver tickets are hiding in FSH product packaging in LSC branches across the country.

**Each golden ticket guarantees a win!**

Found a silver ticket? You are in the draw to get the 5th prize!  
The more FSH you purchase, the higher the chances of winning.  
Promotion valid until 17 April 2026.

**4x** Instant win Golden Tickets  
**100x** Lucky draw Silver Tickets



\*Terms and conditions apply.

# UPCOMING TRAINING

*Upskill yourself and your team to grow your businesses capabilities*

Looking to build your CCTV installation skills? Our popular Dahua IP Video Surveillance and Video Intercom training courses are returning this month, with sessions scheduled in QLD, VIC and NSW. These hands-on, face-to-face courses are designed to give installers practical experience with Dahua's latest cameras, recorders and intercom solutions, helping you confidently specify, connect and configure systems for your next project.

Places are **limited**, so keep an eye on our TechEd training page and secure your spot early.



**DAHUA CCTV CERTIFICATION**  
ESC801 | LVL 1 | (5hrs) lunch inc.

**QLD** Thursday, 9 April  
**VIC** Tuesday, 21 April  
**NSW** Wednesday, 22 April



## HAVE YOU SEEN THE NEW TECHED ONLINE PORTAL?

Explore a sleek, user-friendly design with a vast video library, updated FAQs, enhanced support, and redesigned course pages for seamless learning and access.

*Scan here to find out more*



visit [www.lsc.com.au/teched-training](http://www.lsc.com.au/teched-training)

# TRADING HOURS



## APRIL TRADING HOURS

MON	30 MAR	<b>OPEN</b>	THU	2 APR	<b>OPEN</b>	TUE	7 APR	<b>OPEN</b>
TUE	31 MAR	<b>OPEN</b>	FRI	3 APR	<b>CLOSED</b>	WED	8 APR	<b>OPEN</b>
WED	1 APR	<b>OPEN</b>	MON	6 APR	<b>CLOSED</b>	THU	9 APR	<b>OPEN</b>



*Thank you Allegion for the birthday wishes!*

FROM **ALLEGION**   
PIONEERING SAFETY™

The Allegion team treated our staff to a wonderful afternoon tea to celebrate LSC's 100-year anniversary, arriving with a specially prepared cake to mark the occasion. After a round of Happy Birthday and some heartfelt congratulatory speeches, it was a memorable moment for everyone. Thanks Allegion!



It has been a fantastic start to the year with the annual Master Locksmiths Association of Australia (MLAA) summer roadshow travelling across Australia and New Zealand. The warm weather set the perfect backdrop to catch up with members of the locksmithing industry, share insights, and enjoy a beverage or two.

The roadshow continues to be a valuable opportunity for us to connect with the community, hear what matters most to locksmiths, and see the latest in security solutions.

We look forward to seeing everyone again at the winter MLAA roadshows and continuing the momentum throughout 2026.



**ADVANCED  
DIAGNOSTICS**

**AD**  
SMART Pro  
TOKEN  
SPECIAL



**LSC 100 YEAR SMART PRO  
TOKEN SPECIAL  
12 MONTH SUBSCRIPTION**

**30% OFF**

SD755115AD\*

**/// END OF FINANCIAL YEAR DEALS ///**

**Why Annual UTP**

- ✓ Set and forget for a longer term.
- ✓ Maintain continuity of service without disruption.
- ✓ Maximise revenue generating capabilities.
- ✓ Facilitates new start and refresher training without penalty.
- ✓ Alleviate concerns about token wastage.

**Why SMART Pro**

- ✓ Safe and reliable tool.
- ✓ The most comprehensive coverage in the market.
- ✓ Convenient on board information resource.
- ✓ Locally designed super easy to follow menus.
- ✓ Unrivalled after sales service and support.

\*Terms and conditions: Strictly valid from 1st April to 30th June 2026.

**TERMS & CONDITIONS**

Product features and pricing in this newsletter are subject to change without notice. Special promotional prices advertised here are for the month the newsletter has been published. However, some offers may commence on or extend beyond the promotional period. Most products have been photographed in-house and are identical to what you will receive. Information presented in this newsletter has been checked and is believed to be correct at the time of printing, however, errors and omissions may occur. LSC can not guarantee prices, specifications, or features of products that may change after printing.