

ASSA ABLOY

Unlock the

ULTIMATE SPORTING EXPERIENCE

NEWSLETTER

1926 - 2026

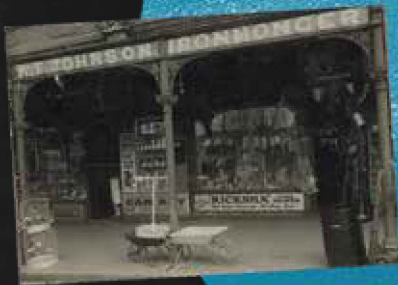
LSC ¹⁰⁰ YEARS OF
COMMITMENT

This Month

Celebrating 100 years of LSC

Unlock the Ultimate Sporting Experience

Leading Australian brands



THE PIONEER

Aubrey's Era



Aubrey's values:

1) Pack with pride, send with speed

2) Strive to be of service

3) Always promote your wares

Aubrey J. Johnson

2026 IS A SIGNIFICANT MILESTONE YEAR FOR LSC

When my grandfather opened his ironmongery business in Victoria Street Melbourne one hundred years ago, I'm sure he would have had no idea about the shape of the world all these years later. While so much has changed, what's remained is commitment.

Commitment to serve those who protect what matters to people all around Australia (and now New Zealand as well). Commitment to go the extra mile, to respond and engage with our industry to shape and support a secure future.

Those 100 years of trust, relationships and knowledge didn't come automatically – they came from the hard work and innovations of those who came before us, and who are there to support you, our customers today.

I'm incredibly proud of the achievement, and our entire team are excited about the year ahead. We've been talking about it for a while - now it's here.

The calendar is looking full already, we're launching a new and unique historical nod to our industry in North Melbourne soon; we've got customer and industry events around the country, and there will be special LSC 100 year events throughout the year.

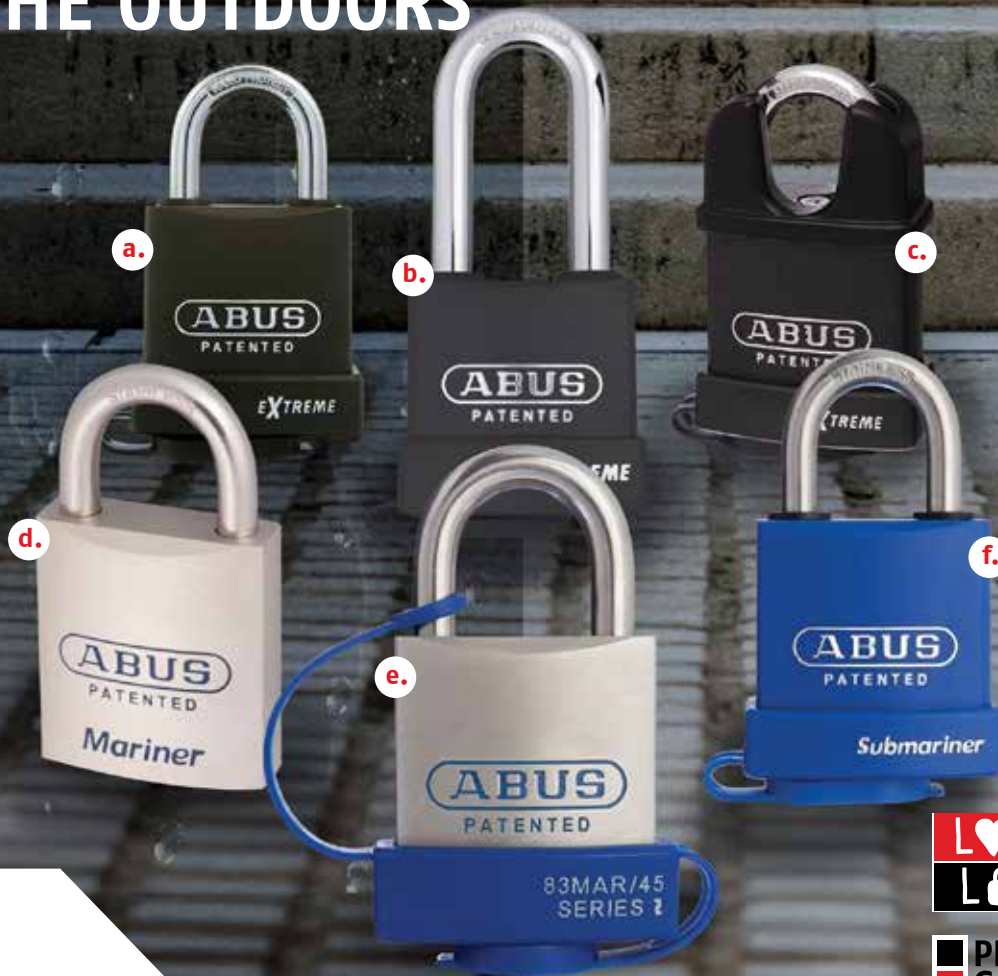
Of course celebrating is one thing, but what won't change is our family-led and customer-focused ethos that our partners and team embrace to bring you trusted, reliable, innovative and quality products to let your business do what's important for your customers.

I look forward to seeing you throughout the year, and I wish you all the best for the year ahead.



Mark Johnson

ABUS SECURITY FOR THE OUTDOORS



LOVE IT?
LOCK IT

PRECISION
GERMAN
ENGINEERING

OUTDOOR PROTECTION

Warmer months mean more people are enjoying time outdoors, remember security doesn't stop at the front door. Choose ABUS's extensive range of outdoor weather resistant padlocks. Ideal for locking boats, bikes, trailers, gates & more.

With highly corrosive resistant internal components and state of the art plating, makes these padlocks ideal for securing items exposed to the weather.

ABUS is your answer for outdoor locking applications.

PARTCODES

- | | |
|------------------------|-----------------------|
| A. 83WP53NKD | D. 83MAR45NKD |
| B. 83WP63HB63NC | E. 83MAR45NWCC |
| C. 83WPCS53NKD | F. 83WPIB53NKD |

*visit lsc.com.au to see ABUS
outdoor padlocks complete range!*

BRAVA OL SERIES LOCKS

The most comprehensive cabinet and joinery locking solutions for the Locksmith Professional. Locking cupboards, cabinets, drawers, hatches and showcases. The easiest to rekey cupboard lock on the market.



locking for life



- Easily rekeyable via set screw cylinder release mechanism
- Easily convertible to key retain (using BR10361KR)
- 25mm bolt throw
- Also Available: Polished Brass BR700LCAPB

Cupboard Lock

Satin Chrome BR700LCASC



- Easily rehandable to locking up (standard), down, left or right
- Easily rekeyable via set screw cylinder release mechanism
- 9.5mm brass latching bolt
- Also Available: Polished Brass BRL78VLCAPB

Latching Cupboard Lock

BRL78VLCASC



Showcase Lock

BR829LCSC



Cam Lock

BR820LCSC

Polished Brass: BR820LCPB



Dead-latching Cupboard Lock

BR850LCASC

Polished Brass: BR850LCAPB



Cupboard Lock (Locking Up or Down)

BR800LCASC

Polished Brass: BR800LCAPB

BRAVA OVAL CYLINDERS WITH DRILLED M4 THREADED HOLES FOR EXTENSIONS

New BRAVA Metro 5070 oval cylinders with rear drilled M4 threaded holes extensions. Available in Satin Chrome KD, LP & Matt Black KD.



locking for life



BRAVA oval cylinder KD with drilled M4 threaded holes for extensions.

Satin Chrome

5070M4USCKD



BRAVA oval cylinder less plug with drilled M4 threaded holes for extensions.

Satin Chrome

5070M4USCLP



BRAVA oval cylinder KD with drilled M4 threaded holes for extensions.

Matt Black

5070M4UBLKCD



2025 Winner

Christopher Savtchenko | ASM Locksmiths, NSW

Congratulations to our 2025 Australia's best young locksmith winner - Christopher Savtchenko! Chris has proved himself to be a talented young locksmith with a great future ahead of him.

LSC will host Chris in Melbourne in late February where he will receive his prize pack, visit the SALTO Xperience Centre, KJ Ross, Lockwood manufacturing facilities and network with industry peers.

We congratulate and thank our other three finalists, Anthony Atkinson, Kyle Davey and Jack Jones for their time and effort during the judging rounds.

Sponsored by:



Prizes



ABYL trophy



\$2,500 worth of tools & products



\$2,000 TechED voucher



\$1,000 travel & accommodation



Apple iPad Pro



Pair of Steel Blue work boots



The judging panel - Mark Johnson, Geoff Ross, Scott McLean & David Weinle

PRODUCT SPOTLIGHT

visit lsc.com.au to see extensive range of ABUS chain lengths and sizes

DON'T LET CHAIN BE A WEAK LINK IN YOUR SECURITY

ABUS High Security Chains, made of special hardened steel, are corrosion resistant. Available in convenient set lengths with a protective fabric sleeve to prevent damage. Excellent security for a wide range of applications.

Available in a wide range of lengths & diameters, also in bulk drums for customised lengths.



ABUS Chain Square
6mm x 110cm

6KS110BLK



ABUS Chain Loop
12mm x 120cm

12KS120BLK



ABUS CONTAINER LOCK

The ABUS 215 series Conhasp Granit™ is the ultimate heavy duty made in Germany hasp, designed specifically to lock up containers in high-risk situations.

- Fits the most common transport and storage containers
- Also suitable for sliding doors, gates, truck wing doors etc
- Supplied with rekeyable Class 10 Granit™ 37RK/70HB100 padlock
- Extremely resistant steel construction and special welding technology for enhanced security
- Corrosion protected
- Supplied with two keys
- Code card for ordering additional key
- Supplied boxed



21510037RK70HB100

MORE GREAT NEW TOOLS FROM GTT

Make your job run easier, save time and move onto the next job quicker with these popular tools from GTT.



A small, spring loaded crimping plier. Once used for face caps (you can still use it for that of course), it's ideal for making small and delicate repairs where a 'crimp' action is required

GTT455



An easy to use barrel spinner for 'flipping' barrels picked the wrong way, with a powerful spring it's sure to get you out of that "oops" moment in no time

GTT201



A multi-use set of circlip pliers with needles for straight, 90 degree and 45 degree use. A toolbox essential.

GTT454



A pack of thin mica sheets, which are ideal for slipping latches, or manoeuvring past small gaps to unlock window latches or similar. Thin enough to fit, strong enough to do the job

GTT502

GREATER THAN  TOOLS

CELEBRATING AUSSIE SECURITY BRANDS



From locksmithing heritage to future-focused smart solutions, Australia has played a huge role in shaping global security standards, driven by brands who design, test, and manufacture with our unique climate, regulations and customer needs in mind. In this feature we highlight the companies who keep our industry moving forward. Whether they've been around for decades or are

emerging leaders to watch, these brands share one thing: a commitment to quality, reliability and supporting local trade.

Here's to championing Australian-made, supporting our security manufacturing landscape, and acknowledging the products that safeguard homes and businesses across the nation.



Lockwood is the leading brand in the Australian locking industry. With a well-established reputation for high quality products, this iconic brand provides a wide range of locking solutions to residential housing, commercial building and industrial application markets.

ADI was founded in the mid 1970s by Locksmiths to meet the needs of Locksmiths. The inventors found that specialised locking products didn't exist, so they went about creating them.



Established in 1951, **K.J.Ross Security Locks** started out from humble beginnings to quickly grow to become Australia's most respected name in security products.



Established in 1987 **CS Technologies** is an Australian owned, leader in designing and manufacturing solutions for the building access control and security market.



Kevron is an Australian company specialising in the manufacture and supply of identification products for keys, fobs, credentials and even your pet or your wine!



Established in the late 1980s, **D&D Technologies** is a company dedicated to the design and manufacture of top-quality, state-of-the-art gate hardware products.



Austral Lock is the Australian market leader of premium door and window hardware, providing locking solutions for windows, security screen doors (hinged or sliding) and sliding patio doors (aluminium or timber).



Lock Focus has been at the forefront of lock mechanism innovation in Australia since 1972. They continue to manufacture the majority of their products in Australia, making Lock Focus one of the last lock manufacturers in the country.



Founded in 1917, **Sutton Tools** remains an Australian family business that is renowned for its high-quality power tool accessories and cutting tools for the hardware market and a wide range of specialised industrial applications.



Telkee Key Cabinets is Australia's #1 Key Management Solution. For over 70 years they have manufactured commercial quality lockable key management systems in Sydney, Australia.

ASSA ABLOY

Unlock the

ULTIMATE SPORTING EXPERIENCE

Unlock the ULTIMATE SPORTING EXPERIENCE



**DON'T MISS OUT
PURCHASE BETWEEN
01/01/26 - 31/03/26**

HOW TO ENTER:

Receive 1 x Entry into the draw for every \$1,000 you spend on ASSA ABLOY products during the months of January to March, 2026



Choose 1 of 3 experiences for you and a friend!

1. 2026 Monaco F1 Grand Prix:

- 7 nights' accommodation in the renowned French Riviera – Nice
- Return economy airfares
- Return airport transfers
- 3 Day Yacht Viewing Experience for the 2026 Formula 1 Monaco Grand Prix
- Daily Luxury Tender Services to and from the Yacht
- Daily breakfast, Gourmet buffet luncheon, Afternoon tea and deserts
- All day open bar
- Live DJ and entertainment

Trip must be taken in June 2026

2. 2026 Indy 500:

- 7 nights' 5 star accommodation (3 x Magnificent Mile district Chicago & 4 x Downtown Indianapolis)
- Return economy airfares
- Return airport/race day transfers
- Indianapolis 500 Hospitality at the exclusive Holman Club for Carb Day and Indy 500
- Premium hospitality suite experience located on the outside of the front straightaway, just past the exit of Turn 4
- Access to Hulman Terrace Club reserved seating and Hulman Terrace Club Suite for days listed above
- All-inclusive food and beverage on Carb Day (Friday May 22) and Indy 500 Race Day (Sunday May 24)
- Pit and/or Garage credentials every day except Indy 500 Race Day
- Reserved seating to the iconic Indy 500 Festival Parade on Saturday 23rd May
- Indianapolis Motor Speedway Museum Access

Trip must be taken May 2026

3. 2026 Wimbledon Championship:

- 7 nights' accommodation at the Marriott in London's Kensington
- Return economy airfares
- Return airport transfers
- 2 x tickets to the Ladies and Men's Quarter Finals
- Premium Centre Court Access to the iconic lawn courts of Wimbledon
- High Tea experience at Kensington Palace

Trip must be taken in June 2026

D&D SLIMLINE HYDRAULIC GATE CLOSER



By ASSA ABLOY

- Suit gates up to 150KG / 1300mm wide
- Multiple mounting position options for gate, post, wall, or rail
- Built for tough jobs
- Withstands harsh weather conditions -30°C to +50°C
- Fast, no-weld Installation
- Complete kit includes fasteners, guide rail, hold-open, and damper for quick, hassle-free setup.



SLIMLine Vertical Hydraulic Gate Closer Left Hand with Damper and Hold Open up to 150KG Black

DC622GL19004



SLIMLine Vertical Hydraulic Gate Closer Right Hand with Damper and Hold Open up to 150KG Black

DC622GR19004



Guide Rail Mounting Plate for Slimline Vertical Hydraulic Gate Closer For Mounting to Fence Pickets Black

DCAC6329004



Body Mounting Bracket Kit For Slimline Vertical Gate Closer installation Push Side Posts Pull Side Walls Black

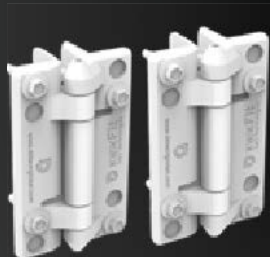
DCAC6339004



World's most trusted gate hardware www.ddtech.com

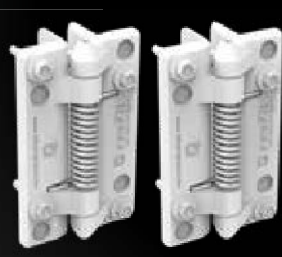
Australian Made, KwikFit™ Self-Closing and Plain Pivot hinges just got a fresh new look. Perfect for modern gates and coastal style.

- KwikFit Polymer gate hinges in white
- Available in plain pivot (no spring) and self-closing
- Self-closing weight up to 20KG max
- Integrated hinge safety cap prevents foothold
- Light and strong



D&D KwikFit Polymer S3 Plain Pivot Gate Hinge White (Pair)

KF3PWT



D&D KwikFit Polymer S3 Self Closing Gate Hinge Up To 20KG White (Pair)

KF3SWT

NEW

Self-Closing Weight
For gates up to 20kg

Strong & Light
Won't rust, bind, sag or stain with stainless steel components.

KF3SWT



KF3PWT

D&D Branding
Means authentic quality

Inbuilt Safety
Integrated hinge safety cap prevents foothold.

 **igloohome**

NEW Igloohome Padlock 2E

Available at all LSC branches

IGSP2E



Reliable, Robust, Access.

Introducing the Igloohome / Iglooworks Smart Commercial Padlock 2E.

A commercial-oriented padlock that features boron steel casing, boasts an IP rating of IP68 to withstand the harshest of Australian conditions and a lithium battery capable of lasting up to a year on a single charge (its battery can also be replaced). It features a numeric keypad and can be unlocked with either a PIN or via Bluetooth and its shackle can withstand up to 30kN of cutting force, 20kN of pulling force, and 200Nm of twisting force. Built for a variety of commercial applications and particularly excels where multi access is required in remote areas.

No WIFI no problem thanks to its own unique AlgoPIN™ technology. All the Igloohome locks operate without an internet connection.

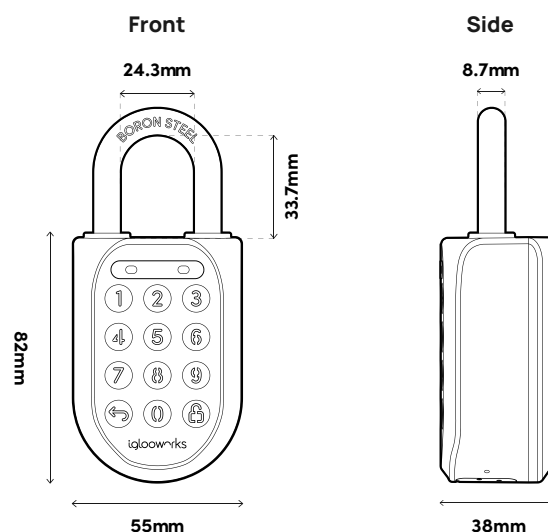
This means no more worrying about your wifi dropping out or the potential wifi hack. How, you may ask? It's all thanks to Igloohome's AlgoPIN™ technology. This technology is similar to that of a banking token's One Time Password.

Need to know who and when the lock has been accessed? Activities will be updated in real-time when users unlock via a shared Bluetooth key. Admins and owners receive notifications immediately whenever a Bluetooth Key is used. Pin-code entries, however, will only be updated when the master Bluetooth Key is used on the lock.

Locks can be operated either via the Igloohome app, Iglooworks dashboard (both app and desktop) and an API is available for integration with a customer's software system.

Specifications

Body	Zinc Alloy, Stainless Steel, Rubber
Shackle	Boron Steel
Modes of access	Pin Code, Bluetooth
Power type	Rechargeable Lithium battery
Battery life	Up to 12 months*
Emergency power type	USB-C jumpstart
Battery operating temperature	-20°C to 50°C
Operation temperature	-30°C to 55°C
Certifications	IP68, CE, RoHS2, FCC, CEN-3, IK-09, ISED, GITEKI, UKCA
Protocols	Bluetooth 5.0, algoPIN™ Technology
Usage	Suitable for both indoor and outdoor usage



WIZCOLOR

AS BRIGHT AS DAYLIGHT



WHAT IS WIZCOLOR?

The Dahua WizColor Technology seamlessly integrates powerful AI-ISP, large pixel size sensor, and large aperture in cameras, enabling vibrant, high-quality nighttime images while preserving details and minimizing image blur. On this foundation, this technology expands its capabilities with five innovative themes: WizColor + 4K, WizColor + PT, WizColor + Vari-focal, WizColor + HDCVI, and WizColor + 4G. These advancements cater to a wider range of scenarios, delivering enhanced performance and an elevated user experience.



4K Brilliant Nights, Clear Details

Combined with high resolution, WizColor ensures that all elements remain sharp and well-defined when enlarged, preserving fine details while enhancing both visual quality and viewer engagement



Ultra image reproduction with enhanced detail preservation.



Superior nighttime clarity with minimized noise and blur.



AI-ISP powered optimization for vibrant, natural colours.



WizSense Series 6MP TiOC Pro 3.0 Active Deterrence Eyeball Network Camera with 2.8mm Fixed Lens, WizColor Technology, IP67
HDW3649HASPVPROANZ



WizSense Series 8MP TiOC Pro 3.0 Active Deterrence Eyeball Network Camera with 2.8mm Fixed Lens, WizColor Technology, IP67
HDW3849HASPVPROANZ



WizSense Series 6MP TiOC Pro 3.0 Active Deterrence Bullet Network Camera with 2.8mm Fixed Lens, WizColor Technology, IP67
HFW3649T1ASPVPROANZ



HID MOBILE ACCESS

HID Mobile Access is a modern, secure way to open doors, gates, and other access points using a smartphone, smartwatch, or other mobile device — instead of a traditional access card or key fob.

HID Mobile Access is part of HID's Physical Access Control System (PACS) ecosystem. It allows users to store their access credentials digitally in the HID Mobile Access App (or Apple/Google Wallet integration, depending on the setup). When approaching a door or reader, users can unlock it by:

- Tapping their phone or watch to the HID reader (NFC), or
- Using Bluetooth (BLE) to unlock from a short distance with a simple gesture or tap in the app



More Convenience

Replace multiple cards with the user's mobile device, provisioned over the air, for access with a simple tap.



More Choice

Choose the devices, platforms and subscription that fit your needs, with easy integration and global partner support.

Licence / Subscription Models & Types

HID offers a few different subscription/licence models for Mobile Access.

Licence/Subscription Option	Description / When Used
"Essentials" subscription	A basic licence tier — lower cost, basic features, suited to simpler access-credential needs.
"Enterprise" subscription	A more full-featured licence tier — supports larger organisations, more flexible management, integrations, extra functionality.
Term length variations (1-year, 3-year)	Licences can be purchased for different durations (1 year, or 3 years), depending on your needs.

Note: Licence packages have a minimum order quantity (MOQ) of 20 licences.

Contact your LSC Representative or local branch to find out more about Mobile Access



How it Works

Credential Issuance: Access credentials are securely issued and managed through HID's cloud platform (HID Origo™).

Storage: The credential is stored on the user's mobile device — encrypted and tied to that specific device.

Access: The device communicates with HID Signo readers using NFC or Bluetooth.

Authentication: The reader verifies the credential and grants access — all within milliseconds.



9 Brennan Way, Belmont,
Western Australia 6104

WHO ARE WE?

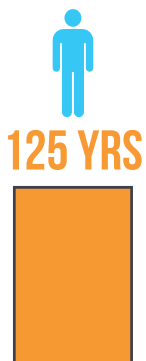
- STATE MANAGER ●
- BUSINESS DEVELOPMENT MANAGERS ●
- ACCOUNT MANAGERS ●
- CUSTOMER SERVICE ●
- WAREHOUSE ●
- LOCKSMITHS ●
- ES SPECIALISTS ●
- TECHNICAL SUPPORT ●
- MARKETING ●
- PRODUCT INFORMATION MANAGEMENT ●



AREA SERVICED

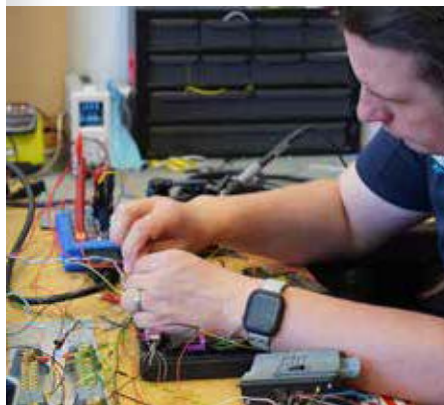


TOTAL INDUSTRY EXPERIENCE



Branch Features:

- Large carpark
- Click & collect
- Showroom displays
- Large warehouse
- Fully serviced trade desk
- Training facilities
- Customer coffee station
- In-house auto & machinery technical support



BARDON High Traffic Digital Smart Lock

Versatile 4-in-1 digital smart lock designed for both residential and commercial use.



Matt Black MLBARBKNL
Satin Nickel MLBARSNNL
 Australian Registered
 Design No. 202513268



The Bardon by McGrath Locks is a sleek and stylish lock, designed and manufactured with an emphasis on quality materials and durability. Featuring raised buttons with Braille to improve usability in all environments, this 4 in 1 digital door lock provides a versatile and convenient method of entry. The Bardon is supplied with a door sensor for optional door position monitoring and can be connected to a gateway giving you the ability to unlock your door from anywhere in the world using the McGrath Locks app.

The Bardon is equipped to suit the most demanding of applications, designed to complement the McGrath Locks F54 and F05 ANSI mortice lock. It has been constructed using fire resistant materials, a tempered glass screen and carries an IP66 rating on the outside handle.

- Lock functions and access easily managed via McGrath Locks App
- Supplied with door sensor for optional door monitoring
- Tempered Glass Screen for extra durability
- DDA compliant lever design to satisfy BCA AS1428.1 -2009
- 2-hour fire rating for E-Core and Firecore doors when fitted with McGrath Locks F54 and F05 ANSI mortice lock
- Mechanical key override when installed with McGrath ANSI mortice lock. Kawneer cylinder (extended thread) required, BRM80466EXTSCKD

*With WiFi gateway sold separately

Matt Black or Satin Nickel
FINISH

35mm – 55mm
DOOR THICKNESS

270mm (H) x 65mm (W)
LOCK CASE DIMENSIONS

Mortice lock
LOCK TYPE

IP66 on external lock housing
WATER RESISTANCE RATING (IP CLASS)

300,000
CYCLE TESTED

24 months
WARRANTY

Accessories

The McGrath Locks ANSI mortice lock is a Grade 1, heavy duty lock to suit the Bardon.

- Stainless steel construction SS304
- 70mm backset
- 92mm pitch
- 19mm projection anti-friction latch
- 1" throw deadbolt (F54)
- Field changeable handing
- Accepts threaded Kawneer cylinder (not Included)
- Cycle tested to 1,000,000 cycles



MLF54ANSIMLSSS



MLF05ANSIMLSSS

2025 ROADSHOW

Xmas

MASTER LOCKSMITHS
PROFESSIONAL GUARANTEES

As we wrapped up the year in December, it was great to come together with the locksmith community at the MLAA Summer Roadshows and reflect on what has been a big year for the industry. These moments from TAFE QLD and OuttaBounds in Perth capture some of the highlights.

From industry conversations to hands-on experiences and plenty of laughs along the way, the MLAA Summer Roadshows were a fantastic way to connect, learn, and celebrate before heading into the new year.

Thank you to everyone who joined us and helped make these events so memorable, we're looking forward to reconnecting again in the year ahead.



dormakaba

WINNERS of the Leitner Santorini 700c Step-Over Ebike

STATE	WINNER
NSW	Windsor Lock & Key
QLD	RUSWIN Locksmiths
SA	ELITE Locksmiths SA
VIC	Lock, Smith & Barrel
WA	PRESTIGE Lock Service

Congratulations!





NOMINATIONS ARE NOW OPEN FOR THE JOHN ANDREW APPRENTICE OF THE YEAR AWARD!



John Andrew
**APPRENTICE
OF THE YEAR
2026**

SUPPORTED BY



Do you know an exceptional apprentice ready to take the next step in their career?

Nominations are now open!

This award recognises emerging talent in the locksmithing industry, offering a once-in-a-lifetime opportunity to test your skills and gain national recognition.

Know Someone who should enter?

Key Details:

- Open to those who completed (or will complete) their apprenticeship between 1 July 2025 and 30 June 2026
- Finalists will receive return flights to Melbourne, 6 nights' accommodation, full registration to the 45th Annual Trade Expo & Conference and a free Gala Dinner & Awards Night ticket
- Finalists will take part in two days of hands-on testing in Melbourne on 29-30 September 2026
- The winner will receive a trip to Europe

NOMINATE NOW



Entries close 30 June 2026 - don't miss out!

Help shape the future of the industry by encouraging your rising stars to apply!



salto



dormakaba



ADVANCED
DIAGNOSTICS





ASSA ABLOY



AUSTRALIAN DESIGNED. *Purpose* BUILT

Lockwood Selector® 3700 Series Mortice Locks

The Australian designed and built Lockwood Selector® 3770 Series Cylinder Mortice Locks are made from quality materials to meet high durability and strength requirements.

This comprehensive range of cylinder mortice locks are suitable for heavy duty use in industrial and commercial buildings, institutions, clubs, schools, hospitals, hotels and similar buildings.

With in-door configuration for fast, seamless installs, and electric lock options for enhanced functionality and monitoring, the Selector® range delivers smart, secure solutions without complexity.

Built to secure. Designed to lead.

Lockwood. Setting the standard in security.



Selector® 3770 MkII Series
Mortice Locks



Selector® 3772
Short Backset Key Override
DX Digital Mortice Locks



Selector® 3780 MkI Series
Mortice Locks



Selector® 3782
Short Backset Key Override
DX Digital Mortice Locks

VISIT [LOCKWEB.COM.AU](https://lockweb.com.au) for more

Note: Australian Made is not applicable to DX Keypads.

TERMS & CONDITIONS

Product features and pricing in this newsletter are subject to change without notice. Special promotional prices advertised here are for the month the newsletter has been published. However, some offers may commence on or extend beyond the promotional period. Most products have been photographed in-house and are identical to what you will receive. Information presented in this newsletter has been checked and is believed to be correct at the time of printing, however, errors and omissions may occur. LSC can not guarantee prices, specifications, or features of products that may change after printing.