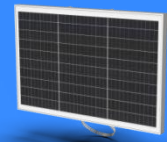


Milesight Solar Panel Modules



	Module Type	S45
Electrical Characteristics	Maximum Power- Pmax(W)	45
	Open Circuit Voltage - Voc(V)	18.44
	Short- Circuit Current - Isc(A)	3.01
	Voltage at Pmax -Vmp(V)	15.93
	Current at Pmax - Imp(A)	2.82
	Module Efficiency - η m(%)	20.37
	Power Tolerance(W)	0, +4.99W
	Maximum System Voltage(V)	700Vdc (IEC / UL)
	Maximum Series Fuse Rating (A)	10A
Mechanical Specifications	External Dimensions	580*385*69mm
	Weight	4.2Kg
	Solar Cells	Mono crystalline 182X36.4mm (3X9pcs)
	Front Glass	3.2 mm tempered glass
	Frame	Aluminum
	Junction Box	IP67
	Output Cables	50cm, length can be customized
	Connector	MC4 Compatible
Temperature Characteristics	Mechanical Load	Front Side Max. 5400Pa, Rear Side Max. 2400Pa
	Pmax Temperature Coefficient	-0.350%/°C
	Voc Temperature Coefficient	-0.270%/°C
	Isc Temperature Coefficient	+0.048%/°C
	Operating Temperature	-40~+85°C
Nominal Operating Cell Temperature(NOCT)	45±2°C	

