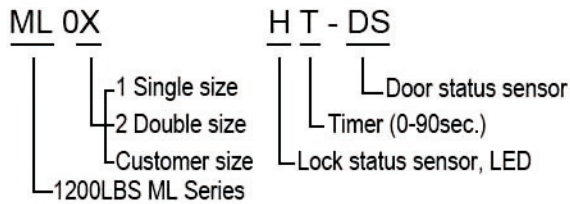


# ELECTROMAGNETIC LOCK

## ML SERIES - SURFACE MOUNTED

### ORDERING INFORMATION

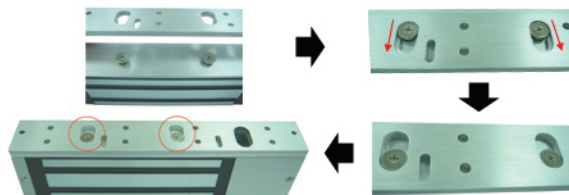


EXAMPLE :

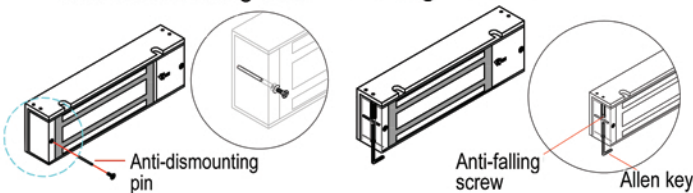
- ML01H – Maglock 1200P w/Lock status sensor

### FEATURES

- Special mounting plate for fast, effort-saving, and simple installation



- Anti-dismounting and Anti-falling function



### SPECIFICATIONS

- Dimensions:
  - Magnet (ML01)-266Lx73Wx40D mm
  - Magnet (ML02)-532Lx73Wx40D mm
  - Armature Plate -185Lx61Wx16T mm
- Dual Voltage: 12/24VDC
- Current Draw: 500mA/12V, 250mA/24V
- Holding Force: about 1200LBS
- Built-in voltage spike suppressor
- With Bi-color LED
- Anodized aluminum housing
- Adjustable mounting plate for appropriate and easy installation
- Special finish: Zinc (on the magnet & armature plate )
- The length can be added according to customer's requests
- No residual magnetism

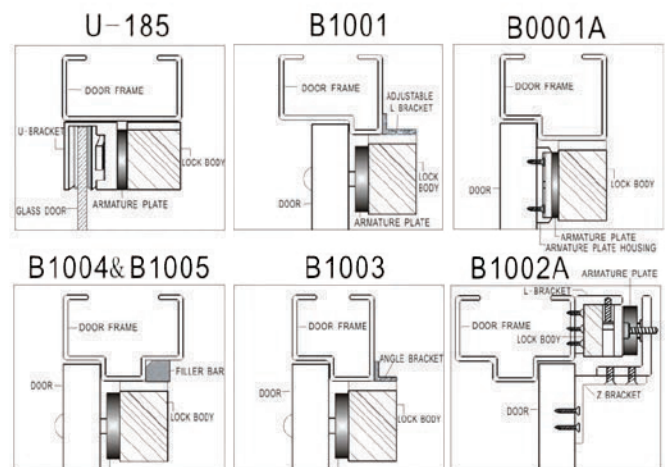


ML01 SERIES



ML02 SERIES

### BRACKETS & INSTALLATION



### APPLICATION

- Horizontal or vertical installation

