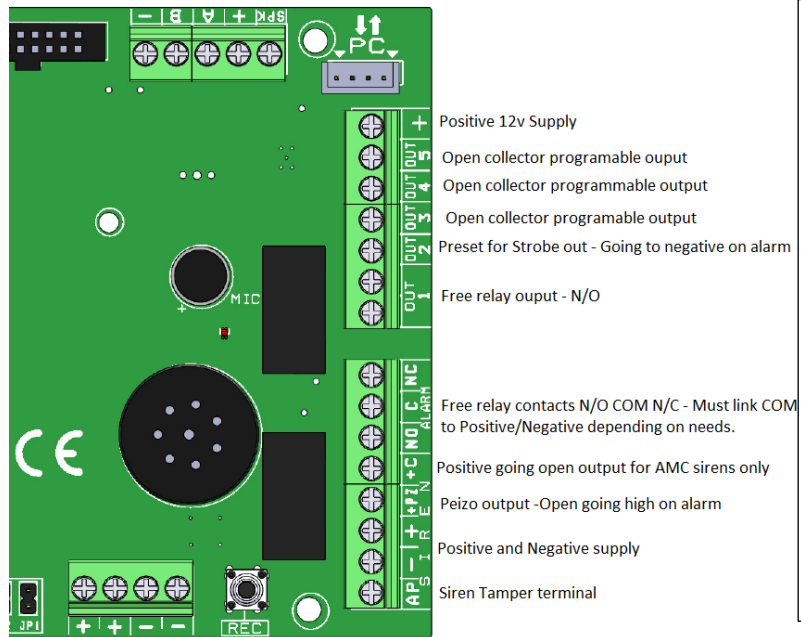


AMC – X824 / X864 – OUTPUTS

Output Descriptions



Panel Programming - Outputs

DBE for (X-K-SERIES)- V1.7.2 build 7 (Siren Test) MODEL X-824

File Com Program

CONTACT ID | TIME ZONES | ARMING LOCK | TEST | PSTN | EVENTS | NETWORK SETUP | EDIT VOCABLES | PRIORITY VECTORS

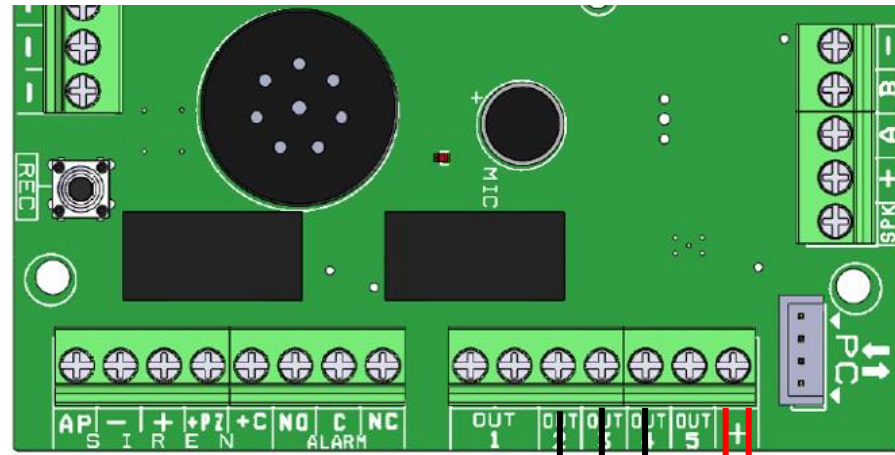
USERS | INPUTS | **OUTPUTS** | PERIPHERALS | TELEPHONES | OTHER PARAMETERS | AREAS | GROUPS | WIRELESS | SYSTEM EVENTS

Messages | Function/Way of Working | Link Phones | Association

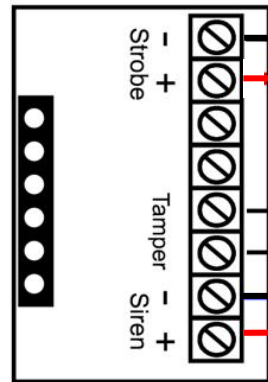
N°	OUTPUTS	FUNCTIONS	OPERATING CONDITION	PULSE LENGTH	DELAY PULSE	POLARITY	AUTO RESET
1	output 1 - -	Disabled output	Always	00:00:00	00:00:00	NORMAL	<input type="checkbox"/>
2	EXTERNAL SIREN 2 - -	Alarm	Always	00:04:00	00:00:00	NORMAL	<input checked="" type="checkbox"/>
3	STROBE 3 - -	Siren memory	Always	00:00:00	00:00:00	NORMAL	<input checked="" type="checkbox"/>
4	INTERNAL PIEZO 4 - -	Alarm	Always	00:04:00	00:00:00	NORMAL	<input checked="" type="checkbox"/>
5	output 5 - -	Disabled output	Always	00:00:00	00:00:00	NORMAL	<input type="checkbox"/>
6	output 6 - -	Disabled output	Always	00:00:00	00:00:00	NORMAL	<input type="checkbox"/>
7	output 7 - -	Disabled output	Always	00:00:00	00:00:00	NORMAL	<input type="checkbox"/>

DISCONNECTED | Ver. FW: 3.72 HW: 1.00 | ID:5 | C:\Program Files (x86)\AMC Elettronica\Michael.cds

AMX824/864



NEOSS



NETHS

