



# NEWSLETTER

*This Month*

WiComm Pro - Installers' Smart Choice

NEW Milesight AI Color+ Technology

SALTO launches XSpereience Centre

# FINGERPRINT PADLOCK ABUS TOUCH™ 57



Security Tech Germany

## Touch it, lock opens!

Secure, innovative, uncomplicated and versatile: The latest product in the padlock family from ABUS can be operated with one hand using a fingerprint, is double-locked and weatherproof.

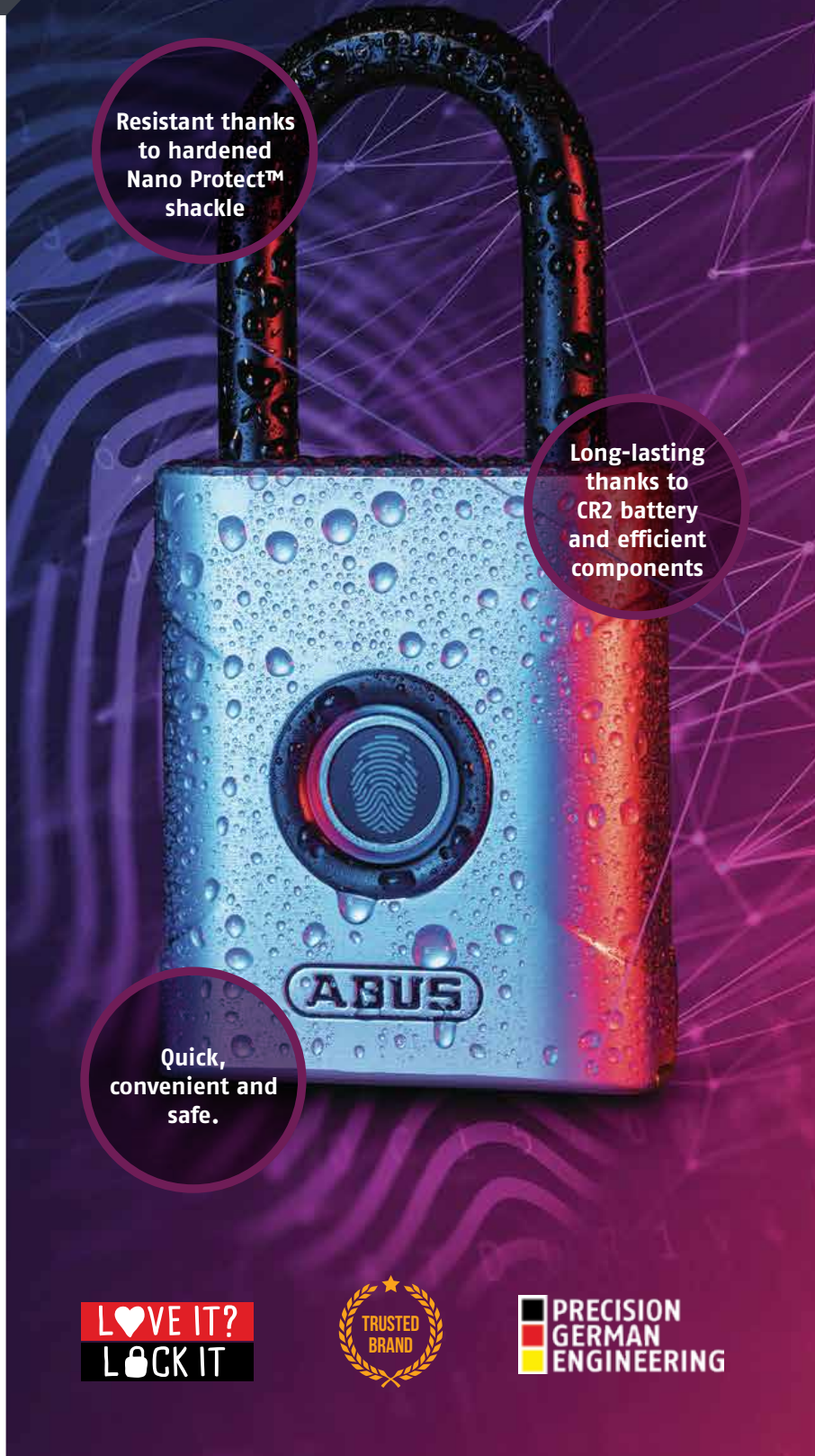
The 360°-capable sensor identifies up to 20 programmed-in fingerprints from any position - no matter how they are placed on it.

### 2 ADMINS AND A TOTAL OF 20 FINGERPRINTS

Two administrators are always registered for the lock with the fingerprint sensor. After that, up to 18 additional fingers can be registered. In total, up to 20 users can be stored.

### HOLDS UP IN ANY WEATHER

Whether in heavy rain or on a dust-dry construction site, two protection classes ensure that the ABUS Touch™ 57 is even more durable and secure: IP66 and IP68. The padlock is dust-tight and its internal components are safely protected from dirt and moisture.



Resistant thanks to hardened Nano Protect™ shackle

Long-lasting thanks to CR2 battery and efficient components

Quick, convenient and safe.



OPERATE WITHOUT A KEY



UP TO 10,000 OPENINGS



360° RECOGNITION



SPECIALLY HARDENED SHACKLE



20 FINGERPRINTS CAN BE STORED



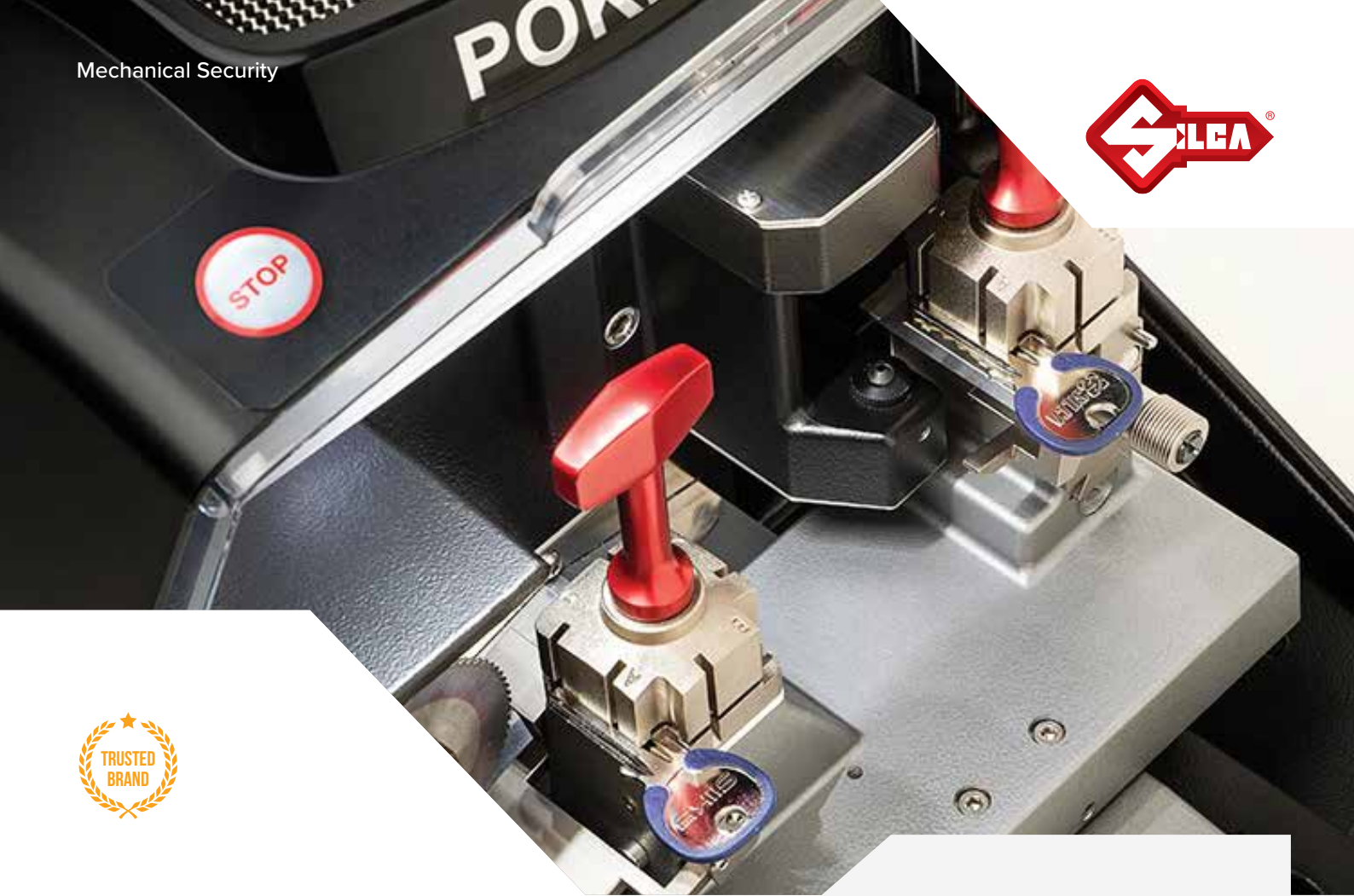
IP66 & IP68: SUITABLE FOR OUTDOOR USE

LOVE IT?  
LOCK IT



PRECISION  
GERMAN  
ENGINEERING





## THE DUPLICATOR FOR THE NEXT GENERATION

Mechanical duplicating machines have been a mainstay of locksmith shops since the 1860's when Linus Yale invented the modern pin tumbler cylinder and associated keys.

Despite improvements in technology, the concept remained relatively unchanged – until now.

Silca revolutionises the standard duplicator by introducing laser reading and electronic carriage control. No longer a mechanical tracer point needs to run over the original key.

Springs, handles, cogs and levers give way to precise electronic control, stepping motors, lasers and LED lighting.

SD851467ZB

## SILCA POKER PRO FEATURES

- Faster
- More accurate
- Safer and easier to use
- Longer lasting cutter
- Intuitive LED status indicator
- Single button start
- Compact footprint
- Most swarf is captured internally

*Free yourself from the machine! Get it to do the work for you – effortlessly, accurately, safely.*





EST. 2012



2022 | 4TH FINALIST

# NIC SMITH

ROCKHAMPTON LOCK AND KEY (QLD)

**Please provide a short personal biography about yourself.**

I am 27 and grew up in Central Queensland. When I was a year 10 student, I was enrolled in a vocational program that allowed me to do work experience with a few different trades. Luckily enough I stumbled upon an apprenticeship opportunity with a well-known company in Gladstone. After working with some other trades, I knew locksmithing was the trade for me. It offered something different every day which suited me because I can't sit still!

I was offered full time employment at just 15, it was a huge leap into the real world, but I took the opportunity gratefully and completed my apprenticeship in 2014 after winning the Apprentice of the Year award. Since then, I was offered an opportunity to become a manager in a hands-on role in Rockhampton. This has been one of my career highlights as I have learnt so much in the last 6 years from having great working relationships with staff, clients, and suppliers to learning how to engage with apprentices and pass on the knowledge that I have built up over the last 12 years in my trade.

**What are some of the skills and abilities necessary for someone to succeed as a locksmith?**

The skills required to be a locksmith is a very long list. Some of the most important skills and abilities include quality control and lateral thinking. Quality control is one of my favourite qualities in a locksmith, not everybody is the best of the best with 20 years of knowledge up their sleeve! A locksmith who carries a good quality control awareness and process will go a long way. It is important to ensure the product or service you are providing to a client has excellent attention to detail.

A locksmith who possesses the skill to think laterally thought a process will be successful. It is the ability to visualise mechanically how something will work even before you put it into practice.

As a young locksmith who has travelled all over QLD to regional and

remote areas where there isn't a shopping centre let alone a local LSC! - sometimes you must make something out of nothing, and that separates the good from the best.

**What key issues do you think will affect the locksmith industry in the coming decade and how do you think these should be approached?**

Some general aspects of locksmithing are performed by unlicensed, unskilled, and unethical people. It is up to the locksmithing community and associations to spread the awareness however, as an individual you may not be able to stop this immediately.

What we can do as individuals is educate and invest in ourselves. There are many aspects to our trade as locksmiths and also many diverse opportunities to specialise in multiple areas. If we invest in ourselves and provide ourselves with the additional training and education that is on offer, we will be able to continue to thrive and increase our customer base.

Another current issue that has risen through these tough times is the supply chain shortage of mechanical and electrical components. again, this is a global issue and not something the individual can fix however, I believe education plays a huge part in this crisis for locksmiths and it is very important that we educate ourselves with product knowledge and create good relationships with our suppliers. This helps by knowing who to call when there is a 6 month wait on a product, or what alternative is in stock that we can offer the client.

**Tell us why you should be Australia's best young locksmith.**

I believe over the last 12 years of my career I have made a positive impact on the industry, my colleagues, suppliers and my young apprentices that I train. This award is a token to those who have helped me along the way in my career. Although I am only 27 and I still have an extremely long way to go, this award recognises my hard work and dedication to this industry.

# PRODUCT SPOTLIGHT

visit [lsc.com.au](http://lsc.com.au) to see  
SecuRam® SafeLogic complete range!

## SECURAM SAFELOGIC 1801/BASIC SAFE LOCK SPRING BOLT

- 9 volt battery powers the system
- 10,000 openings on a 9 volt battery
- 2 Codes: Manager Code and User Code
- 5 minute Penalty LockOut upon entry of 4 incorrect codes
- Standard footprint and mounting pattern, easy retrofit for any mechanical or electronic safe lock
- SureLock battery compartment for easy battery replacement, without removing the entrypad from the safe door

SECEL0801SLSPR



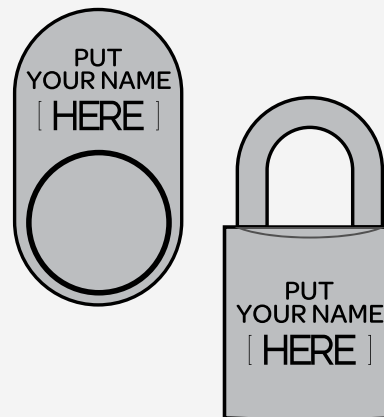
## SECURAM

## BUILD YOUR BRAND WITH PERSONALISED ABUS PADLOCKS AND CYLINDERS

Get your business name and contact details on every gate, fence, or entrance with a personalised ABUS Padlock or Cylinder.

We pride ourselves on the quality and precision of our personalisation services. Our friendly in-house graphic design team are happy to work with you, to ensure the quality and accuracy of your final designed.

Ask your Account Manager for more details about our laser etching and embossing services.



## BDS MAGNETIC GATE LATCH

From the makers of the BDS key switch, the new BDS mortice magnetic gate latch is a versatile latching solution for most entry gates.

Designed to be morticed into the gate post, it will work with a standard euro cylinder or a Borg 2000 series sized keypads. It suits 40mm & 50mm posts. When fitted with a BRAVA euro cylinder it is neat and less obtrusive than other gate locks, making it the smallest gate latch solution on the market.

TML25



**FREE DELIVERY** | for all orders over \$150

LSC<sup>1</sup>



# WH-SOFTWARE MAINTENANCE PROGRAM



## Did you know WHS add significant additional value with their ProMaster Maintenance program?

In addition to giving you access to technical support, the latest version updates, newest software features and enhancements, the WHS Maintenance program lets you:

### - Utilise the Pm8 Mobile Platform

- Push jobs and pinning out to mobile devices via the WHS secure server environment
- Remove paper trails and waste from your business

### - Enjoy a complimentary in house installation of ProMaster8 Key Manager for your own use

- Demo to your customers
- Support your customers
- Use it for your own key storage and issue needs within your business

### - Receive early notifications of upcoming training courses

### - Receive complimentary places on selected training courses



# LATEST ADDITION TO THE SILCA REMOTE AUTO OFFERING



NEW

### Silca Remote Auto 3B Flip Blade - Suit Fiat Iveco

Supplied configured for the Delphi system but can be converted easily to Marelli by pressing the function buttons in the sequence explained in the accompanying instruction leaflet.

Silca remote auto offers 60 high quality remote, slot & prox keys similar in design to original keys, supplied with blades and ready to program with Smart Pro or similar. Don't compromise on quality & reliability.

*Refer [lsc.com.au](http://lsc.com.au) for applications list*

SSIP22R34



# UPCOMING 2022 TECHED COURSES

Location: Distribution & Training Centre Melbourne.

# LSC

## TRAINING & SUPPORT



**ADP202 | 23 NOVEMBER**

### Transponders and Diagnostic Key Programming

This course focuses on a variety of manufacturers. Utilising vehicle simulators and various tools participants will learn about immobiliser configurations, transponder preparation and programming techniques.



**ADP213 | 24 NOVEMBER**

### Volkswagen Group Key Programming Solutions

This intermediate level course has been designed so that participants gain an understanding to the design and programming of the diverse range of platforms found in the Volkswagen Group.



**ADP222 | 25 NOVEMBER**

### PSA, FCA & Renault Groups

Through a mix of theory, demonstrations, and practical exercises this course will dispel the myths around European manufacturers and equip technicians with the knowledge to program Euro vehicles successfully.

## ADVANCED DIAGNOSTICS SMART PRO SOFTWARE

**NEW**

**ADA SMART Pro Software Nissan Mitsubishi Renault ADS2326**  
Key programming software for late model Nissan, select Mitsubishi and Renault. All keys lost requires the ADC2017 cable.

*Refer applications lists, CARLAB & MYKEYSPRO for further detail.*

SD756299AD

## ADVANCED DIAGNOSTICS

TRUSTED  
BRAND



**CLICK & COLLECT** | free pick-up from our branches

LSC

# WICOMM PRO

## High-end Professional Wireless Intrusion System

NEW

*Fully wireless panel with video verification!*

The new WiComm Pro is a high-end professional wireless intrusion system from RISCO Group, designed to meet the demands of installers and end-users alike. Released as an upgrade from the existing Agility™ 4 system, the WiComm Pro features a sleek new design that is 58% smaller than the Agility™ 4 panel.

- Wireless Keypads: 3
- PIR Cameras: 8
- Keyfobs: 8
- Frequency: 433Mhz



### Fast & Simple Installation

WiComm Pro benefits from a smart mechanical design which means configuring the panel, adding the communications module and mounting it on the wall has never been easier so you can spend less time on site.

### Superior Performance

The WiComm Pro features an enhanced RF range that will help avoid signal problems on site. Installers can optimise and extend their WiComm Pro system with the use of a 2-way wireless repeater. Each panel can support up to 4 repeaters, which can in turn, each support up to 32 zones.





- **Wireless Zones:** 32
- **Area Partitions:** 3
- **User Codes:** 32
- **Event Log:** 1,000



## Discreet Wireless Detectors

RISCO's range of Wireless Detectors, Camera PIRs, and Door/Window Contacts benefit from an innovative and clean design ideal for end users looking for a contemporary look and feel in their premises.

## Smartphone App



A single intuitive app enables full control of security, safety and smart home features, sending push notifications and images immediately to the smartphone, allowing homeowners to decide the best course of action within seconds. Initiating live video, controlling smart home devices, and managing all system detectors - all with a single click, on one interface

# BORG 7000 SERIES UPGRADE



COMING SOON

The brand new BL7001ECP represents the hardest-wearing unit on the market. Designed for high traffic areas, the BL7001ECP provides durable and robust access control.

### Key override options

The BL7701ECP models have a built-in key override in the lever handle; this utilises a SFIC (small format interchangeable core) cylinder. This is a new type of key override system for Borg Locks, whereby rotation of the key engages the lever handle, making it ideal for use with potentially heavily sprung third-party locks.

### Finishes

All models are available in the stainless-steel finish for internal or sheltered external environments and our proven Marine Grade Pro (black) finish for those fully external or Marine applications.

### Features:

- Available in MGPRO or satin stainless finish
- ECP on door code change in seconds
- Passage function
- Non-handed keypad
- 70 mm backset



**Borg Heavy Duty Digital Lock with ECP**  
BL7701SS



**Borg Marine Grade Digital Lock with ECP**  
BL7701MGPRO

*Marine grade pro*



## KEEP YOURSELF ORGANISED WITH GTT TOOLS FROM LSC

Keep yourself organised and ready for every type of job with GTT Tools from LSC. Here are some new models to get you out of trouble on all kinds of jobs:

NEW



*Pocket sized*

**The Mini Jim**  
Ideal for looting latches and gaining entry to residential properties  
GTT540



**The Under Door Tool**  
A favourite for hotel locks or escape configured leversets  
GTT520



**The Quick Jim**  
Stainless steel and durable to give you extra grunt on those latches  
GTT550



*For lever style padlocks*

**Slimline Picks**  
Easily slip open older style Master lock padlocks  
GTT190



LOVE IT?  
LOCK IT

PRECISION  
GERMAN  
ENGINEERING

## ABUS 74/40 Series "When safety counts"

The ABUS 74/40 Series safety lock is a lightweight aluminium padlock, designed for safety, easy identification, available in ten colours. With the body and shackle insulated against electric shock perfect for isolating equipment or machinery. Key retained, key can only be pulled out when the padlock is locked when safety is paramount.

Partcode:

7440WHKD, 7440YELKD, 7440BRNKD, 7440GRNKD, 7440BLKKD,  
7440BLUKD, 7440GRYKD, 7440ORGKD, 7440PURKD, 7440REDKD

## ABUS 74/40 Features

- NANO-PROTECT™ shackle
- Intrinsically safe, key retaining
- Compact and lightweight
- High precision 6-pin cylinder
- Automatic locking - shackle can be snap shut
- Solid aluminum core with steel shackle
- Body and shackle insulated against electric shock
- Supplied with notification stickers
- Available in KA, KD & zero bitted
- Keyable and Master keyable customisation



ABUS 74/40 Sub-assembled Padlock  
7440SUBASSOB

also available in 10 colours!



ABUS 74/40 Plastic Sleeve & Boot  
7440SLEEVERED



ABUS Hasp Lockout Safety 25mm  
AB701RED



ABUS Hasp Lockout Safety 38mm  
AB702RED



# AI COLOR+ MINI BULLET NETWORK CAMERA

NEW

With an F1.0 super aperture and an advanced sensor, Milesight Color+ series can deliver colourful, high-resolution images in low-light conditions or at night-time. Enjoy excellent image performance for a wide range of monitoring scenarios such as outdoor areas, parking lots, retail environments, and more.

- **Full-colour image performance;** combined with the White LED, the Color+ camera delivers colourful images in the dark or at night for most monitoring scenarios. The warm light lamp helps to avoid glare for a better user experience.
- **F1.0 Super aperture;** large aperture (F1.0) allows more light to pass through to the sensor, giving a better low illuminance and higher definition image.
- **4K Video viewing experience;** user can enjoy up to 4K resolution within the Color+ series.
- **AI Video analytics;** intelligently filter objects to focus on human and vehicle detection in multiple events such as Region Entrance, Region Exiting, Loitering, Advanced Motion detection and more.
- **IP67 & IK10;** this series is designed for outdoor use in challenging conditions, and features a an IP67 weather proof rating and an IK10 vandal protection rating.

Color+



**Milesight 8MP AI Color+ Bullet Camera**  
MSC8164UPD

Color+



**Milesight 5MP AI Color+ Bullet Camera**  
MSC5364UPD

## MILESIGHT VMS ENTERPRISE

The recently released Milesight VMS Enterprise is an intelligent video management software designed for medium to large projects. The system supports both Milesight and third-party cameras, and features on-server AI capabilities.

*Get your FREE trial license*

- Compatible with Milesight and 3rd Party Cameras
- On-server AI Analytics
- Multiple fisheye dewarping modes
- Easy PTZ control with PTZ panel and presets
- Advanced client/server architecture allows for remote monitoring and simultaneous multi-user logins
- Smart search of motion detection
- Self-adaptive live view layout to ensure full use of screen space available

*Test run the new VMS with a 180-day FREE trial!*

Milesight



# HOW MUCH CONTROL DO YOU NEED?

# CREONE



## CONTROL

The KeyRack and KeyBox KeyControl series identify and keep a check on all of the keys. On each key ring, there is an IntelliPin key peg that is placed in key strips on the wall or in cabinets. The keys are then managed digitally and you know exactly who has which key at all times. The KeyWin6 software manages the key cabinets, and registers and saves all events.



## ACCESS

The Basic and System series are two simpler series with a robust design that provides secure storage. The storage systems do not have any identification; instead, they are administered locally by entering compartment acknowledgments via the keyboard. All storage systems are expandable by up to 15 Expansion cabinets in any combination. In other words, you can control 96 compartments with the same system, via the very same keypad. The System series can also be administered via KeyWin Light.

# PROUDLY AUSTRALIAN FOR 40 YEARS



Market leader of premium door and window hardware, Austral Lock by Gainsborough, combines industry innovation with 40 years of expertise to provide locking solutions for windows, security screen doors and sliding patio doors.

Established in Melbourne in 1982, Austral Lock is proudly celebrating 40 years of Australian manufacturing and patented innovation excellence. Beginning as a small family-owned business, it is now part of the global leader in security – Allegion. Allegion’s family of brands include API, Brio, FSH, Gainsborough Hardware, Legge and Schlage.



With 40 years of local manufacturing experience and access to global technologies, Austral Lock offers a wide range of products with a focus on function and a reputation for reliability. Excellence in design and rigorous approach to quality means Austral Lock products are often imitated but never copied.

Austral Lock prides itself on helping Australians feel safe with premium security hardware designed, tested and assembled in Brooklyn, Victoria. With Austral Lock by Gainsborough, you know you can leave with confidence.



# SALTO LAUNCHES XSPERIENCE



## SALTO SYSTEMS LAUNCHES INNOVATIVE FIRST XSPERIENCE CENTRE IN AUSTRALIA

### Market-leading electronic-access-control company SALTO Systems launches its first Australian XSpierience Centre.

Located within Cremorne, Melbourne's technology and creative precinct, SALTO's immersive XSpierience Centre showcases SALTO's innovative smart electronic-access-control, from a wide range of electronic locks and lockers to state-of-the-art on-premise and cloud software solutions. Visitors not only engage with SALTO's cutting-edge solutions portfolio within an interactive framework, they are also given a sneak peek into the company's exciting innovation pipeline.

SALTO's flagship XS product range, named because of its auditory similarity to "access", has lent itself neatly to the naming of SALTO's XSpierience Centre, a place in which you can "XS", or access, all things SALTO and the future of smart electronic access control.



The XSpierience Centre is sectioned according to technology platform and vertical, or industry, with a feature SALTO-blue Welcome Wall of GANTNER locker locks for visitors to lock and securely leave their belongings while enjoying the space. GANTNER, an Austrian company acquired by SALTO in 2020, provides a holistic solution to end-of-trip and staff locker access that seamlessly integrates with SALTO and the overall XSpierience Centre journey.

With an outstanding heritage brick façade and rooftop terrace, with uninterrupted 360-degree views, SALTO's architecturally designed XSpierience Centre is a luxurious contemporary space that is being utilised for training sessions, thought-leadership panel discussions, industry-networking events and client/partner entertaining.

As a nod to its Spanish headquarters, paella and Estrellas on the rooftop as the sun sets over Melbourne's skyline is also potentially part of the experience should you be so lucky to be a visitor of Australia's first SALTO XSpierience Centre.



locking for life

# GIVE YOUR CUSTOMERS & YOURSELF PEACE OF MIND WITH BRAVA LOCKS

Locksmith professionals choose BRAVA Urban and Metro Locks for their quality and reliability. BRAVA locks are suitable for domestic and commercial applications. Choose BRAVA for proven reliability!



**URBAN SERIES**



**METRO SERIES**



**OL SERIES**

## TERMS & CONDITIONS

Product features and pricing in this newsletter are subject to change without notice. Special promotional prices advertised here are for the month the newsletter has been published. However, some offers may commence on or extend beyond the promotional period. Most products have been photographed in-house and are identical to what you will receive. Information presented in this newsletter has been checked and is believed to be correct at the time of printing, however, errors and omissions may occur. LSC can not guarantee prices, specifications, or features of products that may change after printing.