



# Keeping it local

Proudly Australian



# NEWSLETTER

*This Month*

Lockwood | Proudly Australian

Update & Save with PM8

ABYL First Finalist

# Don't let chain be a weak link in your security

LOVE IT?  
LOCK IT

PRECISION  
GERMAN  
ENGINEERING



## ABUS Security Chain

ABUS High Security Chains, made of special hardened steel, are corrosion resistant. Available in convenient set lengths with a protective fabric sleeve to prevent damage.

Excellent security for a wide range of applications. Available in a wide range of lengths & diameters, also in bulk drums for customised lengths.

### ABUS CHAIN SQUARE

- 6MMx110CM 6KS110BLK
- 8MMx40CM 8KS40BLK
- 8MMx110CM 8KS110BLK
- 8MMx110CM 10KS110BLK
- 10MMx110CM 10KS110BLK
- 10MMx170CM 10KS170BLK
- 10MMx200CM 10KS200BLK

### ABUS CHAIN LOOP

- 12MMx120CM 12KS120BLK
- 12MMx250CM 12KS250BLK

### ABUS BULK CHAIN

- 8MM 30.5M 8KS BULK
- 10MM 30.5M 10KS BULK
- 12MM 19.2M 12KS BULK



**ABUS CHAIN SQUARE**  
6MMx110CM

6KS110BLK



**ABUS CHAIN LOOP**  
12MMx120CM

12KS120BLK



**ABUS KS CHAIN 8MM**  
BULK 30.5M

10KS BULK

# AUSTRAL ULTIMATE LOCKSET



The Austral Ultimate lockset includes a Caretaker one-way locking function that enables the lock to be “snib locked” from the outside by operation of a Caretaker key. The Caretaker key cannot be operated to unlock the lock.

- Mortice hinged security door lock
- Slotted strike plate and bolt profile
- Reversible
- Pivoting parrot beak bolt
- Snib and cylinder locking
- Unique Caretaker feature
- Self-latching bolt
- Snib will not override key
- Use with HD16 triple lock kit



**Austral Ultimate Lockset  
Black (Replaces HD8)**  
ALULTBLK



**Austral Ultimate Lockset  
White (Replaces HD8)**  
ALULTWHI



**Austral Ultimate Lockset  
Primrose (Replaces HD8)**  
ALULTPRM

## BORG MATT BLACK SCAR PLATES

Ideal when using Borg Marina Grade Pro finish locks. The new matt black scar plates are perfect when replacing entrance sets. Hide any door damage & paint marks. Give your customers a professional finish, match the scar plate to the Marine Grade Pro locks. Can be used with any Borg 2000, 4000 or 5000 Series Marine Grade locks.



**NEW**



**Stainless steel scar plates to suit Borg BL2000/BL4000 series locks. Replace a KNK entrance set with Borg 2000/BL4000 series digital lock.**

- Dimensions 198 x 68 x 1.5 mm
- Borg 2000 series digital lock not included
- Stainless steel plates powder coated Matt Black

BLSPLTMB



**Stainless steel scar plates to suit Borg BL5000 series locks. Replace a KNK entrance set with Borg 5000 series digital lock.**

- Dimensions 198 x 68 x 1.5 mm
- Borg 5000 series digital lock not included
- Stainless steel plates powder coated Matt Black

SPBL5001MB

# ABYL

2023 | 1ST FINALIST

## TOM DARTNALL

BLA LOCKSMITHS | QLD



### Please provide a short personal biography about yourself

I am 28, born in Toowoomba, and grew up in the greater Brisbane area. When I was younger, I did work experience with my father (electrician) and a few of his close friends (carpenters) and I found these skills were transferable to locksmithing.

I started locksmithing in my early 20s and enjoyed experience in both domestic and commercial work and more recently have made the transition to automotive technician. I now predominantly do automotive work but will help the Locksmithing & Access Teams if they require some help. I am currently involved in training an apprentice and it has been really rewarding passing on my knowledge and good habits/skills to be a great locksmith.

### What are some of the skills and abilities necessary for someone to succeed as a locksmith?

Good communication skills, both verbal and written, are essential in the industry. Given you are often dealing with people's security issues, you need to be able to converse with confidence and reassurance when necessary.

The ability to keep your cool in a stressful situation is very important in our industry. A large amount of the situations we find ourselves in will have distressed customers who are flustered because they are locked out or have been broken into so patience and reassuring confidence is key so that they can have peace of mind that they are getting the best outcome in a bad situation.

### What key issues do you think will affect the locksmith industry in the coming decade and how do you think these should be approached?

One of the issues the locksmithing community is facing is the misinformation spread through online forums which give customers unreasonable expectations around: pricing, best security options, fitting and servicing options for their locks (On many occasions the locksmith removes a lock from a door and a bunch of graphite falls out).

This is a difficult issue to deal with especially given the increase in DIY home renovations. However, perhaps trying to work with retailers could be useful to have signage etc. that a locksmith is required for properly fitted locks and to give homeowners peace of mind regarding their security.

### Tell us why you should be Australia's best young locksmith.

Throughout my career, I have broadened my knowledge of my locksmithing trade. Learning as much as I can in most divisions of locksmithing; Cabling, Automotive key replacement, lock / electric strike fitting, Master keying and "gain entry" techniques. I am a versatile employee, allowing people to book me into most jobs whether it is a rekey, a mag lock that has failed or a lost all keys situation for a vehicle. In doing this, my fault-finding has increased and so has my attention to detail when it comes to completing the job. I pride myself on making sure everything looks neat and professional for the customer.

In summary, I love my job, I love learning all the new technologies and most of all I love being able to help people. I often get many comments that I have been so helpful, and the clients are very appreciative of the effort I take to make them feel at ease in what are often stressful situations.

# PRODUCT SPOTLIGHT

visit [lsc.com.au](http://lsc.com.au) for more information about S&G government approved locks!

## S&G GOVERNMENT APPROVED LOCKS

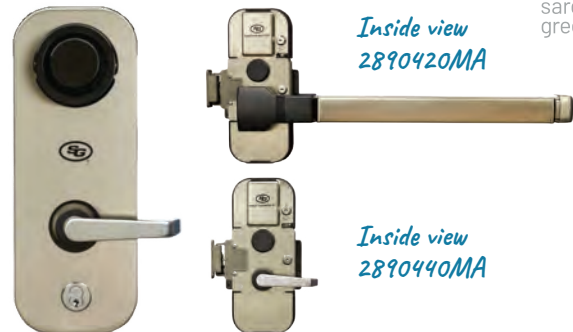
### 2890-420MA and 2890-440MA

The S&G 2890B provides both secure entry and life safety in one integrated solution. It works in conjunction with both approved combination locks to provide the highest level of safety and security of SCIF's (Sensitive Compartmented Information Facility)

*Available in centre locking module with lever and centre locking module with panic bar.*



sargent & greenleaf



Inside view  
2890420MA

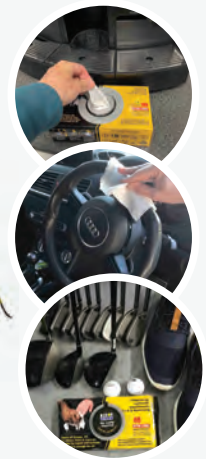
Inside view  
2890440MA

## RIDOF® WATERLESS WIPES



Ridof® Waterless Wipes are a waterless, nontoxic, moisturising hand cleaning product. Everyone's hands get dirty especially locksmiths & these have a multitude of uses. Great for service vans and workshop.

- No toxic solvents
- Waterless hand cleaning
- Amazing cleaning power
- Deep cleansing
- Fresh and moisturising
- Water saving /Eco Friendly
- Safe & very convenient to use
- Cost effective
- Reduces workers down time
- Hundreds of uses
- Eliminates constant visits to the wash room



WW40PACK, WW80PACK, WW336PACK

## BORG MARINE GRADE DIGITAL LOCK WITH ECP

The Marine Pro Series range of products has been developed specifically for marine applications. Now with on-door Easi-Code Pro code changing.

### Features:

- Fully mechanical digital lock with key override
- Fully reversible
- Suits doors from 35-80 mm thick
- Up to 1024 codes to choose from
- Available in MGPRO or satin stainless finish

BL7701MGPROECP



*No longer is it necessary to remove the lock and tumblers, the code can be changed with the lock on the door.*



# DIGITAL COMBINATION LOCKS



Designed to complement our traditional locking products, this diverse range of digital combination locks eliminates the need for keys and reduces associated costs. With many different designs and features, these adaptable locks are supplied with choice of cams to suit almost every application.



**COMING SOON**

**Nimbus RFID Digital Lock**  
Nimbus 3963



**3780 Apex Digital Cam Lock**  
LF3780APEBLK



**3950 Horizon Digital Cam Lock**  
LF3950HORBLK



**3700 Gemini Digital Cam Lock**  
LF3700GEMVBLK

## UPGRADING TO VERSION 8

It's now over 4 ½ years since WH-Software launched ProMaster Master Keying Version 8, and in that time hundreds of customers have upgraded to take advantage of the latest features, security enhancements, usability improvements and improved support for common keying types.

**UPGRADE & SAVE!**

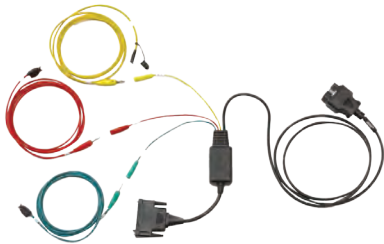
Customers who upgrade receive a 40% discount on the purchase of an equivalent ProMaster Master Keying Version 8 package (excluding maintenance). From 1st October that discount will be reduced to 20%, and from early 2024 that discount will be removed all together.

*If you're still running Version 7, talk to your Account Manager now - don't miss the chance to upgrade and save!*



# TOYOTA ALL KEYS LOST SOLUTIONS

## ADVANCED DIAGNOSTICS



### SMART Pro Toyota 'H' Bladed All Keys Lost Cable ADC2016

- Solution for Toyota 'H' bladed when all keys lost.
- Utilised to extract transponder key data from the vehicle.
- Connects to specific fuse locations and the key unlock warning switch in the vehicle.
- Does not require the removal of the immobiliser ECU from the vehicle.
- Works in conjunction with and requires the emulator ADC2015.
- Support materials and end user guide available via SMART Pro device, CarLab & MYKEYSPRO

SD755976AD



### SMART Pro Texas DST Emulator for Toyota

- Used for when all proximity keys are lost.
- Connects to the SMART Pro by way of USB.
- Key data read from the vehicle by the Smart Pro is stored in the emulator.
- The emulator becomes a master key.
- Using the emulator the operator can program new proximity fobs to the vehicle.
- Also used in conjunction with ADC2016 for Toyota 'H' bladed key systems.

SD755650AD

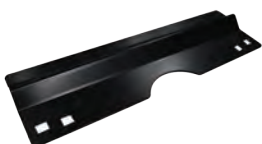
\*\*At the time of release the ADC2015 emulator covers select DST128 proximity fobs only, with further coverage to follow.

## BDS BLOCKER PLATES

Popular range of BDS blocker plates are now available with black powder coat option. Supplied in trade packaging with fixings included.



NEW



### BP6860EBLK

- Suit entrance sets
- 275mm x 80mm x 2mm



### BP6860MBLK

- Suit mortice locks
- 275mm x 80mm x 3 mm



### BP6860ELECBLK

- Suit Electric Strikes
- 275mm x 80mm x 3 mm



### BP6860E7BLK

- Suit EU EV - Entrance Set
- 275mm x 80mm x 2mm



### BP6860BBLK

- Plain no cut out
- 275mm x 80mm x 2 mm

# Keeping it local

Proudly Australian

Australian partners  
SINCE 1926

## DESIGNED WITH THE EXPECTATIONS AND NEEDS OF AUSTRALIANS IN MIND.

An international leader in the design and production of mechanical and electromechanical locking and unlocking products, ASSA ABLOY Opening Solutions is one of Australia's most successful and innovative hardware manufacturers – and Lockwood is the leading brand in the Australian locking industry.

With a well-established reputation for high quality products, Lockwood provides a wide range of Australian-made commercial and industrial locking solutions including mortice locks, electromechanical products, cylinders, barrels, keys, pins and springs. In addition, ASSA ABLOY Opening Solutions Australia manufactures Lockwood brass and stainless steel door furniture for the residential housing sector.

With an ethos focused on local manufacturing, ASSA ABLOY Opening Solutions offer unique

product solutions designed and developed in Oakleigh with a dedicated R&D team and a workforce of more than 300 production staff. Other benefits of local manufacturing include shorter lead-times, plating and finish customisation, and compliance with Australian standards and regulations.

LSC's relationship with ASSA ABLOY Opening Solutions dates back many decades to when Lockwood's founder John F. Ogden began his padlock manufacturing business in Oakleigh in 1934. LSC founder, Aubrey Johnson (the company then known as AF Johnson and Co) recalled buying padlocks from Ogden as far back as the 1930s. This relationship continues today. Together, ASSA ABLOY Opening Solutions and LSC provide appropriate market solutions, with no compromises.





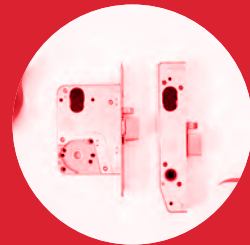
1800 Series



Sliding Door Mortice Locks



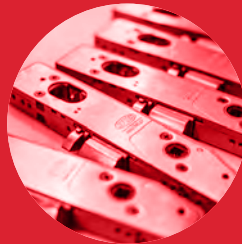
Electric Mortice Locks



Electric Strikes



Mortice Locks



Keys



# BRAVA COMMERCIAL LOCKING



locking for life



BRAVA has an extensive range of commercial locking products to meet even the most demanding customer requirements. Whether its enhancing or upgrading their security for their commercial premises you can trust BRAVA to have what you need. The range includes heavy duty deadbolts, commercial knobsets and leversets, and high quality commercial cylinders



**Double Cylinder Urban Deadbolt**  
D362B



**Double Cylinder Metro Deadbolt**  
BP210LISSS



**Double Cylinder Mortice Lock**  
07220350



**70mm Entrance Knobset**  
EA3000SS70



**70mm Entrance Leverset**  
EV6000SC70



**70mm Entrance Leverset**  
EV8000SC70



**6 Pin Double Euro Cylinder**  
BRM905551CP



**LW5 Oval Cylinder**  
5070USCKD



**Threaded Body Round Cylinder**  
BRM80466SCKD

# SMART MEANS KEEPING IT SIMPLE



Security Tech Germany



ABUS make the most comprehensive range of KeyGarages™ to securely store your keys or small valuables. Share access via traditional mechanical code or with the Bluetooth KeyGarage™ share access via your phone.

The KeyGarage™ 787 Smart-BT for wall mounting is a great option for holding up to 20 keys, three car keys or up to 30 plastic cards on a temporary and flexible basis for various groups of people.

As an admin, you can generate a six-digit key code for others in the app, which will give them access to whatever is stored in the smart KeyGarage™ without the use of a smartphone; e.g. for guests in a holiday rental, workers, cleaning service, mobile care services and more.

KG787BTC



*Optional extra:*

Shackle only suit SMART  
– Bluetooth KG787BTSHKL

*Great for rentals holiday homes!*



## 6 DESIGN REGISTRATIONS

Secure6 A profile has been with us for 9 years now and unfortunately September 2024 sees the end to its design registration protection.

## UPDATE

We still have many Secure6 profiles, and they still have many years to run. Below is listed the remaining profiles and their expiry dates.

**Secure6 B – 2029**

**Secure6 G, H, I, J – 2029**

Secure6 C Profile will be released early in the New Year and will have an expiry date of 2033. Secure6 C will become the new open profile to support Secure6 B. It will obviously be a member of the ABC family master key as well for anyone needing to do larger multi profile systems.

*The Secure6 suite of profiles offer great value for money with most barrels still less than \$7.00 each plus GST and readily available from your local LSC branch.*



# SECURE6

# THE FUTURE OF VIDEO MANAGEMENT

# Milesight

We're pleased to introduce the Milesight AI Box and All-in-one VMS Appliance. You can add these products independently to a system or combine them to create a powerful VMS solution.

AVAILABLE NOW



## Small Box, Big AI Power Milesight AI Box

Milesight AI Box is an edge AI computing product, that empowers your system with unparalleled AI video analytics capabilities. Seamlessly integrating with cameras, it provides a standalone solution for comprehensive video analysis. Additionally, the deep integration with Milesight VMS Enterprise offers a truly unified experience, while it also effortlessly transfers analysed results to third-party VMS or NVR through HTTP.

BX108A



### PERIMETER ALERT

Tripwire, Intrusion, Park, Exit



### OVER-CROWD MANAGEMENT

Regional People Counting, Entrance & Exit People Counting



### BEHAVIOURAL ALERT

Fall, Smoke, Call, Watch Phone, Run, Sleep Detection



### OBJECT MANAGEMENT

Sundry Detect, Forgotten Goods, Goods Guard



## Standalone Appliance, Scalable Growth Milesight All-in-one VMS Appliance

Milesight All-in-one VMS Appliance provides a systematic and professional solution with video input, storage, decoding and device management functions, which is pre-loaded with latest Windows-based Milesight VMS Enterprise system and 36 licenses to deliver a ready-to-deploy solution.

VE0602A



## RISCONTROL ALARM & SMART HOME CONTROLLER

Meet the new RisControl Controller from RISCO Group; the ultimate integrated solution that combines professional hybrid panel control with advanced smart home and video solutions.

This 8-inch intuitive touchscreen keypad is designed for use with the LightSYS Plus hybrid security system for alarm and surveillance control, as well as a wide range of Z-Wave smart home devices including light bulbs, door locks, thermostats, blinds and smart plugs.

Unlike other integrated Alarm and Z-Wave controllers on the market, the RisControl Z-Wave touchscreen can be used as a standalone product – making it the perfect solution for installers seeking to enter the smart home automation market.



RP432KPTZAUA



Up to 200 devices can connect to a RisControl gateway



32 rooms can be added to allocate devices and scenes



128 Automations and Scenes can be added

# MLAA VISITORS



## ABUS INTERNATIONAL VISITORS | MLAA CONFERENCE



*Lucas Eguiravn*



Lucas started his career at ABUS, Spain almost 20 years ago. In 2012 he moved to Germany with his family, where he started his role as Area Sales Manager at the ABUS Pfaffenhain production site, where ABUS develops and produces the range of high security restricted locking systems. Since 2013, he has been supporting LSC in Australia and New Zealand, helping develop the market for high security keying platforms.



*Fabian Mayer*

After successfully graduating with a Master's degree in Sales Engineering and Product Management Fabian worked in the lighting industry on a number of exciting projects in the smart building sector and logistics industries. Fabian joined ABUS in 2021 as a Product Manager for digitalisation projects for their padlocks.



*Christian Jerger*

Christian became part of the ABUS family 2017. He has since worked as an Area Sales Manager for the APAC Region. His role includes finding new Partners and supporting the existing Partners. With LSC approaching our 25 year partnership with ABUS Christian plays an important role in growing the business for ABUS in Australia and New Zealand.



*Sebastian*

Before he started his career at ABUS in 2000, Sebastian spent 1 year abroad, including half a year in Australia. During this time he fell in love with this region and it was already his wish at that time to be able to work in or for this area one day. Sebastian has been with ABUS for over 22 years.



# HAPPY CUSTOMERS



**ELITE LOCKSMITHS QLD (QLD)**

Mark & Kaitlyn from Elite Locksmiths are all smiles with their new Advanced Diagnostics SMART Pro and Silca Rekord S.



**DIAMOND LOCKSMITH (WA)**

Michael Wann from Diamond Locksmiths will be using their new Silca Rekord S Pro to cut keys and turn them into radiant Diamond keys!



**LOCK N' ROLL LOCKS (WA)**

Louis Cheetham is happy to pose with his new Silca Flash008. Louis will be singing all around Perth whilst cutting keys on his new machine.



**RIVERINA SAFES & LOCKS (VIC)**

Brandon O'Brien & Erin Hazell were happy to have a photo taken with the new addition to their workshop – the Silca Unocode F900.



**ASM LOCKSMITHS & ALARMS (NSW)**

Here is Paul Day from ASM Locksmiths & Alarms in NSW showing off their new Silca Unocode F800. That BRAVA beanie looks good too!



**JOHN BARNES LOCKSMITHS (QLD)**

Here is a great group photo of the team from John Barnes Locksmiths. 1st and 2nd year apprentices Martin, Ryan, Brock & Rylen are happy to have a pic taken with their new addition to their workshop – a Silca Futura Pro.



# FOOTY FINALS FEVER!

**GRAB YOUR TEAM KEYS FROM LSC!**

## TERMS & CONDITIONS

Product features and pricing in this newsletter are subject to change without notice. Special promotional prices advertised here are for the month the newsletter has been published. However, some offers may commence on or extend beyond the promotional period. Most products have been photographed in-house and are identical to what you will receive. Information presented in this newsletter has been checked and is believed to be correct at the time of printing, however, errors and omissions may occur. LSC can not guarantee prices, specifications, or features of products that may change after printing.